

Appendix F
Human Environment
Supporting Information

Community Facilities and Services

**Activity Centers
(See Figure 4. Major Activity Centers)**

Activity Center	Type of Business/Activity	Location	Approximate Size	Proximity to Project
Aronoff Center	arts & culture	Walnut between 6th Street & 7 th Street	0.75 square block	on alignment
Art Academy of Cincinnati	education	12th & Walnut Streets	0.25 square block	on alignment
The Banks	mixed use residential/ commercial	2nd Streets between Walnut & Vine streets	2 square blocks	on alignment
Brewery District	mixed use residential/ commercial	McMicken between Vine Street and Central Parkway	4 square blocks	on alignment
The Christ Hospital	medical	Auburn & Mason	1 square block	2 blocks
Cincinnati Shakespeare Theatre	arts & culture	Race Street between 7 th Street & Garfield	0.2 square block	2 blocks
Cincinnati Children's Medical Center	medical	Burnet & Erkenbrecher	4 square blocks	12 blocks
Cincinnati Zoo	park	Vine Street & Erkenbrecher	Approximately 8 square blocks	10 blocks
City Hall	government	Plum between 8th Street & 9 th Street	1 square block	4 blocks
Clifton Heights Business District	retail	Calhoun & McMillan at Clifton	4 blocks	2 blocks
Contemporary Arts Center	arts & culture	6th Street & Walnut	0.2 square block	on alignment
Court Street Market	retail	Court Street between Walnut & Vine Streets	1 square block	on alignment
Deaconess Hospital	medical	Clifton & Straight	1 square block	7 blocks
Duke Energy Center	convention center	5th Street between Elm & Central	2 square blocks	3 blocks
Ensemble Theatre	arts & culture	Vine between Central Parkway & 12 th Street	0.2 square block	0.5 block
Federal Building	government	Main between 5th & 6 th Streets	0.5 square block	on alignment
Federal Reserve	government	4th & Main Streets	0.25 square block	on alignment
Findlay Market	retail	Findlay between Race & Elm Streets	1 square block	on alignment
Fountain Square	park	5th & Vine Streets	0.75 square block	on alignment
Freestore Foodbank	social services	Liberty & Walnut	0.2 square block	1 block
Gateway Quarter	mixed use residential/ commercial	Vine between Central Parkway & 14 th Street	4 square blocks	on alignment

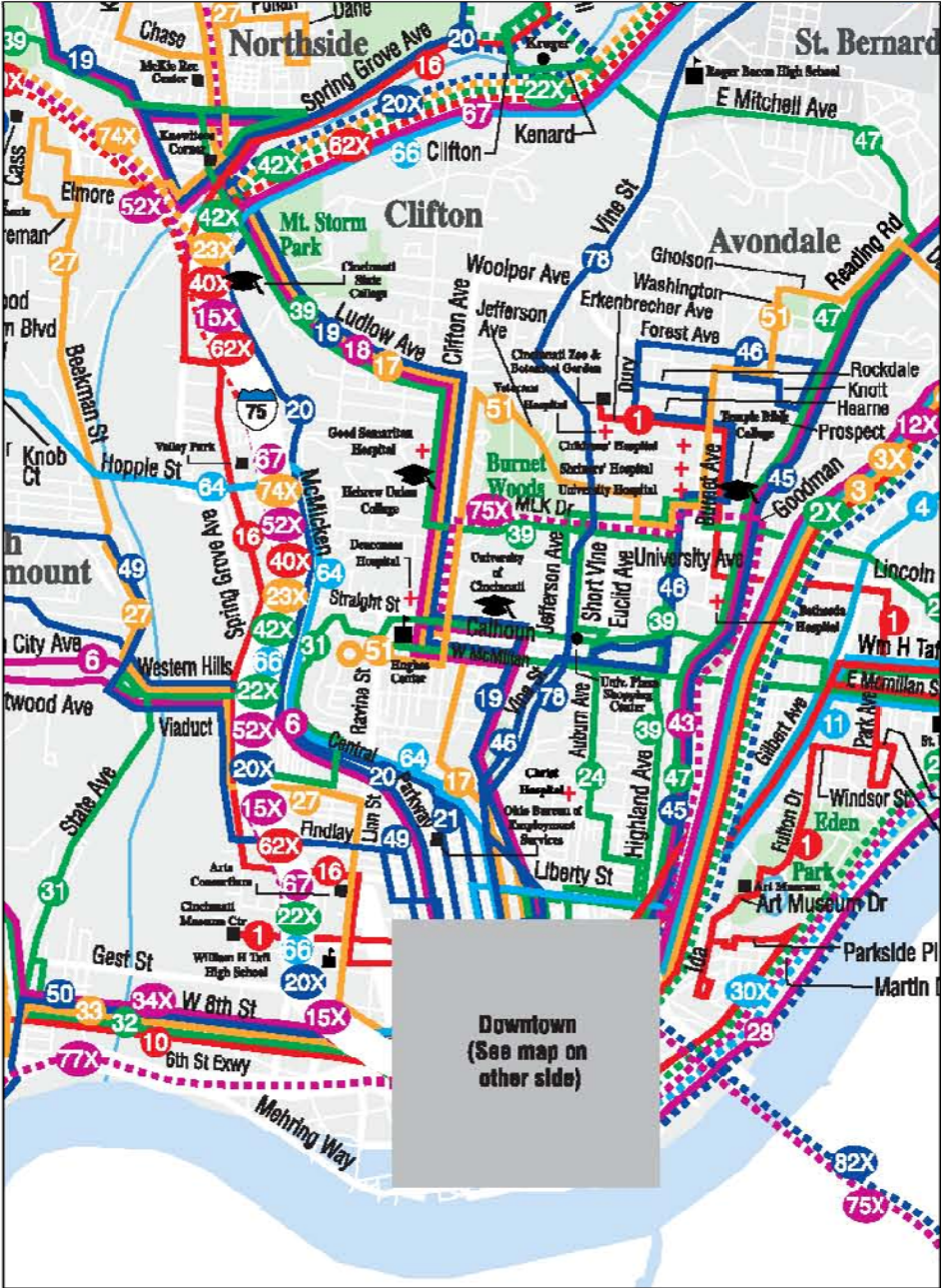
**Activity Centers
(See Figure 4. Major Activity Centers)**

Activity Center	Type of Business/Activity	Location	Approximate Size	Proximity to Project
Good Samaritan Hospital	medical	Clifton & Dixmyth	2 square blocks	12 blocks
Government Square	transit facility	5th Street between Walnut & Main	400 feet	on alignment
Great American Ball Park	sports & recreation	2nd Street & Main	4 square blocks	on alignment
Hamilton County Administration Building	government	Main Street & Court Street	0.25 square block	on alignment
Hamilton County Courthouse	government	Main Street & Central Parkway	0.5 square block	on alignment
Health Alliance	medical	Reading & Oak	0.25 square block	12 blocks
Holmes Hospital	medical	Eden & Sabin	0.5 square block	8 blocks
Hoxworth Blood Center	medical	MLK & Eden	0.25 square block	7 blocks
Inwood Park	park	Vine between Central Parkway & 14 th Street		on alignment
Job & Family Services	social services	Central Parkway & Main Street	0.5 square block	on alignment
Macy's	retail	5th Street between Vine & Race	0.5 square block	1 block
Memorial Hall	arts & culture	Elm near 12 th Street	0.2 square block	on alignment
Music Hall	arts & culture	Elm & 14 th Street	1 square block	on alignment
National Underground Railroad Freedom Center	arts & culture	2nd Street & Walnut Street	1 square block	on alignment
Paul Brown Stadium	sports & recreation	2nd Street & Elm Street	4 square blocks	3 blocks
Public Library (Main Branch)	arts & culture	Walnut between 8 th Street & 9 th Street	1.5 square blocks	on alignment
Reds Hall of Fame and Museum	sports & recreation	Main & Freedom	0.2 square block	on alignment
Riverfront Transit Center	transit facility	2nd Street between Central & Broadway	2,800 feet	on alignment
Rothenberg School	education	Vine & Mulberry	0.5 square block	on alignment
Saks Fifth Avenue	retail	5th Street & Race	0.25 square block	2 blocks
School for the Creative & Performing Arts	education	Central Parkway & Race	1 square block	on alignment
Short Vine Business District	retail	Vine between Corry & University	3 blocks	on alignment
Shriner's Hospital	medical	Burnet & Goodman	0.5 square block	12 blocks
University of Cincinnati	education	Vine & Jeff. Between Calhoun & MLK	Approximately 20 square blocks	on alignment

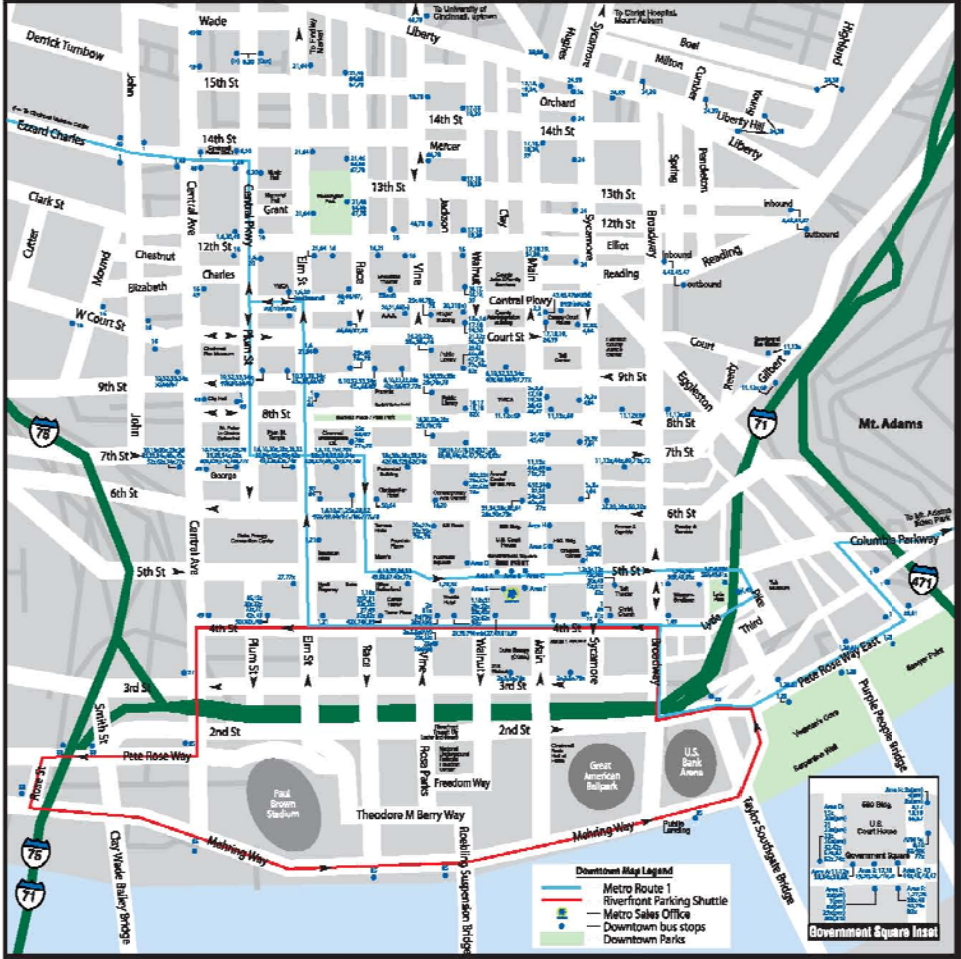
**Activity Centers
(See Figure 4. Major Activity Centers)**

Activity Center	Type of Business/Activity	Location	Approximate Size	Proximity to Project
Taft Museum of Art	arts & culture	4th Street & Pike	0.5 square block	4 blocks
Taft Theatre	arts & culture	5th Street & Sycamore	0.25 square block	1 block
Tri-Health, Inc.	medical	Clifton & Dixmyth	0.2 square block	12 blocks
University Plaza	retail	Corry & Vine	1 square block	on alignment
U.S. Bank Arena	sports & recreation	Broadway & Pete Rose Way	1 square block	2 blocks
UC Academic Health Center	medical	Eden & Sabin	0.5 square block	8 blocks
U.S. Courthouse	government	5th Street between Walnut Street & Main Street	0.5 square block	on alignment
University Medical Center	medical	MLK & Eden Drive	1 square block	9 blocks
Uptown Arts Center	arts & culture	Walnut & Liberty	0.2 square block	2.5 blocks
VA Medical Center	medical	Vine Street & Goodman	0.5 block	7 blocks
Washington Park	park	Race & Elm between 12th Street & 14 th Street	2 square blocks	on alignment
YMCA	sports & recreation	Central Parkway & Elm Street	0.25 square block	on alignment
YWCA	sports & recreation	Walnut & 9 th Streets	0.25 square block	on alignment

METRO Route System (Central City)



METRO System Downtown Route Stops



TANK Southbank Shuttle Routes



Source: Transit Authority of Northern Kentucky, 2010

Community Facilities in Adjacent Neighborhoods
 (See Figure 11. Neighborhoods and Community Facilities)

Facility Type	Name	Figure Key Number
Institutions	Public Library of Cincinnati and Hamilton County	27
	Lloyd Library and Museum	28
	Board of Education	59
	School Services	60
Schools	St Joseph	41
	God's Bible School	43
	Montessori Learning Center	20
	Martin Luther King Jr. Elementary Academy	44
	Bloom	45
	Heberle	47
	Hays – Porter School	48/61
	Queen City Vocation Center	49
	Old Sands	50
	SCPA (previous location)	51
	Taft Hight	52
	Washburn	53
	Taft Elementary	58
	Police/Fire	Fire House - Company 29, Ladder 29
FIRI Cincinnati Fire Department		33
Cincinnati Fire Department		34
MPRS/MPRT Cincinnati Prosecutor		29
Parks/Recreation	Park at Derrick Turnbow and Linn Street	35
	Dyer Park	36
	Lincoln Community Center	37
	Queensgate Playground & Ballfields	38
Churches	York Street United Methodist Church	1
	Plum Street Temple	2
	St Peter in Chains Cathedral	3
	Jarriel Baptist Church	4
Day Care Services	Corner Head Start	5
	West End Children's Room	6
	Learning Steps Academy	7
	Discovery World Day Care	8
	Seven Hills/Gateway Child Development Center	10
	Parent/Child Center - Homeless Program, Over-the-Rhine	12
	Visions/T.C. Child Care & Teen Support Center	13
	Memorial Child Care Center	16
	Center for Family Development - Uptown Towers	17
	YMCA Child Care at Sands Montessori School	18
	Memorial Child Care #2 (Salem Campus)	21

Source: Cincinnati Area Geographic Information System, 2009

Community Facilities Within and Adjacent to Study Area
(See Figure 16. Neighborhoods and Community Facilities)

Facility Type	Name	Location	Figure ID
Institutions	Cincinnati Public Library - Main Branch	800 Vine Street	62
	Cincinnati Public Library – Corryville Branch north of study area in Uptown	2802 Vine Street	63
	YWCA	898 Walnut Street	64
	YMCA	1105 Elm Street	65
Post Offices	Downtown/Queen City Branch	525 Vine Street	66
Schools	School for Creative and Performing Arts	1223 Central Parkway	67
	Rothenberg Preparatory School	2120 Vine Street	57
	Art Academy of Cincinnati	1212 Jackson Street	68
	University of Cincinnati	2600 Clifton Avenue	-
	Hughes Center High School	2515 Clifton Avenue	56
	Cincinnati Hills Christian Academy - Armleder School	140 West 9 th Street	42
	Fairview – Clifton Language School	3689 Clifton Avenue	46
	Corryville Catholic School	108 Calhoun Street	39
St. Francis Seraph	14 East Liberty Street	40	
Police/Fire	Police District 1	310 Ezzard Charles Drive	30
	Police District 5	1012 Ludlow Avenue	
	Fire Company 14 (Headquarters)	430 Central Avenue	23
	Fire Company 3 (District 1)	386 E 9 th Street	69
	Fire Company 5 (District 1)	8 E McMicken Street	70
	Fire Company 19 (District 1)	2846 Vine Street	71
	Records/CIS Cincinnati PD		31
	Traffic Cincinnati PD		32
Parks/Recreation	Washington Park	12 th Street between Elm and Race streets	55
	Inwood Park	2308 Vine Street	-
	Bellevue Hill Park	2191 Ohio Ave	-
	Over-the-Rhine Recreation Center	1715 Republic Street	72
	Central Riverfront Park (construction in progress)	Mehring Way between Elm and Main streets	73
Churches	St. Louis Church	29 E 8 th Street	74
	Archdiocese of Cincinnati	100 E 8 th Street	75
	First Lutheran Church	1208 Race Street	76
	Nast-Trinity Methodist Church	1310 Race Street	77
	New Unity Church of God	1508 Elm Street	78
	Prince of Peace Lutheran Church	1524 Race Street	79
	New Prospect Baptist Church	1829 Elm Street	80
	Philippus United Church	106 W McMicken Avenue	81
	House of Deliverance	1939 Race Street	82
	Nazareth Church of God in Christ	2013 Vine Street	83
	Asbury Tabernacle	11 E McMillan Street	84
	Old St George	42 Calhoun Street	85

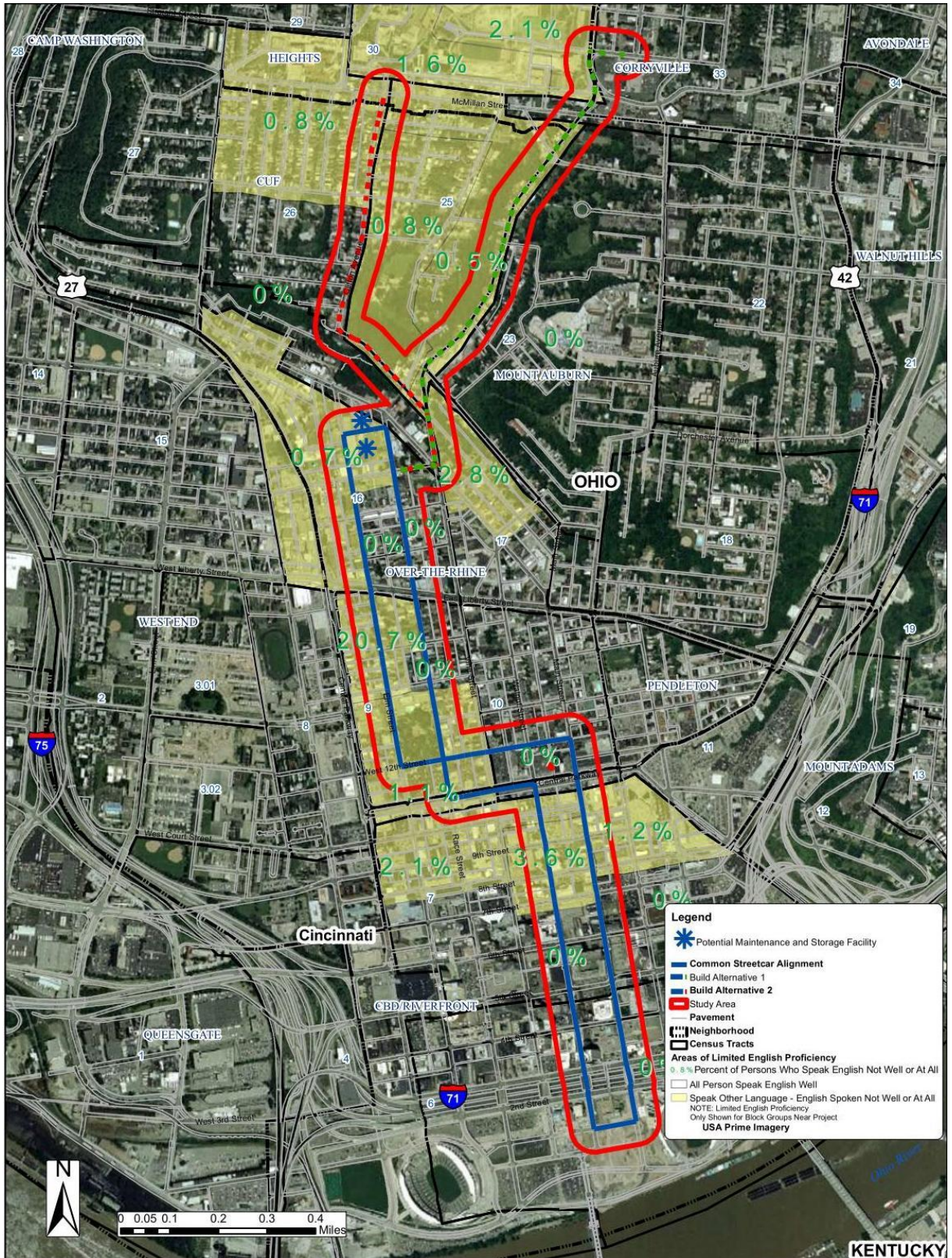
Community Facilities Within and Adjacent to Study Area
 (See Figure 16. Neighborhoods and Community Facilities)

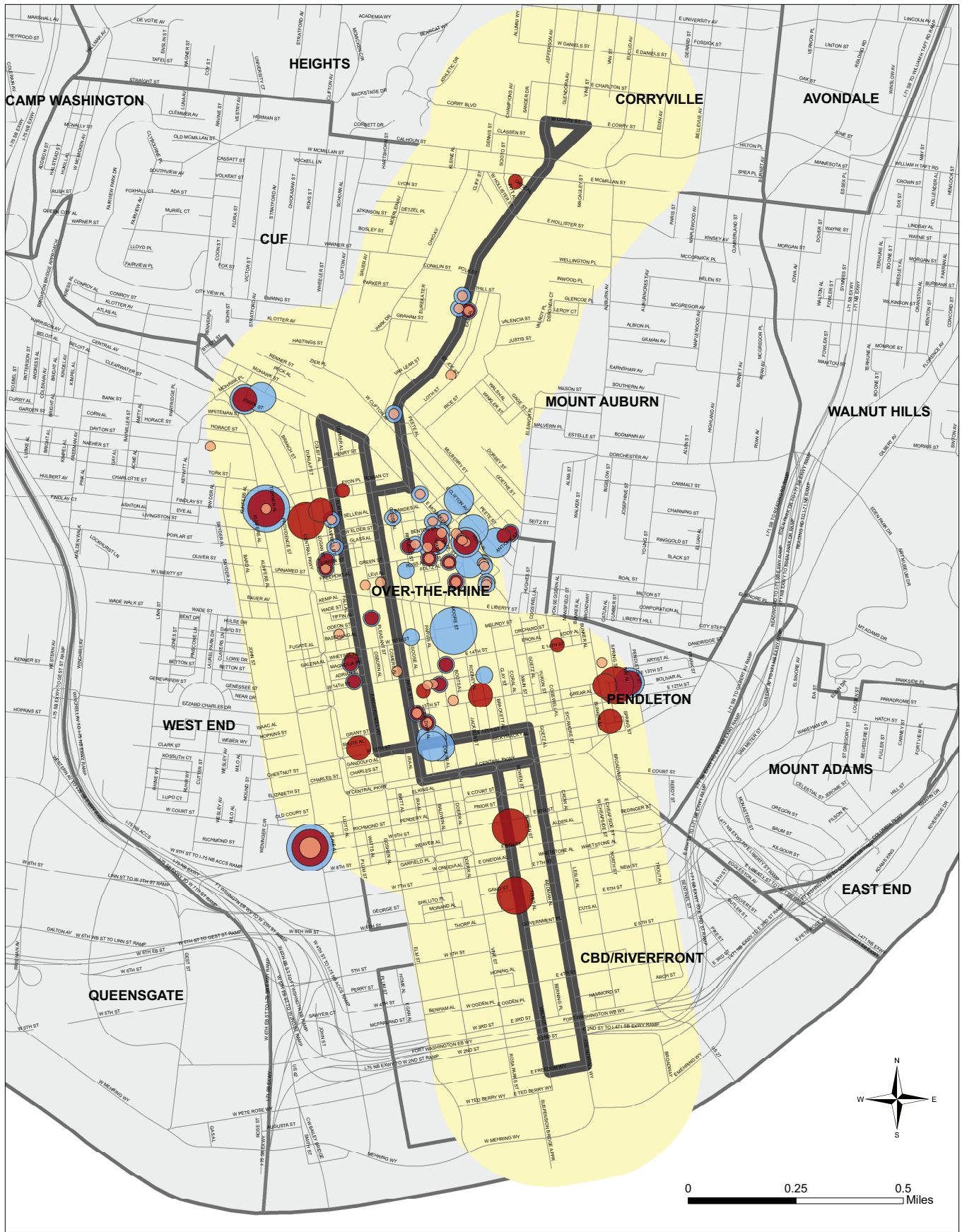
Facility Type	Name	Location	Figure ID
Hospitals (adjacent to study area)	Deaconess Hospital	311 Straight Street	26
	Christ Hospital	2139 Auburn Avenue	25
Government	Hamilton County Courthouse	Main Street and Central Parkway	86
	Hamilton County Family Services	Central Parkway and Main Street	87
Day Care Services	YMCA Christ Child Day Nursery	112 Findlay Street	9
	Emanuel Child Care Center	Race Street	19
	Bright Horizon's Family Solutions, Inc.	550 Main Street	15
	Walnut Corner Children's Center	312 Walnut Street	22
	TLC - A Bright Horizon Center	4 th Street and Elm Street	11
	Lytle Park Child Development Center	300 Lytle Street	14

Source: Cincinnati Area Geographic Information System, 2009

**Environmental Justice
Supporting Data**

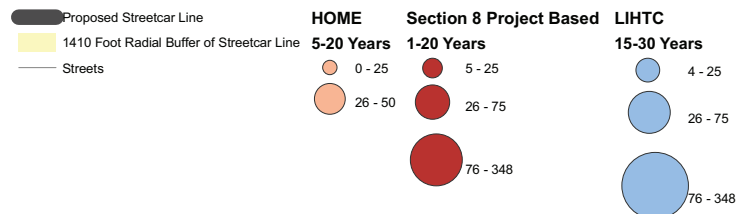
Limited English Proficiency Populations





Income Restricted Housing Units

1410 Foot Radial Buffer of Proposed Streetcar Line



HOME Funded

Address	Description	HOME Units	Affordability end
1622 Logan	Baymiller Estates	4	2021
1624 Moore	Baymiller Estates	2	2021
1627 Moore	Baymiller Estates	1	2021
1627 Walnut	Baymiller Estates	1	2021
1642 Vine	Baymiller Estates	2	2021
2258 Vine	Baymiller Estates	4	2021
1300 Vine	Buddy's Place	20	2009
14 E. McMicken	CHLP I	3	2014
2017 Vine St	CHLP I	3	2014
2265 Vine St	CHLP I	5	2014
2283 Vine St	CHLP I	4	2014
48 E. McMicken	CHLP I	3	2014
124 E. McMicken	CHLP II	1	2017
126 E. McMicken	CHLP II	2	2017
128 E. McMicken	CHLP II	1	2017
143 E. McMicken	CHLP II	1	2017
145 E. McMicken	CHLP II	1	2017
1731 Elm	CHLP II	7	2017
1815 Elm	CHLP II	2	2017
1817 Elm	CHLP II	2	2017
22 W. Elder	CHLP II	7	2017
43 E. McMicken	CHLP II	1	2017
1320 Republic	Community Manor	1	2019
1322 Republic	Community Manor	1	2019
1318 Broadway	Cutter Street Apts	25	2013
400 W. Ninth	Gateway Plaza	50	2019
215 Odeon St	Jimmy Heath House	25	2025
1704 Vine	Magnolia Heights	8	2022
1713 Vine	Magnolia Heights	3	2022
1405 Race	OTR Revitalization	1	2020
1615 Race	OTR Revitalization	2	2020
322 Findlay	OTR Revitalization	2	2020
1609 Pleasant	Pendleton Estates	3	2021
19 Back	Pendleton Estates	4	2021
2155 Loth	Pendleton Estates	2	2021
1223 Republic	Washington Park Estates	5	2020
31 W 13th	Washington Park Estates	6	2020
1705 Lang	Wesley Estates	2	2021
70 E. McMicken	Wesley Estates	2	2021
72 E. McMicken	Wesley Estates	2	2021
76 E. McMicken	Wesley Estates	2	2021
80 E. McMicken	Wesley Estates	4	2021
439 Dayton		6	2021
Total		227	

LIHTC Units

Address	Description	Units	Affordability end
1622 Logan	Baymiller Estates	5	2021
1624 Moore	Baymiller Estates	5	2021
1627 Moore	Baymiller Estates	5	2021
1627 Walnut	Baymiller Estates	6	2021
1642 Vine	Baymiller Estates	5	2021
2258 Vine	Baymiller Estates	5	2021
14 E. McMicken	CHLP I / Cincinnati I	5	2013
2017 Vine St	CHLP I / Cincinnati I	5	2013
2265 Vine St	CHLP I / Cincinnati I	5	2013
2283 Vine St	CHLP I / Cincinnati I	5	2013
48 E. McMicken	CHLP I / Cincinnati I	5	2013
59 E. McMicken	CHLP I / Cincinnati I	5	2013
124 E. McMicken	CHLP II / Renaissance OTR	4	2016
126 E. McMicken	CHLP II / Renaissance OTR	4	2016
128 E. McMicken	CHLP II / Renaissance OTR	5	2016
143 E. McMicken	CHLP II / Renaissance OTR	5	2016
145 E. McMicken	CHLP II / Renaissance OTR	5	2016
1731 Elm	CHLP II / Renaissance OTR	4	2016
1815 Elm	CHLP II / Renaissance OTR	5	2016
1817 Elm	CHLP II / Renaissance OTR	5	2016
22 W. Elder	CHLP II / Renaissance OTR	4	2016
43 E. McMicken	CHLP II / Renaissance OTR	4	2016
1321 VINE ST	Community Apartments	24	2019
122 E CLIFTON AVE	Community Views	13	
429 E 13TH ST	Cutter Apartments	40	2013
15-17 WEST 12TH STREET	Dana Hotel	41	
274 STARK ST	Fairview Estates	28	2021
115 E MCMICKEN	Franciscan Homes IV	35	
400 W 9TH ST	Gateway Plaza	348	2022
24 WEST 12TH STREET	Harkavy Hall	30	2024
1344 Vine	Magnolia Heights	10	2023
1537 Pleasant	Magnolia Heights	9	2023
1700 Logan	Magnolia Heights	10	2023
1704 Logan	Magnolia Heights	10	2023
1704 Vine	Magnolia Heights	10	2023
1710 Republic	Magnolia Heights	9	2023
1713 Vine	Magnolia Heights	10	2023
208 W. 14th	Magnolia Heights	10	2023
210 Magnolia	Magnolia Heights	10	2023
217 Mulberry	Magnolia Heights	10	2023
259 W MCMICKEN AVE	McMicken Manor	27	
216 E CLIFTON AVE	North Rhine	52	2022
322 FINDLAY ST	OTR Revitalization	94	2019
7 BACK ST	Pendleton Estates	42	2021
1631 REPUBLIC	Saint Anthony Village	22	2017
114 E CLIFTON AVE	Sharp Village	36	2012
145 E CLIFTON AVE	Sharp Village Annex	40	2015
27 W 12TH ST	Tender Mercies	39	2013
1223 Republic	Washington Park Estates	19	2020
31 W 13TH ST	Washington Park Estates	18	2020
1705 LANG ST	Wesley Estates	29	2020
1324 WALNUT ST		5	
1501 REPUBLIC ST.		25	
19 E 15TH ST		115	
Total		1326	

Project Based S8

Address	Descr	Units	Affordability end
1622 Logan	Baymiller Estates	5	2026
1624 Moore	Baymiller Estates	5	2026
1627 Moore	Baymiller Estates	5	2026
1627 Walnut	Baymiller Estates	6	2026
1642 Vine	Baymiller Estates	5	2026
2258 Vine	Baymiller Estates	5	2026
1108 BROADWAY ST	Broadway Apartments	29	2011
128 FINDLAY ST	Carl Apartments	16	2025
1321 Vine	Community Manor	19	2026
400 W 9TH ST	Gateway Plaza	348	2028
1400 SYCAMORE ST	Holub Apartments / Sycamore Manor	8	2010
1303 WALNUT ST	Jan Apartments	66	2011
208 MAGNOLIA STREET	Magnolia Apartments	6	2010
1344 Vine	Magnolia Heights	10	2029
1537 Pleasant	Magnolia Heights	9	2029
1700 Logan	Magnolia Heights	10	2029
1704 Logan	Magnolia Heights	10	2029
1710 Republic	Magnolia Heights	9	2029
208 W. 14th	Magnolia Heights	10	2029
210 Magnolia	Magnolia Heights	10	2029
217 Mulberry	Magnolia Heights	10	2029
19 W MCMILLAN ST	Hollister House	24	2014
274 STARK ST	Fairview Estates	28	2026
429 E. 13th	Cutter Apartments	40	2012
322 Findlay Street	OTR Revitalization	94	2027
609 WALNUT ST	Metropole Apartments	230	2010
1674 CENTRAL PKY	Parkway Towers	100	2022
7 BACK ST	Pendleton Estates	42	2026
415 E 13TH ST	Pendleton III	78	2011
214 PEETE ST.	Renaissance OTR	5	2010
1827 CAMPBELL ST	Rhine Main Apartments	28	2010
1218 BROADWAY ST	Rhonda Manor	39	2011
1317 REPUBLIC ST	Saints Rest #2	12	2010
216 WEST 12TH ST.	Senate Apartments	35	2011
898 WALNUT ST	Walnut Towers	105	2025
1223 Republic	Washington Park Estates	18	2024
31 W 13TH ST	Washington Park Estates	19	2024
1705 LANG ST	Wesley Estates	29	2021
Total		1522	

Data notes

Affordable housing near street car

Data notes

- A single unit may be listed as any combination of HOME, LIHTC, and Project Based Section 8
- HOME-*funded* units are shown rather than the *total* number of project units made possible by HOME funding (e.g., HOME may provide funding to make a 50 unit project possible, but only 11 of the units are considered “HOME funded” and require HOME program monitoring)
- Where multiple addresses are listed for a single LIHTC or Section 8 project, the per-building unit numbers are estimated although the sum total of these units is accurate (this is because existing databases list only one address for scattered-site housing). For HOME units, the numbers are precise based on internal files.
- Sources
 - Ohio Preservation Compact (<http://ohiopreservationcompact.org>)
 - HUD database (<http://www.hud.gov/offices/hsg/mfh/exp/mfhdiscl.cfm>)
 - Over-the-Rhine Community Housing (<http://www.otrch.org/>)
 - Internal Files

Figure 1-A. Parking Impacts in Relation to Environmental Justice Areas

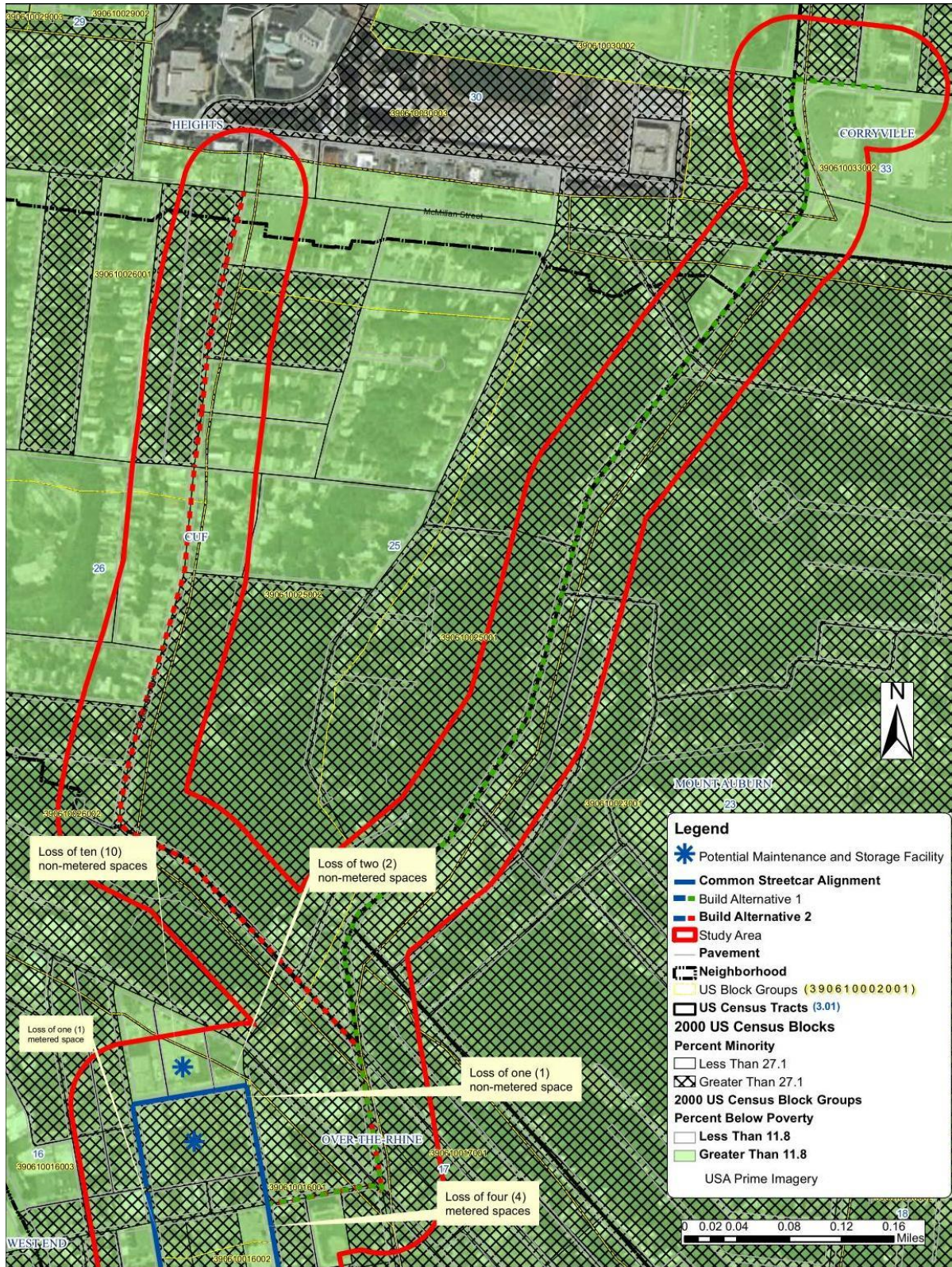


Figure 1-B. Parking Impacts in Relation to Environmental Justice Areas

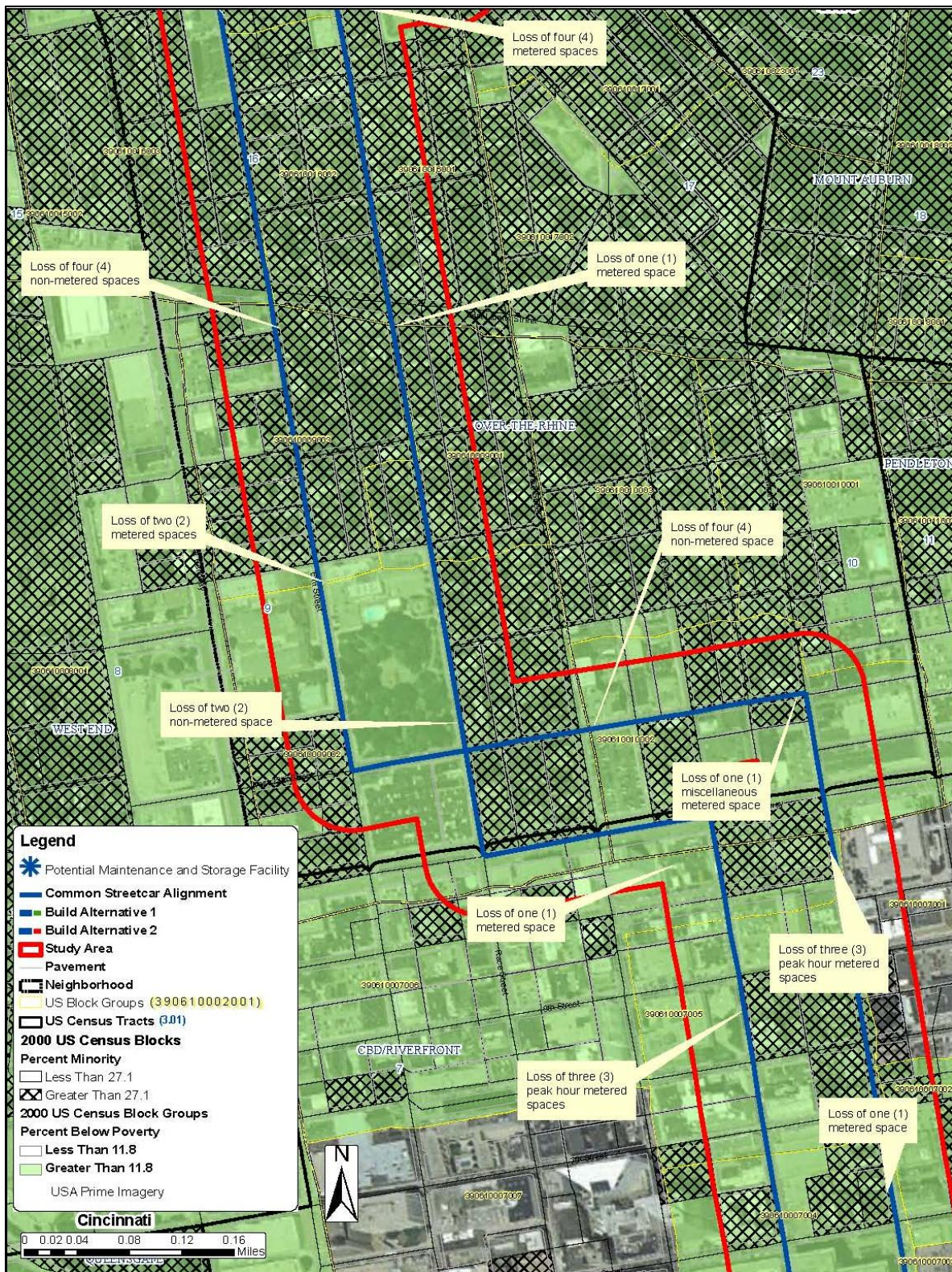


Figure1-C. Parking Impacts in Relation to Environmental Justice Areas

