

West End Speaks Update

a quality-of-life plan for the future of the West End

Kick-Off Meeting | July 27, 2021

West End Speaks | 2016



West End Speaks

a quality-of-life plan for the
future of the West End

October 19, 2016

- Community-led plan that serves as a roadmap for becoming a healthier, safer, and economically stronger neighborhood
- Work Teams led process made up of residents and community partners (including those who work and worship in community)
- Supported by stakeholders, key partners
- Led by West End Community Council, Seven Hills Neighborhood Houses; Facilitated by the Community Building Institute (CBI) at Xavier University.
- Approved by City of Cincinnati Planning Commission and City Council in Fall of 2016

West End Speaks | Plan Theme Areas

BUSINESS

CLEAN

COMMUNITY

EMPLOYMENT

HOUSING

SAFETY

YOUTH AND EDUCATION

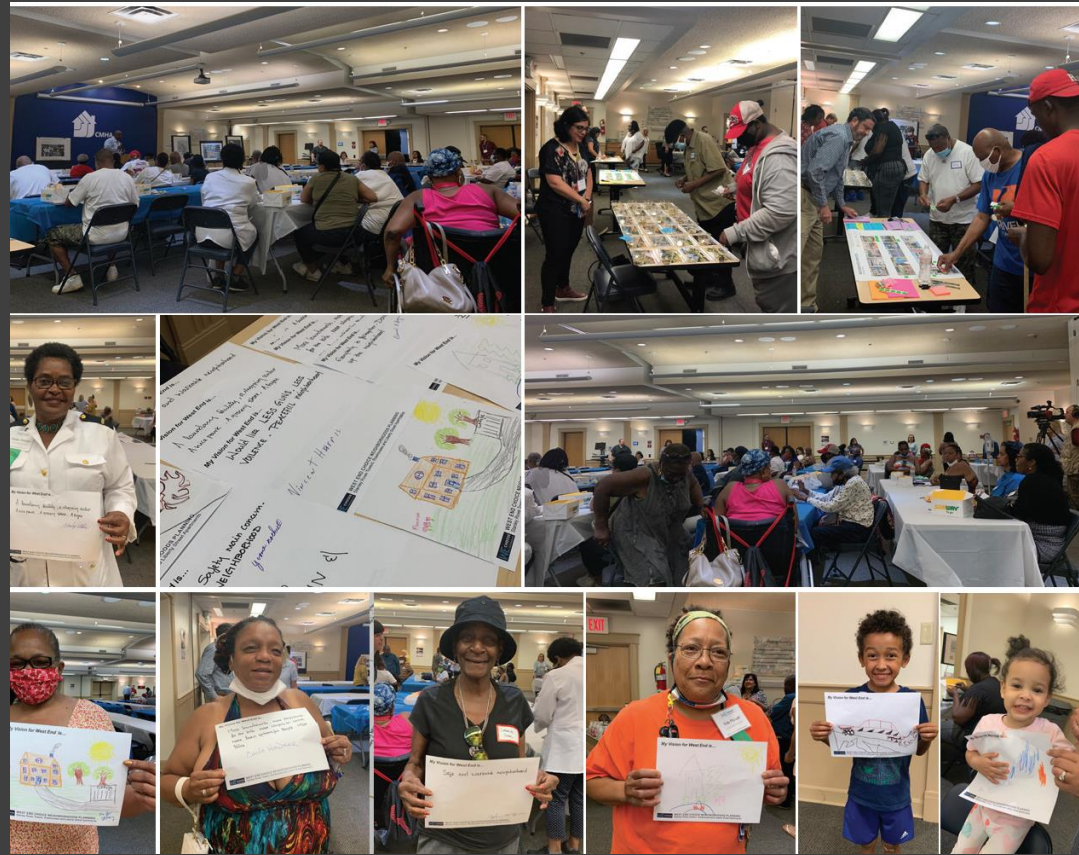
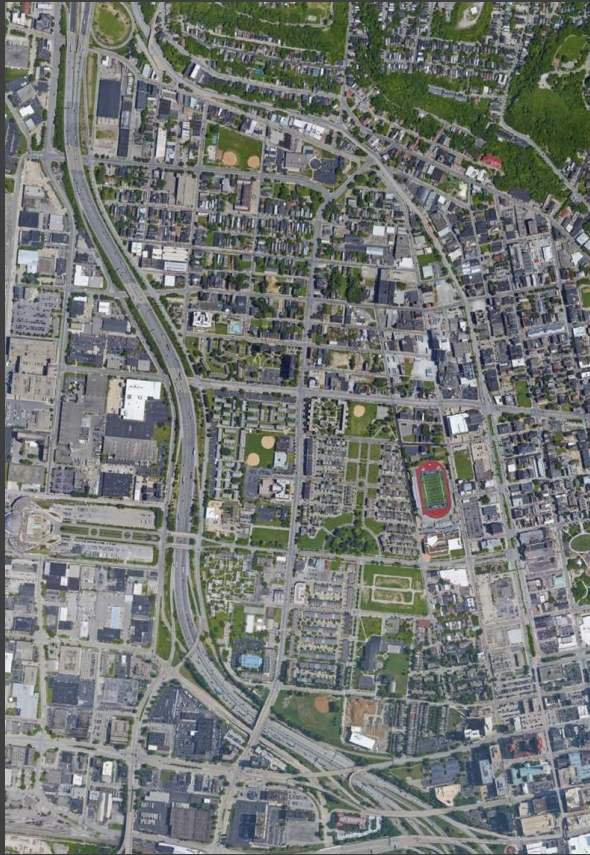
- **West End Speaks identifies 18 goals across 7 theme areas**
- **Goals prioritized by time frames**
 - **Short Term 1 - 3 Years**
 - **Mid Term 3 - 5 Years**
 - **Long Term 5 - 10 Years**
- **Action Steps and Implementation Partners for each goal**

Why We Plan and Why It's Important

- **Allows for a platform for dialogue and engagement**
- **Creates and confirms neighborhood identity, goals, and vision**
- **Helps guide policy decisions that impact the neighborhood**
- **Helps guide future development and investment decisions**
- **Used as a tool for community investment projects**
- **Demonstrates to City leaders that the neighborhood is united**

Why the Need for an Update to *WE Speaks*?

- Allows for a platform for dialogue and engagement
- Creates and confirms neighborhood identity, goals, and vision
- Helps guide policy decisions that impact the neighborhood
- Helps guide future development and investment decisions
- Used as a tool for community investment projects
- Demonstrates to City leaders that the neighborhood is united
- Recent developments not foreseen during WE Speaks process
- CBA | Housing Study | Linn Street | Choice Neighborhood Grant



WEST END
Choice Neighborhoods Planning

NEIGHBORHOOD MEETING
07.27.21

Affordable Housing

Empowering People

Neighborhood Assets

WHO

CMHA was awarded a HUD Choice Neighborhood Planning grant in collaboration with Seven Hills Neighborhood House (Anchor Institution), Community Building Institute and other key stakeholders.

WHAT

Choice Neighborhoods is HUD's signature program to rebuild neighborhoods, preserve affordable housing and create opportunities for residents.

WHERE

The West End neighborhood bounded by north: W McMicken Ave and Western Hills Viaduct, east: Central Parkway, south: 6th St and Kenner, west: CSX-Norfolk Southern rail lines and I-75. Target public housing sites: Stanley Rowe Towers A/B, Rowhouses, Liberty St Apts.

HOW

The Planning process will result in a Transformation Plan that will become the guiding document for directing positive change in the neighborhood that provides stability and helpful outcomes for West End families.



Stanley Rowe Towers A and B, Rowhouses and Liberty Street Apartments

VISIT westendchoice.org

FOLLOW @WEChoiceCincy

CONTACT choiceneighborhoods@cintimha.com

CHOICE

NEIGHBORHOODS

Signature Place-Based Initiative

HOUSING

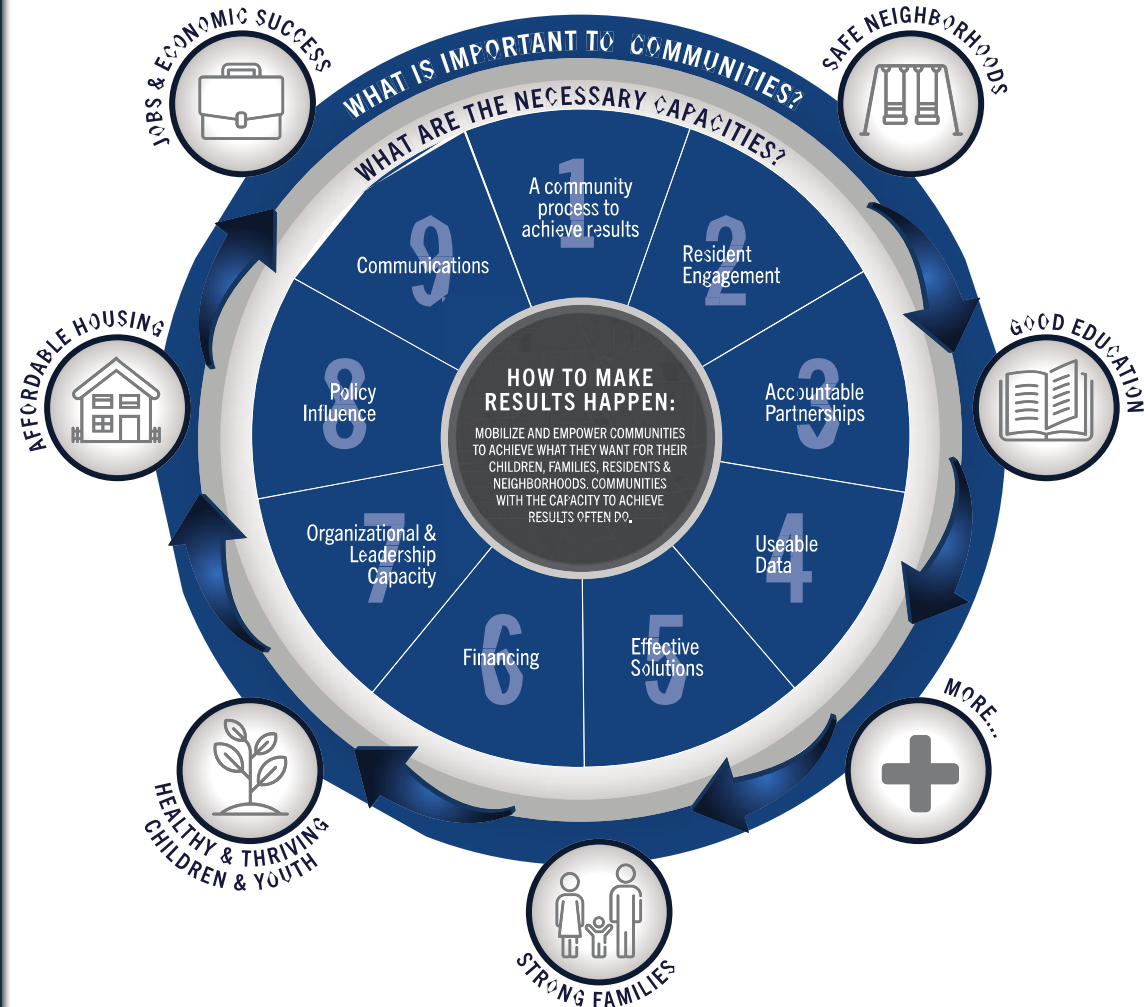
- Transform distressed public housing into a sustainable community that serves the residents and is physically and financially viable over the long term.

PEOPLE

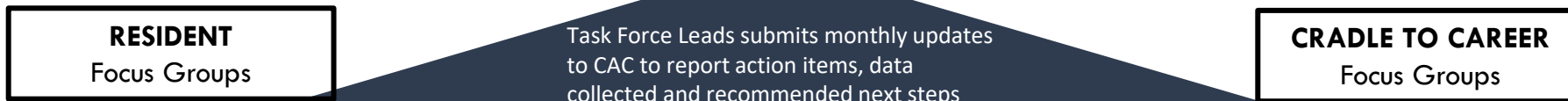
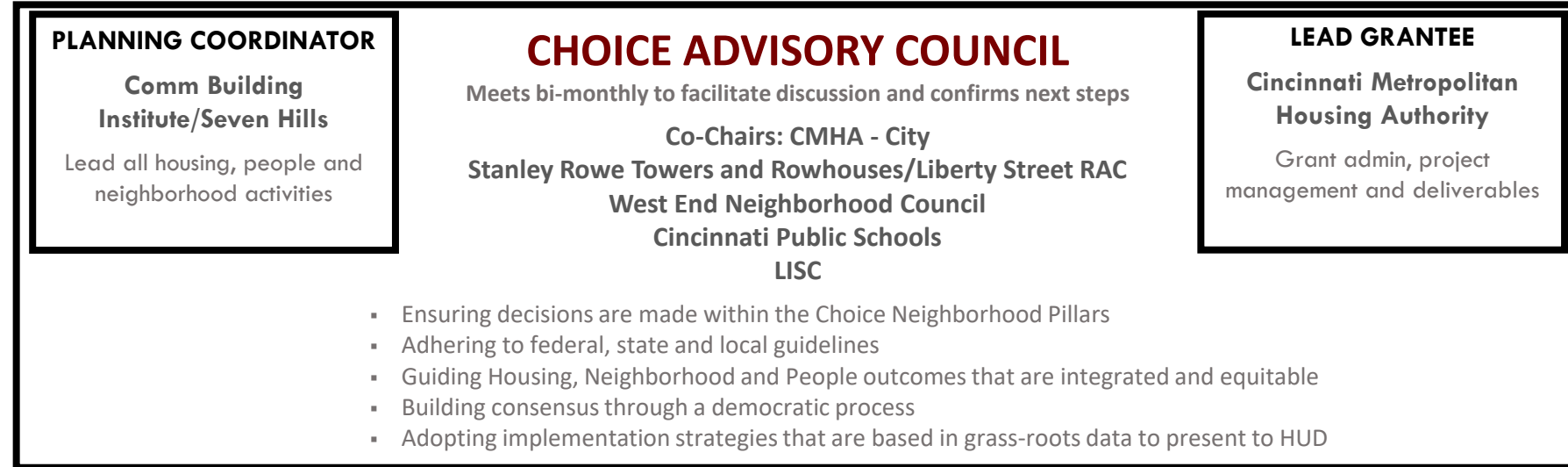
- Prepare students for the challenge of post-secondary education and global competition
 - Provide quality academic instruction and internships with businesses, industries, public/private partners
 - Bridge digital divide

NEIGHBORHOOD

- Attract and effectively deploy capital for critical housing and community development needs
- Plan for sustainable /people-oriented systems and networks
 - Community safety



West End Transformation Planning Team

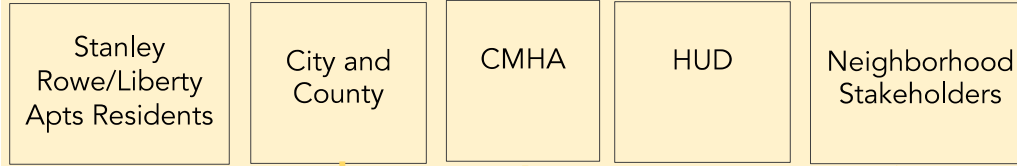


Transformation Plan

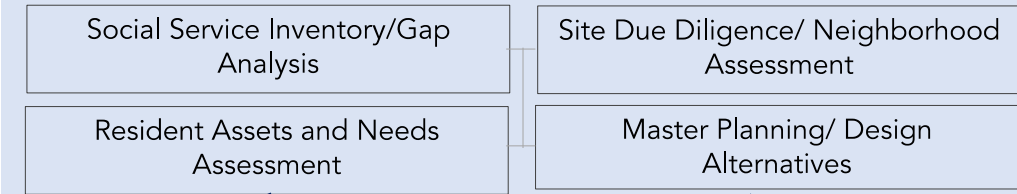
RESIDENT AND COMMUNITY ENGAGEMENT FRAMEWORK



INPUTS



ACTIVITIES



TRANSFORMATION PLAN

Housing Development Strategy

Human Investment Plan

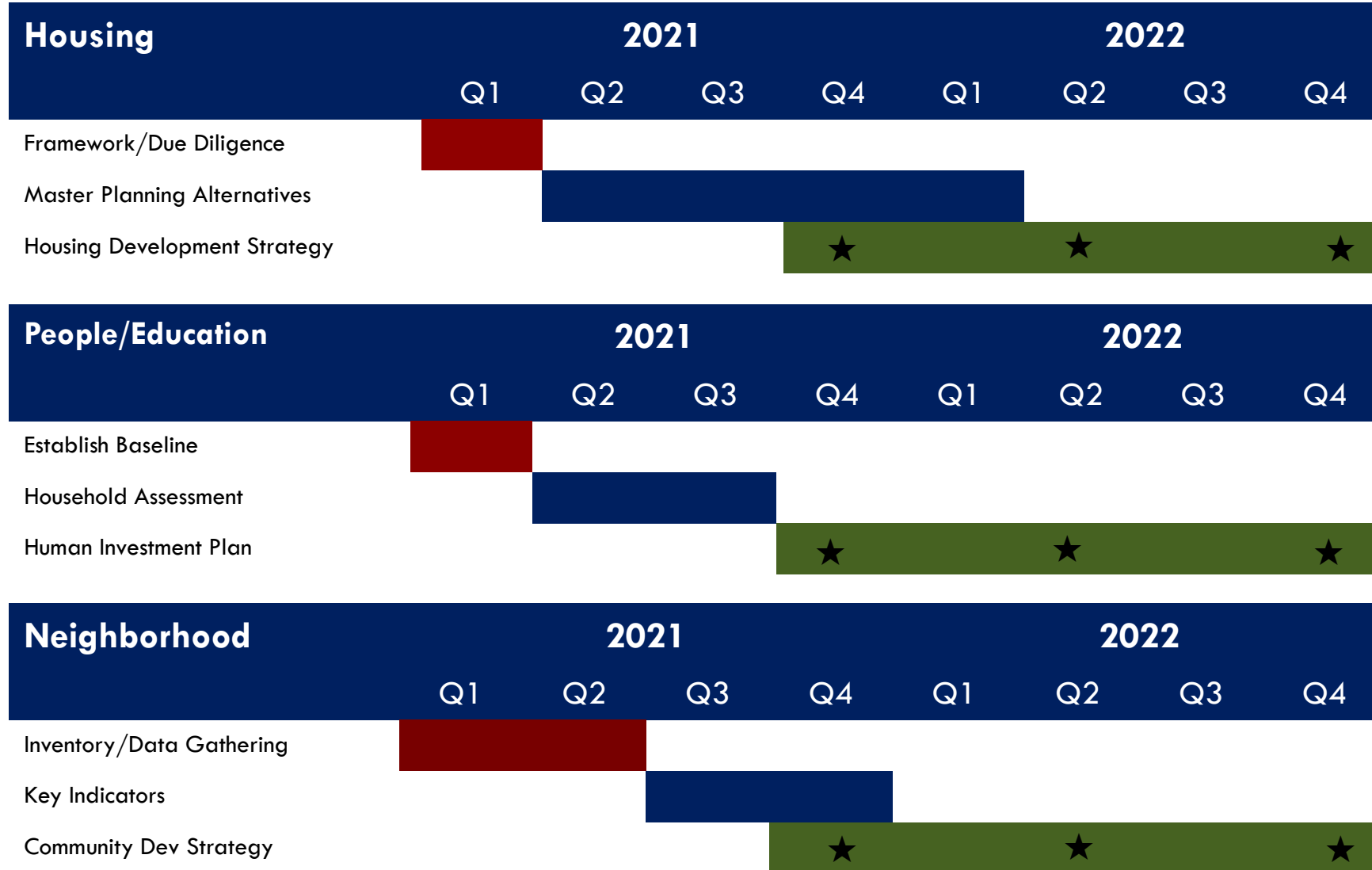
Community Development Strategy

OUTPUTS



OUTCOMES

WEST END Choice Neighborhoods Planning Process



★ Deliverables submitted to HUD

Partners | Resources | Assets

CHOICE ADVISORY COUNCIL

CMHA
 City of Cincinnati
 Hamilton County
 Stanley Rowe Resident Leaders
 Cincinnati Public Schools
 Cincinnati Recreation Commission
 West End Community Council
 Seven Hills Neighborhood Houses
 Greater Cincinnati Foundation
 Cincinnati Development Fund
 USC
 FC Cincinnati

YOUTH/SENIORS/COMMUNITY

Cincinnati Public Schools
 Hays Porter Elementary School
 Taft High School
 Cincinnati College Prep Academy
 Head Start-TMB Learning Center
 Cincinnati Recreation Commission
 Council on Aging
 West End Art Gallery
 West End Library
 St. Vincent de Paul
 Community Action Agency

HEALTH/ WELLNESS

Cincinnati Recreation Center
 Freestore Foodbank
 CityLink
 Carl H. Lindner YMCA
 WinMed Health Services

BUSINESS/WORKFORCE DEVELOPMENT

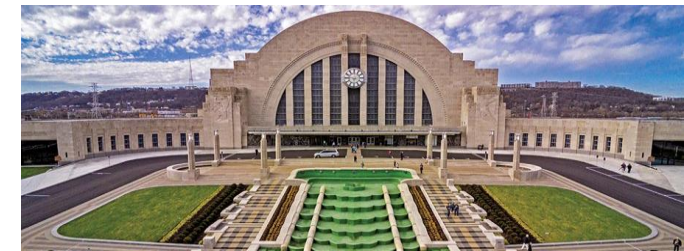
Chamber of Commerce
 MORTAR
 West End Business Alliance
 Cincinnati Works
 Cincinnati Job Corps
 Jobs and Family

HOUSING/ NEIGHBORHOOD

West End Community Council
 Seven Hills Neighborhood Houses
 The Port
 Greater Cincinnati Foundation
 Cincinnati Development Fund
 Cincinnati Metro
 FC Cincinnati
 City West Homeowners Assoc.



Project Lead: Cincinnati Metropolitan Housing Authority (CMHA)
 Planning Coordinator: Community Building Institute/Seven Hills Neighborhood Houses
 Master Planning: Lord Aeck Sargent



Job Centers and Transit Lines

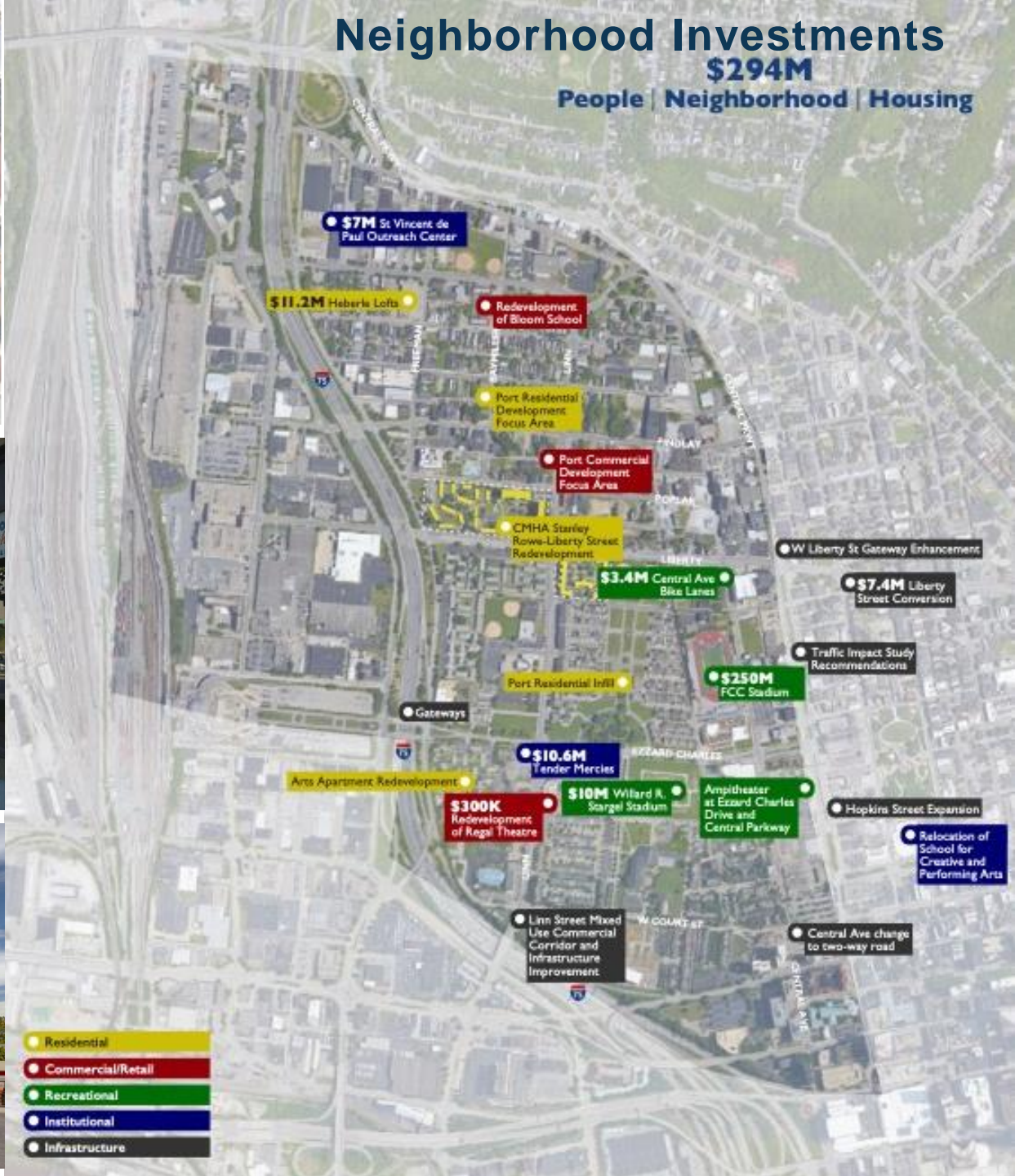




Neighborhood Investments

\$294M

People | Neighborhood | Housing



Choice Housing Principles



Physical Transformation through Mixed-Income and Mixed-Use Development

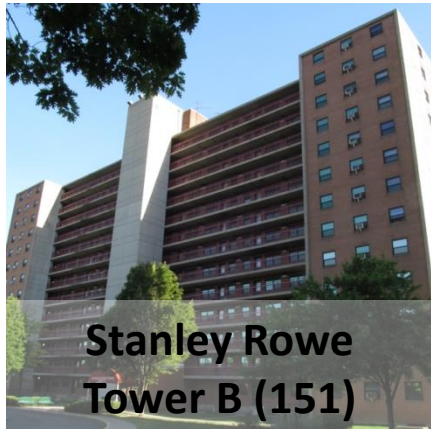
1. **Preservation of affordability** for Stanley Rowe and Liberty Street residents/West End residents
2. **Mix of people** with a range of incomes, ages, ethnicities and abilities
3. **Mix of housing** types, densities, sizes and prices to match a variety of lifestyles with unit designs that are energy efficient and conserve resources and are consistent with Cincinnati's vernacular
4. **High quality design and construction** with no physical distinction between market rate and affordable housing
5. **Mix of uses** including housing, retail, child care, education, job centers, recreation and services
6. **Sustainability** state of the art energy and water conservation
7. **Interconnected streets, community facilities and public open spaces** that foster neighborhood connections and provide multi-modal options



Stanley Rowe Rowhouses (66)



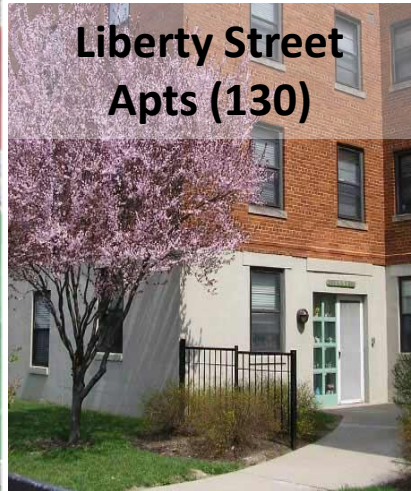
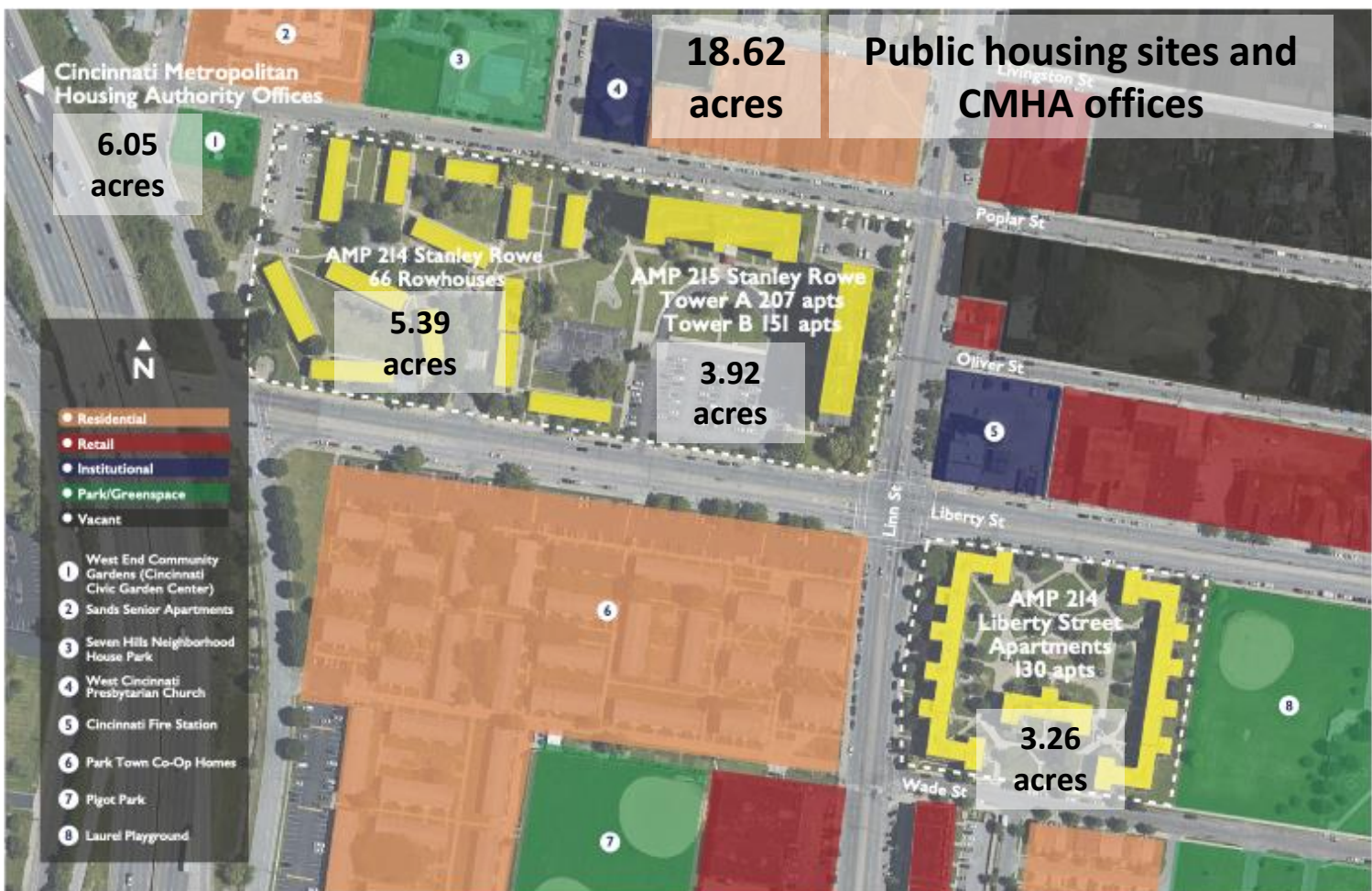
Stanley Rowe Tower A (207)



Stanley Rowe Tower B (151)

Existing Public Housing Sites

554 units
930 Residents



Liberty Street Apts (130)

Community Engagement

WEST END CHOICE NEIGHBORHOOD TRANSFORMATION PLAN

Stanley Rowe Towers A and B/ Rowhouses /Liberty Street Apartments



LIKE

facebook.com/WEChoiceCincy

- Meeting Information
- News and Events
- Links to neighborhood initiatives

VISIT

westendchoice.org

- Choice Neighborhoods Info
- Organizations involved
- Meetings
- Community Presentations
- News and Events
- Links to Partner Sites
- Resources from Partners- jobs, events, food and health programs
- Frequently Asked Questions

CONTACT

choiceneighborhoods@cintimha.com

- Request Information
- Ask Planning Process Questions

Purpose of a Kick-Off Meeting

- Community members meet new people in the neighborhood or re-engage others
- Community members understand the planning process and their role in it
- Community members understand the importance of a neighborhood plan
- Facilitators for Working Groups identified from interested community members
- Contact information gathered and used to share updates and invitations for those interested in Work Team area
- Gather feedback and stories from community members to help inform work team foci, existing conditions, general vision for the neighborhood, etc.

West End Speaks Update | Plan Theme Areas

BUSINESS

Business and Employment

CLEAN

Clean, Open Space, and Recreation

COMMUNITY

Community, Health, and Safety

EMPLOYMENT

Housing

HOUSING

Youth and Education

SAFETY

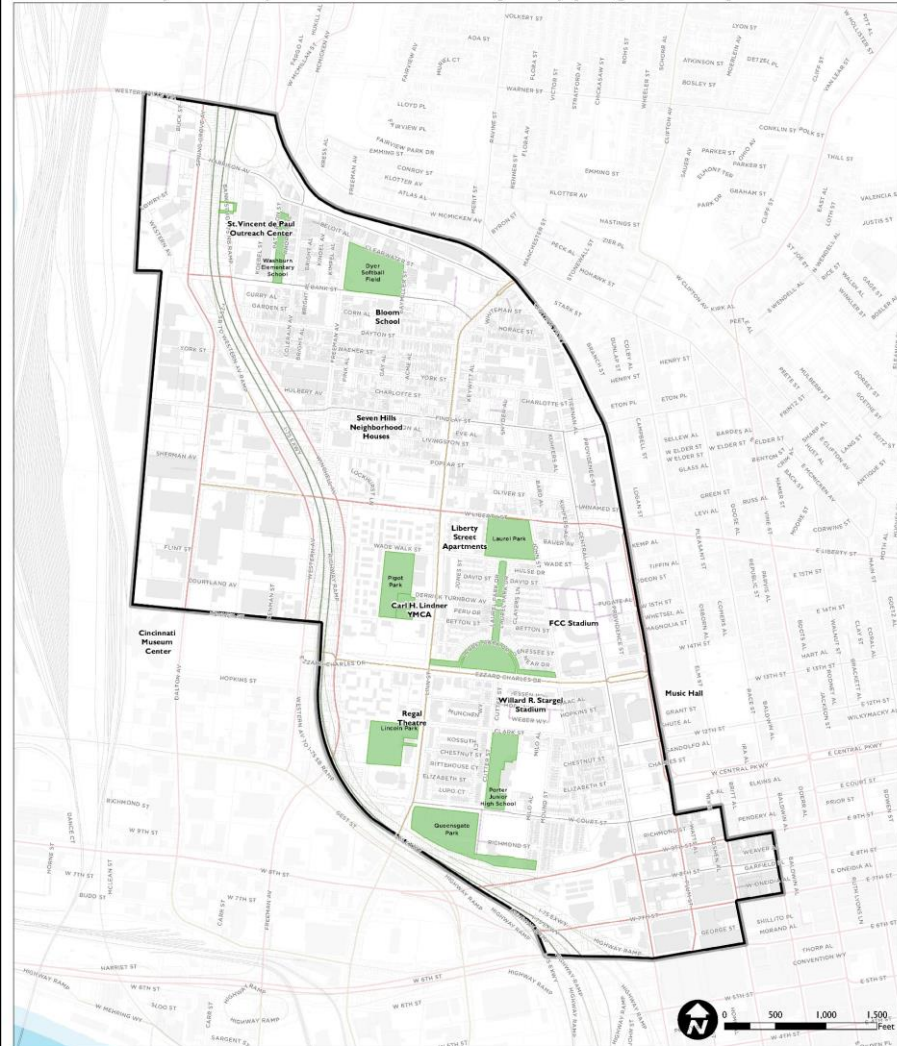
New Theme Areas:

YOUTH AND EDUCATION

- **Senior Living and Services**
- **Transportation & Connections**

Community Mapping Activity | 5:50p – 6:10p

West End Speaks Update | Community Mapping Activity

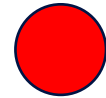


Place dots on the locations of the map based on the following:

- What areas are you most proud of?
- What areas need the most help?
- Where is your place in the community?
- Where is there opportunity?



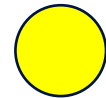
What areas are you most proud of?



What areas need the most help?



Where is your place in the community?
(live, work, worship, etc.)



Where is there opportunity?

Theme and Priorities Activity | 6:15p – 6:50p

BUSINESS AND EMPLOYMENT

**CLEAN, OPEN SPACE, AND
RECREATION**

COMMUNITY, HEALTH, AND SAFETY

HOUSING

SENIOR LIVING AND SERVICES

**TRANSPORTATION AND
CONNECTIONS**

YOUTH AND EDUCATION

EXISTING GOAL PRIORITIZATION AND FEEDBACK

ADDITIONAL GOALS AND THOUGHTS?

EXISTING IDENTIFIED PARTNERS

ADDITIONAL PARTNERS TO HELP IMPLEMENT?

LOCATION MAPS FOR AREAS OF INTEREST

SIGN UP SHEET FOR WORKING GROUP

Kick-Off Meeting | Agenda

~~Introduction & Background~~ ~~5:30p - 5:50p~~

Community Mapping Activity **5:50p - 6:15p**

~~Themes and Priorities Activity~~ ~~6:15p - 6:50p~~

~~Next Steps and Adjourn~~ ~~8:55p - 9:00p~~

Kick-Off Meeting | Agenda

~~Introduction & Background~~ ~~5:30p - 5:50p~~

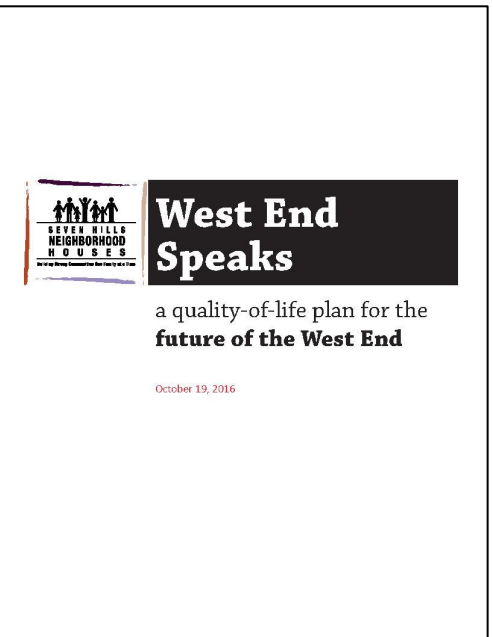
~~Community Mapping Activity~~ ~~5:50p - 6:15p~~

Themes and Priorities Activity **6:15p - 6:50p**

~~Next Steps and Adjourn~~ ~~6:50p - 7:00p~~

West End Speaks Update | Next Steps

- **Feedback and deliverables will be posted to website**
- **Sign-in sheet used for adding to contact list for updates**
- **Date TBD | Working Groups (Community Conversations)**
- **Be on the lookout for updates (be sure you provided contact info)**





City Planning and Engagement / Neighborhood Plans / Ongoing Neighborhood Planning Processes / West End Speaks Plan Update

CITY PLANNING AND ENGAGEMENT MENU

- About City Planning and Engagement ▼
- City Planning and Engagement Calendar
- City Planning Commission
- Community Engagement Meetings ▼
- Maps and Data
- Neighborhood Plans** ▲
- Approved Plans
- Ongoing Neighborhood Planning Processes**
- Plan Cincinnati ▼
- Planning Projects and Studies ▼
- Subdivisions and Lot Splits
- News
- Contact Us

West End Speaks Plan Update

West End Speaks Update | Status Spotlight

A Kick-Off Meeting will be held on **Tuesday, July 27th, 2021** at **Seven Hills Neighborhood Houses (901 Findlay Street)** from **5:30 p.m. to 7:00 p.m.** This meeting will contain opportunities for:

- Residents to show their interest in improving the neighborhood.
- Community members to understand the planning process and their role in it.
- Community members to understand the importance of a neighborhood plan.
- Community members to learn about existing conditions of the neighborhood.
- Gather feedback and stories from community members to help inform work team focus, existing conditions, general vision for the neighborhood, etc.

All West End residents, businesses, a community partners are welcome! We hope to see you there!

Background

West End Speaks Plan is a quality of life plan for the future of the West End approved by the City of Cincinnati in 2016. The

Contact



Andy Juengling, AICP | Senior City Planner

City of Cincinnati Department of City Planning and Engagement

andy.juengling@cincinnati-oh.gov | 513.352.4840

Samantha McLean, AICP | Senior City Planner

City of Cincinnati Department of City Planning and Engagement

samantha.mclean@cincinnati-oh.gov | 513.352.4886