

West Price Hill

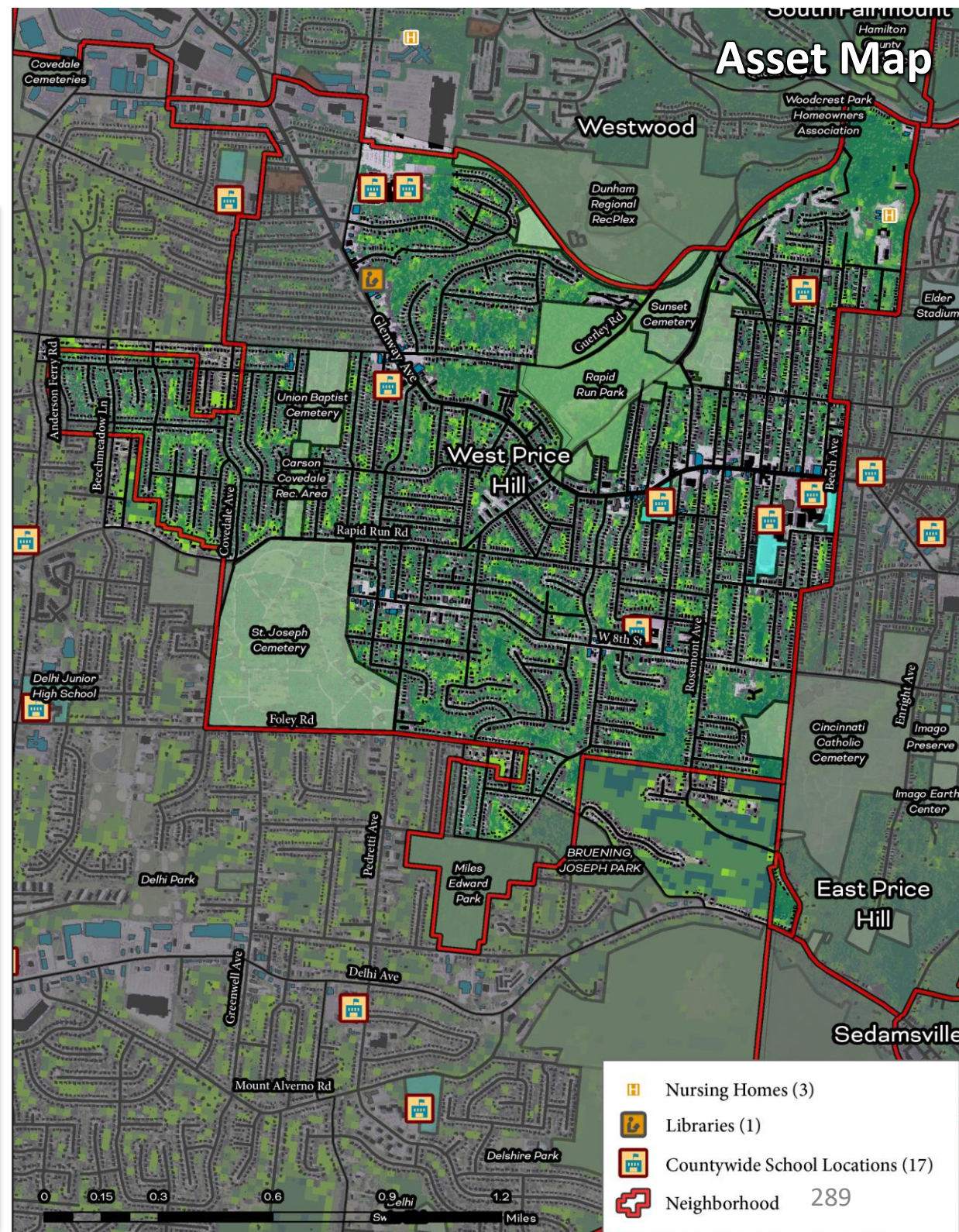
Cincinnati Neighborhood Profile

West Price Hill is a predominantly white neighborhood (61.5%) with 16,220 residents.

The life expectancy for West Price Hill residents is 71.7 (ranks 34th longest for all communities assessed). Disease prevalence is average for all of the communities assessed, including asthma (ranked 27th), cancer (ranked 29th), diabetes (ranked 21st), high blood pressure (ranked 21st), heart disease (ranked 25th), kidney disease (ranked 23rd), and obesity (ranked 25th).

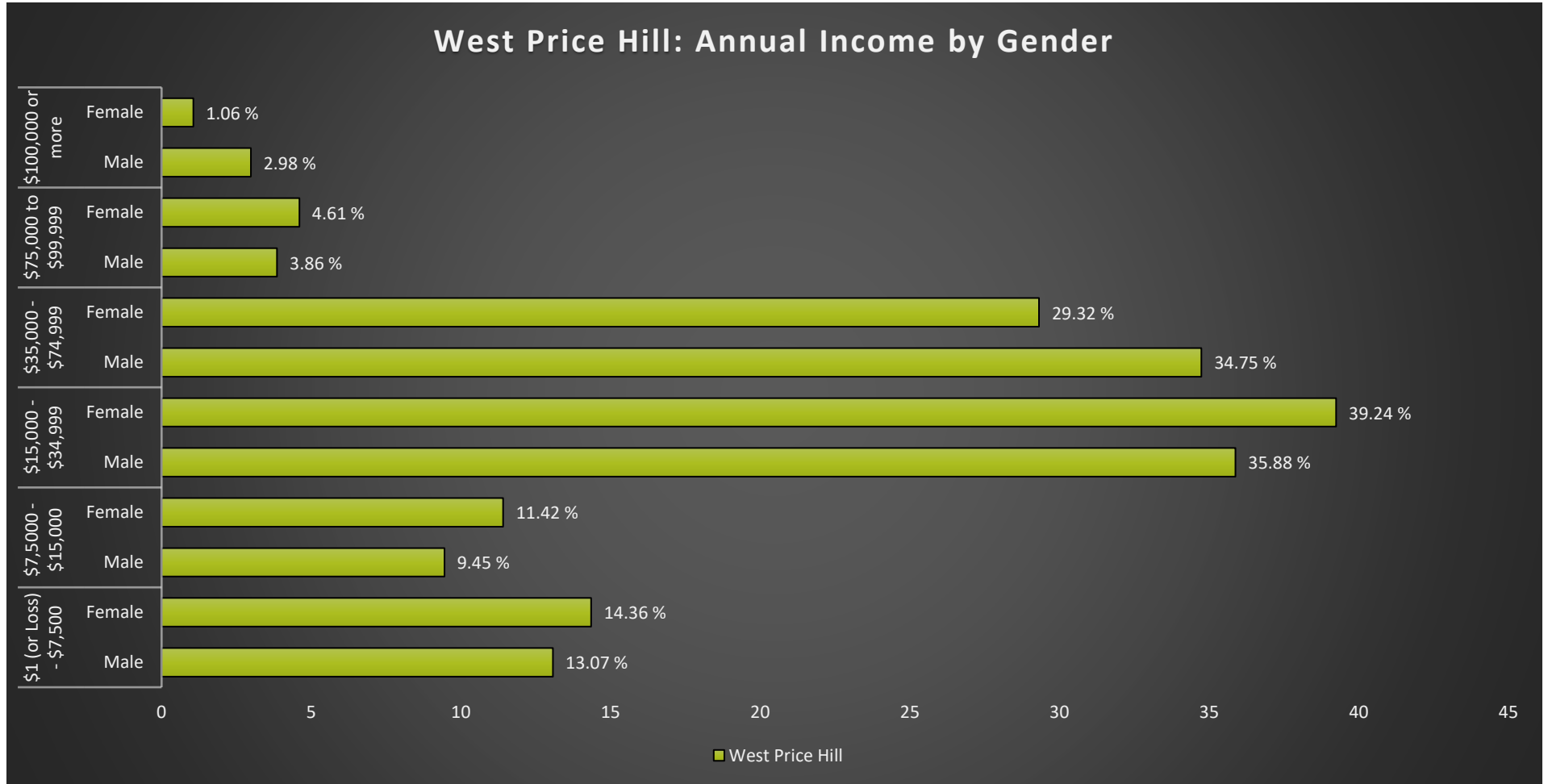
West Price Hill has around 17.1% tree canopy coverage (ranked 29th) and 48.5% of the community is vegetated (ranked 34th highest for all communities assessed). It has “moderate” levels of exposure to PM2.5 and diesel particulate matter and “low” exposure to Superfund sites, potentially toxic industrial sites, and hazardous waste treatment and disposal facilities.

25.3% of the population is living in poverty (ranked 26th) and 25.3% of households receive SNAP benefits. 55.2% of residents rent their homes and 24.6% of residents are renters who spend more than 30% of their income on rent and utilities.



West Price Hill

Cincinnati Neighborhood Profile



West Price Hill Notable Indicators		
<i>% of Residents Living in Poverty</i>	<i>Average Life Expectancy</i>	<i>Exposure to Superfund Sites, Potentially Toxic Industrial Sites, and Hazardous Waste Treatment and Disposal Facilities</i>
25.3% (ranked 26th highest for all communities assessed)	71.7 (ranks 34th out of all communities assessed)	Low

West Price Hill

Cincinnati Neighborhood Profile

People			
Indicator	Rank	%	# of Persons
Population	-	-	16,220
Persons over 65	14	9.0%	1,464
Persons 17 and Under	38	27.5%	4,459
Children Living w/ Grandparents	32	1.7%	278
Race/Ethnicity:			
Black	-	34.9%	5,657
white	-	61.5%	9,977
Asian	-	0.8%	130
Other	-	2.8%	456
Latinx	-	5.0%	805
Persons 5 and Older in Households w/ Limited English Ability	35	1.3%	217

Health			
Indicator	Rank	Value	
Life Expectancy	34	71.7	-
Disease Prevalence Estimates:			
	Rank of % w/Condition	% with Condition	Persons with Condition
Asthma	27	11.6%	1,882
Cancer	29	5.8%	942
Diabetes	21	13.4%	2,169
High Blood Pressure	21	34.7%	5,632
Heart Disease	25	7.9%	1,277
Kidney Disease	23	3.2%	514
Obesity	25	39.2%	6,354
Lack of Health Insurance	27	13.3%	2,164
Persons w/ Independent Living Difficulty	27	3.0%	487
Persons Living w/ Disability	28	14.3%	2,312

Ecosystems and Infrastructure		
Indicator	Rank	Value
Tree Canopy Coverage	29	17.1%
Greenness of Land Surface	34	48.5%
Percent Land in Parks and Greenspaces	20	17.0%
Impervious Surface	26	36%
Heat Island Exposure	21	0.41
Walkability	-	Below Average
Persons w/ Low-Income and Low Food Access	3	0.4%
Transit Accessibility	-	Low
Daytime Population vs. Resident Population	10	51.0%
Commuters Leaving Each Day	-	7,303
Commuters Using Public Transit	23	5.0%

West Price Hill

Cincinnati Neighborhood Profile

Socio-Economic Indicators			
Indicator	Rank	%	#
Persons Living in Poverty	26	25.3%	4,111
SNAP Recipient Households	28	25.3%	1,788
Educational Attainment:			
Less than High School	-	7.5%	-
HS or Equivalent	-	23.6%	-
Some College	-	12.9%	-
Associate's Degree	-	6.0%	-
Bachelor's Degree or Higher	-	14.9%	-
Educational Attainment Index	29	0.38	-
Extreme Housing Burdens:			
Renter-Occupied Housing (as % of All Housing Units)	17	55.2%	3,904
Renters Spending 30% of Income or More on Rent + Utilities	21	24.6%	1,738
Renters Spending 50% of Income or More on Rent + Utilities	21	11.1%	783
Homeowners Spending 30% of Income or More on Mortgage + Utilities	14	15.8%	703
Average Energy Costs (as % of Income)	27	4.5%	-
Persons without Vehicle Access	22	7.4%	1,199

Built Environmental Hazards		
Indicator	Relative Exposure Level	Value
Traffic Exposure	Low	-
Potential Lead Paint Exposure (Houses Built pre-1960)	Very High	75.10%
Cancer Risk from Air Pollution	Low	-
Respiratory Disease Risk from Air Pollution	Low	-
Proximity to Water Pollution Sources	Low	-
PM2.5 Levels in Air, µg/m3	Moderate	9.67
Ozone Concentration, ppb	Low	46.22
Diesel Particulate in Air, µg/m3	Moderate	0.74
Proximity to Superfund Sites	Low	-
Proximity to Potentially Toxic Industrial Activity	Low	-
Proximity to Hazardous Waste Treatment and Disposal Facilities	Low	-

Neighborhood Planning	
Indicator	Description
Community Councils	West Price Hill Community Council
Community Development Corporations	Price Hill Will
Community Plans	Price Hill Plan (2015)