

Sayler Park

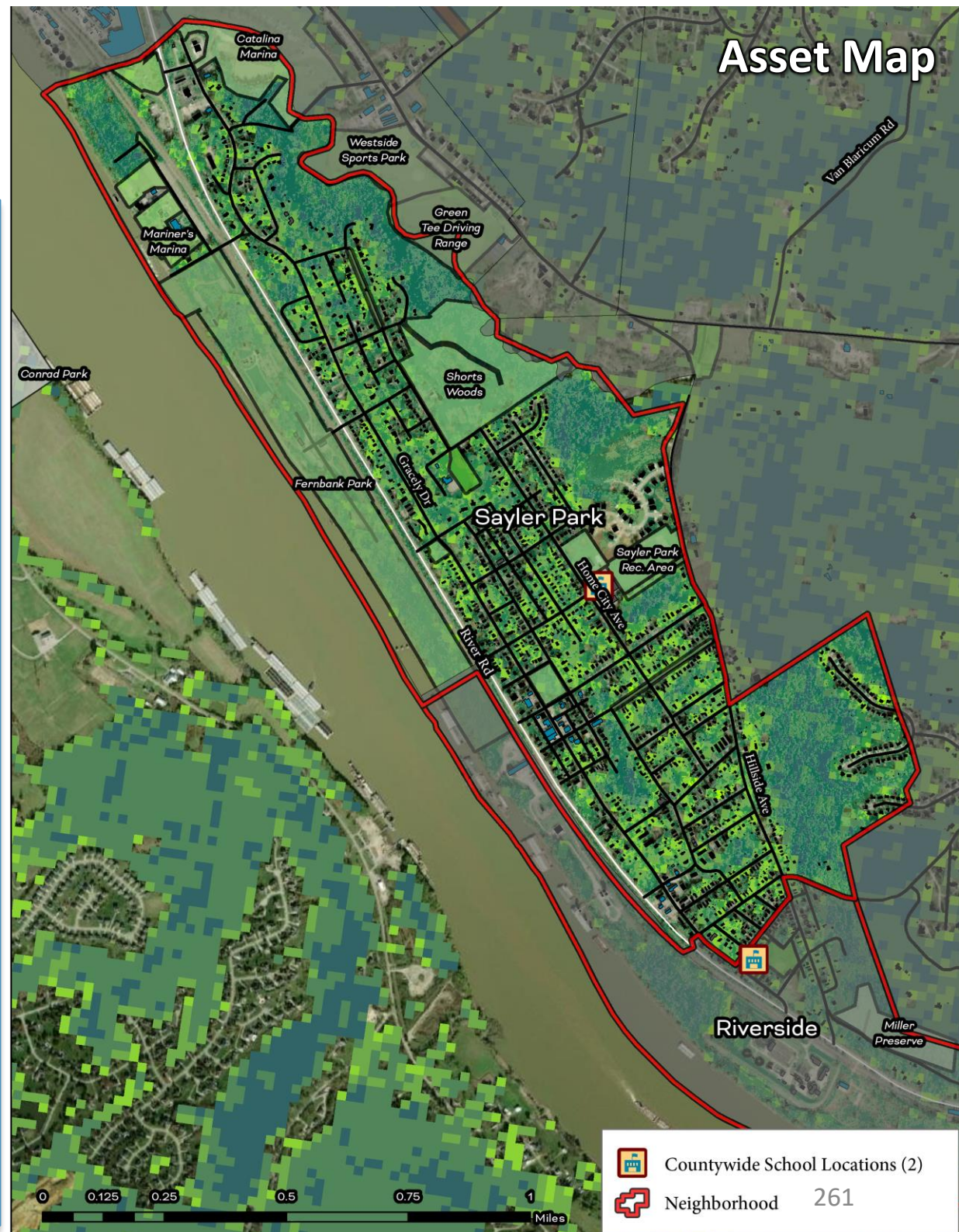
Cincinnati Neighborhood Profile

Sayler Park is a predominantly White neighborhood (93.4%) with a population of 2,855 residents. The neighborhood has its own community council (Sayler Park Community Council) and is a part of a community development corporation (Greater Cincinnati Port Authority). Sayler Park's most recent community plan is the Sayler Park Plan (ongoing).

Of Sayler Park residents, 15.8% are over 65 (ranked 36th out of neighborhoods assessed). Life expectancy is 72.8 years (ranked 27th). There is relatively low disease prevalence, though there is a higher prevalence of cancer among Sayler Park residents compared to other neighborhoods (6.7%, ranked 41st). Of Sayler Park residents, 15.9% of residents live with a disability (ranked 32nd).

Sayler Park ranks 6th in heat island exposure with a heat index of 0.07. The neighborhood ranks 16th in tree canopy coverage (32.1%), 19th in percent of parks and greenspaces (17.2%), and 30th in greenness of land surfaces (51.6%). Sayler Park residents face mostly low exposure to built environmental hazards relative to the other neighborhoods, though there is extreme proximity to water pollution sources as well as moderate traffic exposure and proximity to potentially toxic industrial activity.

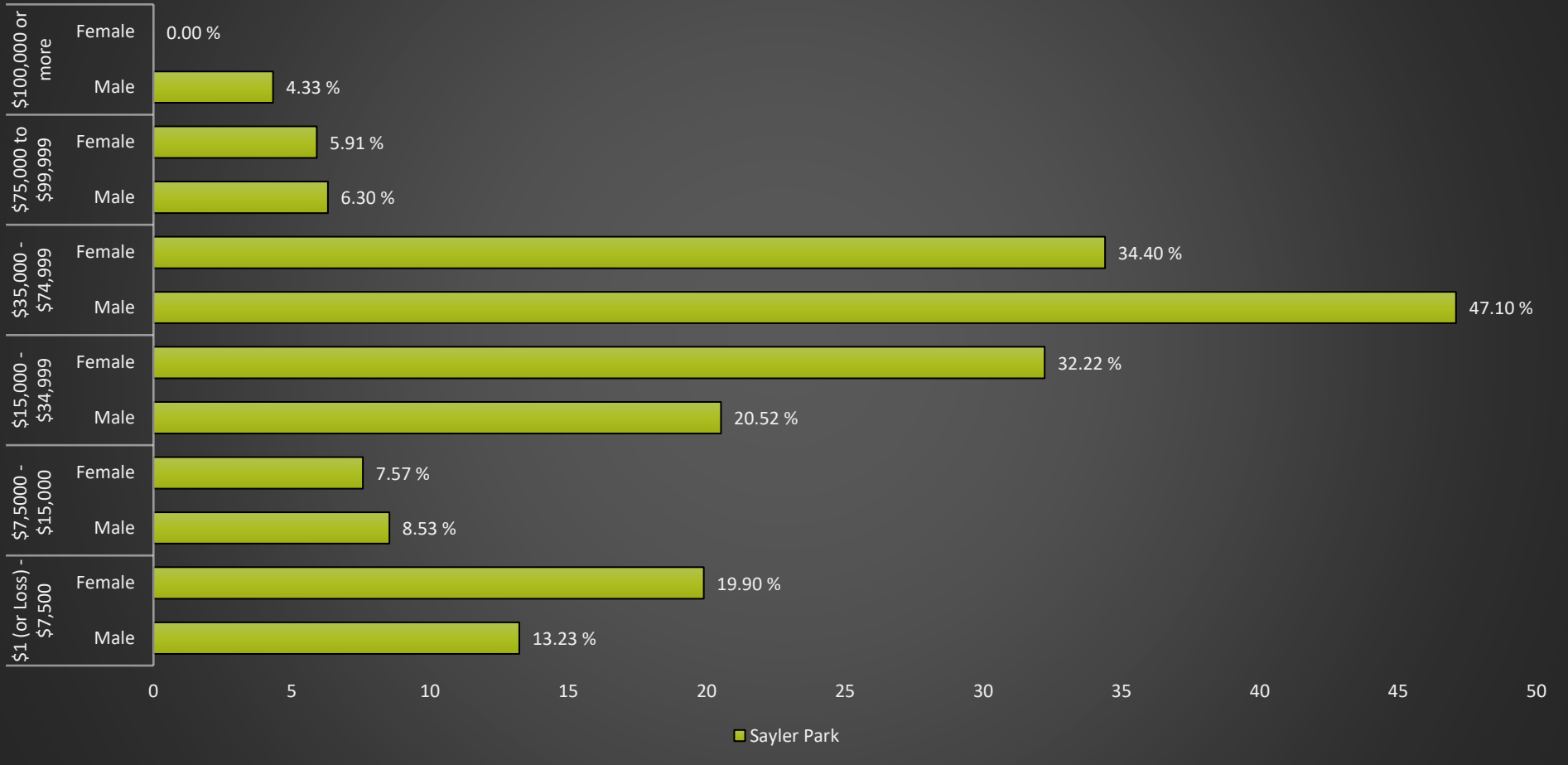
Sayler Park has an educational attainment index of 25. Of Sayler Park's residents, 17.9% live in poverty (ranked 15th) and 15.4% of households receive SNAP benefits (ranked 18th). Sayler Park ranks 5th in percentage of renter occupied housing (37.3%), and 21.6% of homeowners spend 30% or more of their income on housing costs (ranked 33rd). The neighborhood ranks 8th in vehicle access with only 4.1% of residents lacking a vehicle.



Sayler Park

Cincinnati Neighborhood Profile

Sayler Park: Annual Income by Gender



Sayler Park Notable Indicators

<i>Proximity to Water Pollution Sources</i>	<i>Proximity to Hazardous Waste Treatment and Disposal Facilities</i>	<i>Cancer Prevalence</i>
Extreme	Moderate	6.7% (Ranked 41st lowest)

Sayler Park

Cincinnati Neighborhood Profile

People			
Indicator	Rank	%	# of Persons
Population	-	-	2,855
Persons over 65	36	15.8%	450
Persons 17 and Under	24	22.6%	644
Children Living w/ Grandparents	44	3.7%	107
Race/Ethnicity:			
Black	-	3.2%	91
white	-	93.4%	2,667
Asian	-	0.0%	-
Other	-	3.4%	97
Latinx	-	6.0%	170
Persons 5 and Older in Households w/ Limited English Ability	3	0.0%	-

Health			
Indicator	Rank	Value	
Life Expectancy	27	72.8 years	-
Disease Prevalence Estimates:			
	Rank of % w/Condition	% with Condition	Persons with Condition
Asthma	13	9.9%	283
Cancer	41	6.7%	190
Diabetes	18	12.1%	346
High Blood Pressure	18	32.4%	925
Heart Disease	27	8.0%	228
Kidney Disease	18	2.9%	82
Obesity	13	32.9%	939
Lack of Health Insurance	14	9.9%	283
Persons w/ Independent Living Difficulty	10	1.4%	41
Persons Living w/ Disability	32	15.9%	455

Ecosystems and Infrastructure		
Indicator	Rank	Value
Tree Canopy Coverage	16	32.1%
Greenness of Land Surface	30	51.6%
Percent Land in Parks and Greenspaces	19	17.2%
Impervious Surface	9	20%
Heat Island Exposure	6	0.07
Walkability	-	Least Walkable to Above Average
Persons w/ Low-Income and Low Food Access	28	36.7%
Transit Accessibility	-	Good to Excellent
Daytime Population vs. Resident Population	5	42.2%
Commuters Leaving Each Day	-	1,407
Commuters Using Public Transit	10	3.0%

Sayler Park

Cincinnati Neighborhood Profile

Socio-Economic Indicators			
Indicator	Rank	%	#
Persons Living in Poverty	15	17.9%	511
SNAP Recipient Households	18	15.4%	180
Educational Attainment:			
Less than High School	-	8.2%	-
HS or Equivalent	-	27.3%	-
Some College	-	13.7%	-
Associate's Degree	-	4.9%	-
Bachelor's Degree or Higher	-	16.1%	-
Educational Attainment Index	25	0.41	-
Extreme Housing Burdens:			
Renter-Occupied Housing (as % of All Housing Units)	5	37.3%	436
Renters Spending 30% of Income or More on Rent + Utilities	11	19.0%	222
Renters Spending 50% of Income or More on Rent + Utilities	14	9.5%	111
Homeowners Spending 30% of Income or More on Mortgage + Utilities	33	21.6%	158
Average Energy Costs (as % of Income)	25	4.1%	-
Persons without Vehicle Access	8	4.1%	116

Built Environmental Hazards		
Indicator	Relative Exposure Level	Value
Traffic Exposure	Moderate	-
Potential Lead Paint Exposure (Houses Built pre-1960)	24	63.54%
Cancer Risk from Air Pollution	Low	-
Respiratory Disease Risk from Air Pollution	Low	-
Proximity to Water Pollution Sources	Extreme	-
PM2.5 Levels in Air, µg/m3	Low	9.43
Ozone Concentration, ppb	Low	45.75
Diesel Particulate in Air, µg/m3	Low	0.65
Proximity to Superfund Sites	Low	-
Proximity to Potentially Toxic Industrial Activity	Moderate	-
Proximity to Hazardous Waste Treatment and Disposal Facilities	Low	-

Neighborhood Planning	
Indicator	Description
Community Councils	Sayler Park Community Council
Community Development Corporations	Greater Cincinnati Port Authority
Community Plans	Sayler Park Plan (Ongoing)