



**Lower Mill Creek Valley
US EPA Brownfield
Assessment Grant**

- **Amanda Testerman**
- **Cincinnati Office of Environment and Sustainability (OES)**
- **3/31/25**

Introduction

- Amanda Testerman
- City of Cincinnati Office of Environment and Sustainability (OES)
- Amanda.Testerman@Cincinnati-oh.gov
- 513-352-5310

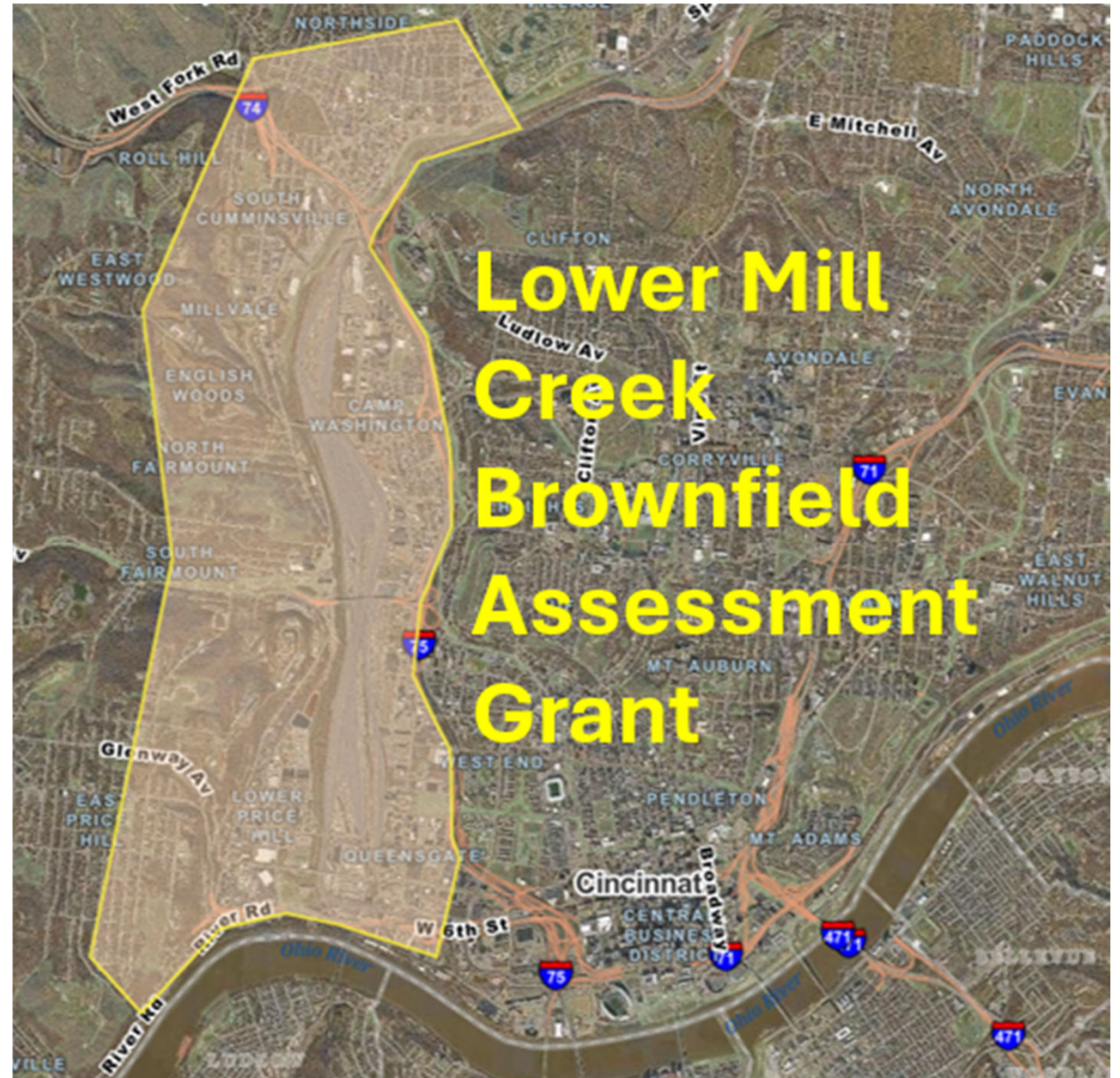


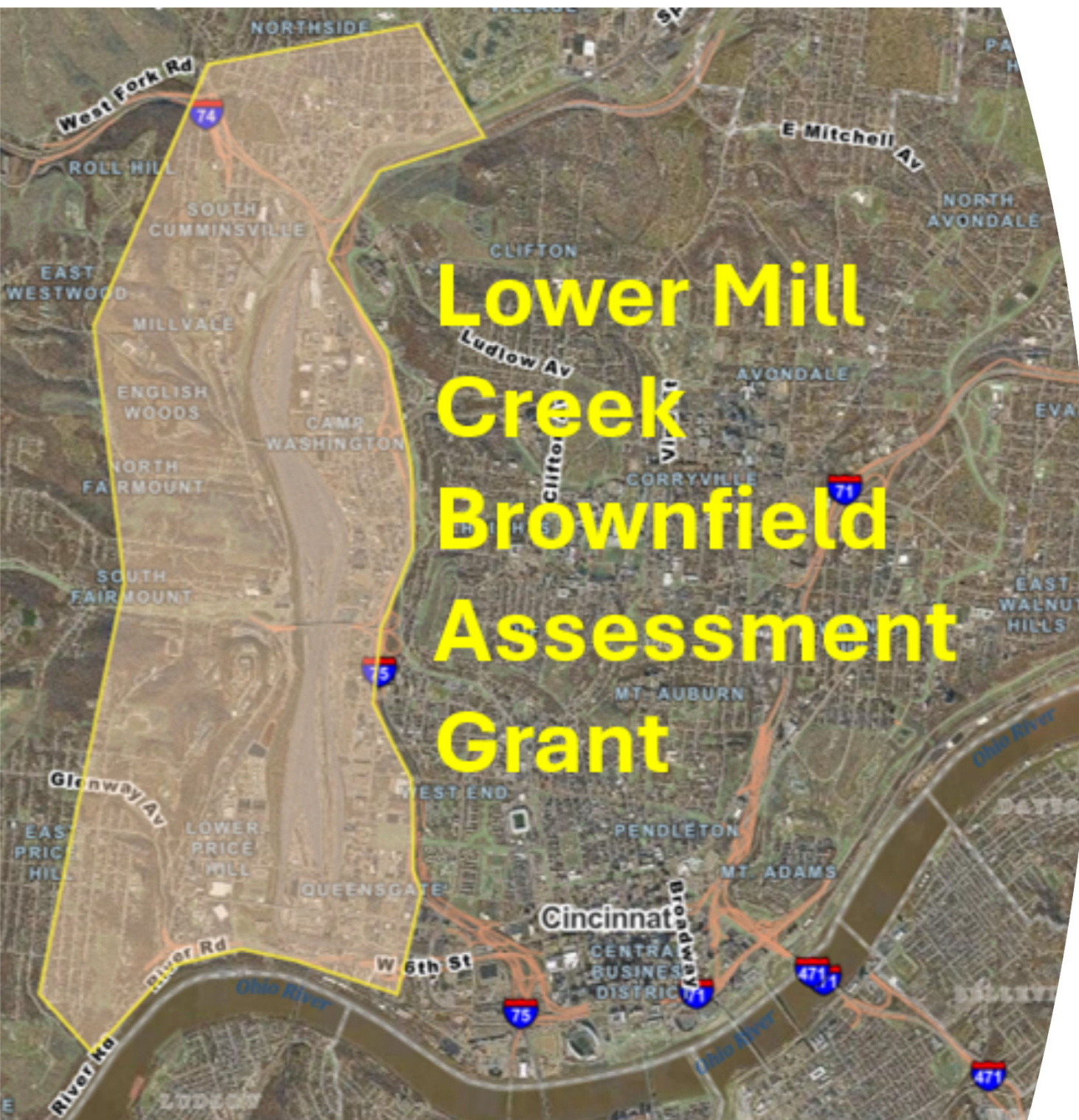
Green Cincinnati Plan



Introduction

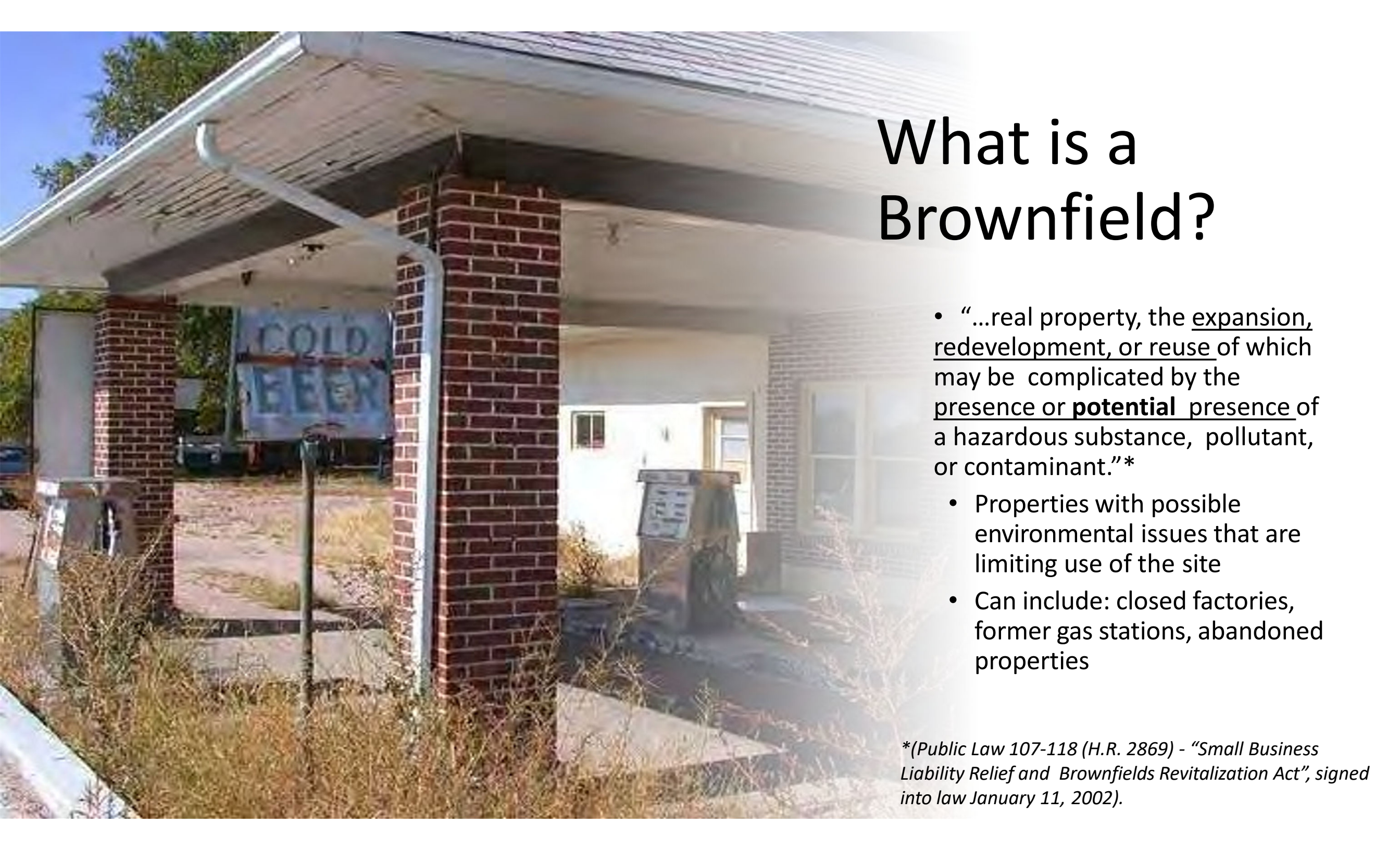
- The City of Cincinnati was awarded a \$500,000 US EPA Brownfield Grant focused on the Lower Mill Creek Valley.
- The grant includes funds to complete community engagement, a brownfield inventory, environmental site assessments, clean-up plans, and re-use planning





Where is the grant focused?

- The Lower Mill Creek Valley geographic area is a 7.1-square mile area entirely within the City's jurisdiction with a population of 19,305. It is approximately bounded by Interstate-74 to the north, the Ohio River to the south, a steep elongated hillside to the west, and Central Parkway to the east.
- Neighborhoods included in this area are: Lower Price Hill, South Fairmount, North Fairmount, English Woods, South Cumminsville, Millvale, Camp Washington, Queensgate, and Northside.

A photograph of a single-story house with a brick chimney and a sign that says "COLD BEER". The house appears to be in poor condition, with overgrown grass and a faded sign, suggesting it might be a brownfield site.

What is a Brownfield?

- “...real property, the expansion, redevelopment, or reuse of which may be complicated by the presence or **potential** presence of a hazardous substance, pollutant, or contaminant.”*
- Properties with possible environmental issues that are limiting use of the site
- Can include: closed factories, former gas stations, abandoned properties

**(Public Law 107-118 (H.R. 2869) - “Small Business Liability Relief and Brownfields Revitalization Act”, signed into law January 11, 2002).*

Local Brownfields Include....

Beekman Silos



Crosley Radio



Lunkenheimer



American Can Building in Northside - 2006



American Can Building in Northside - 2023

Why is this important?

Brownfields can be a drain on communities.

- The buildings can release environmental contamination
- Buildings may be abandoned and in poor condition
- Buildings may foster unsafe spaces with increased vandalism
- Prevent the re-use of the building
- Loss of economic centers and jobs

Revitalizing Brownfields can create:

- Investment and economic development
- Job access, creation and training
- Secure, stable, and attainable housing
- Energy efficient and climate resilient infrastructure
- Local fresh food access
- Connectivity to jobs, recreation, and entertainment
- A healthier population
- Proud place-made destinations

Assessing the properties is the first step in building something new.

How can you get involved?

- **We need community input**
 - What types of sites should be assessed?
 - Are there specific buildings or properties important to you or your neighborhood?
 - What do you want the reuse of the sites to be?

Survey Link: <https://forms.office.com/r/HvSRdDzraA>

Project Website:

<https://www.cincinnati-oh.gov/oes/resilience-and-climate-adaptation/brownfield-revitalization/lower-mill-creek-brownfield-assessment-grant/>

