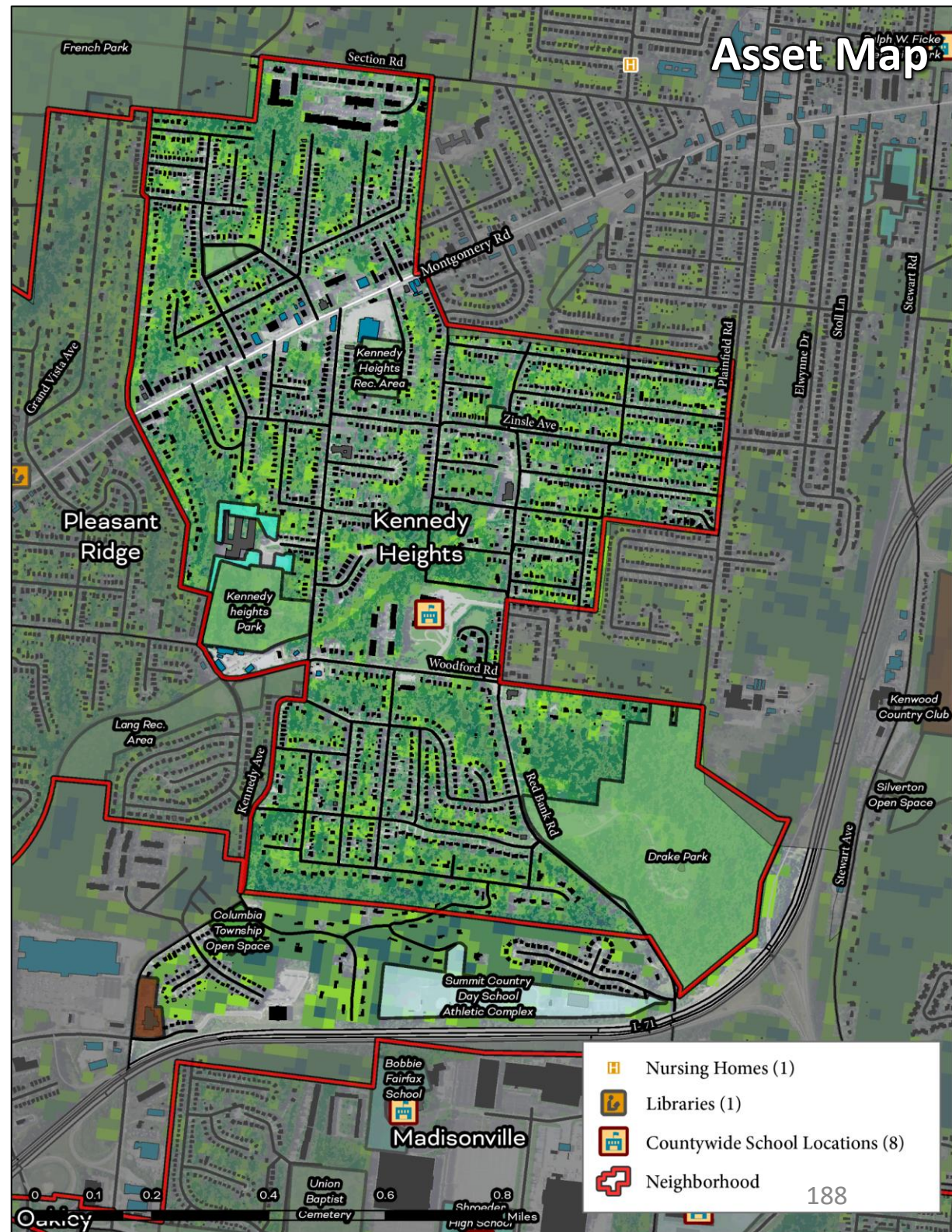


# Kennedy Heights

## Cincinnati Neighborhood Profile

Kennedy Heights is a majority Black neighborhood (54%) with 5,701 residents. It has an active community council (Kennedy Heights Community Council), a community development corporation (Kennedy Heights Development Corporation), and a community plan (Kennedy Heights Comprehensive Community Plan (2003)). The average life expectancy for the neighborhood is 77.2 (ranking 11th of all communities assessed) and has a high percentage of persons over 65 (21.3%). Kennedy Heights has a “high” prevalence of cancer (6.4%), diabetes (17.2%), kidney disease (3.8%), and high blood pressure (40%) relative to all communities assessed.

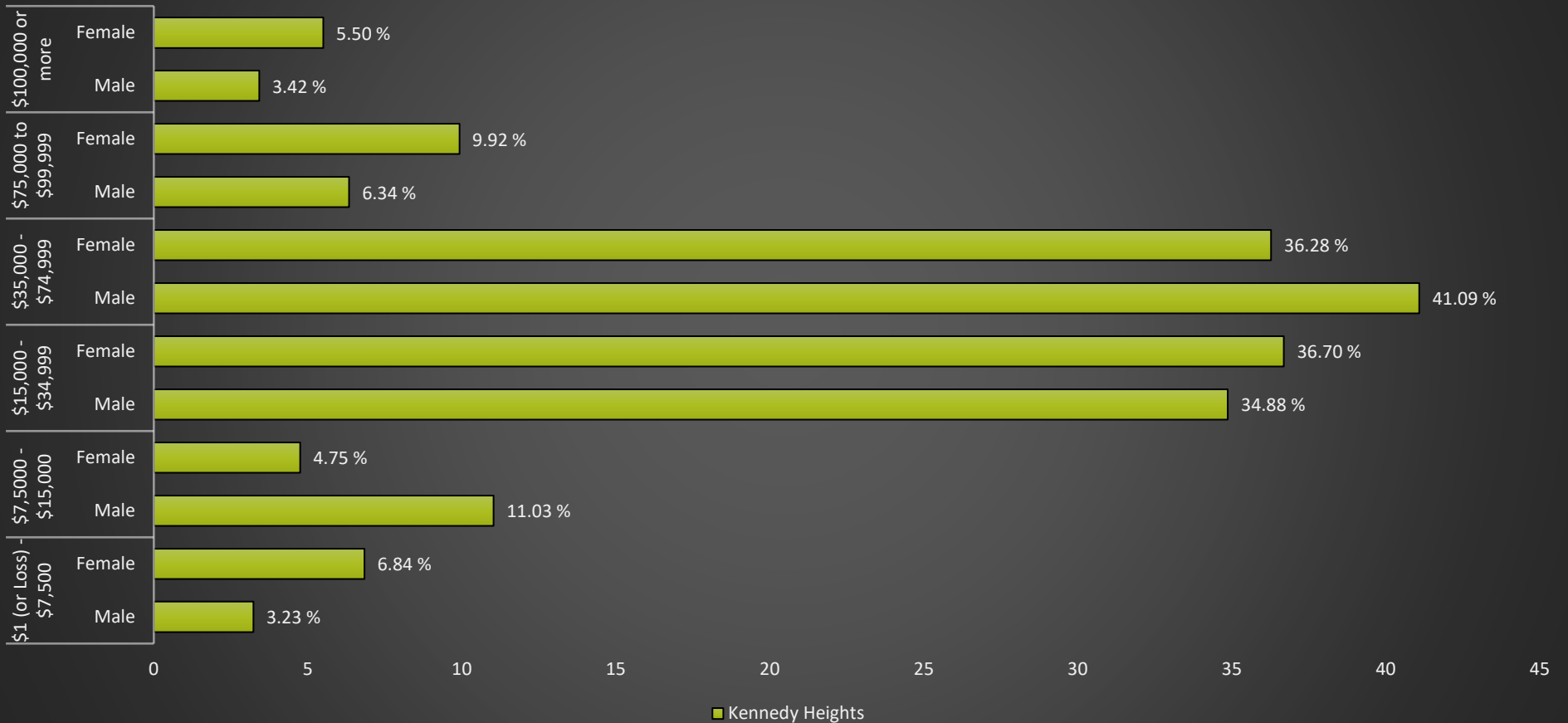
The neighborhood has ~32.2% tree canopy cover (ranked 15th of all communities assessed). It has “good to excellent” access to public transit and “above average” walkability. It has “extreme” exposure to ozone concentrations and to Superfund sites. Around 15.9% of Kennedy Heights residents are living in poverty (ranked 11th of all communities assessed).



# Kennedy Heights

## Cincinnati Neighborhood Profile

Kennedy Heights: Annual Income by Gender



### Kennedy Heights Notable Indicators

<i>% of Residents Living in Poverty</i>	<i>Exposure to Superfund Sites</i>	<i>% of Residents Over 65</i>
77.2 (ranked 11th highest for all communities assessed)	Extreme	21.3%

# Kennedy Heights

## Cincinnati Neighborhood Profile

People			
Indicator	Rank	%	# of Persons
Population	-	-	5,701
Persons over 65	47	21.3%	1,214
Persons 17 and Under	20	20.8%	1,185
Children Living w/ Grandparents	9	0.1%	8
Race/Ethnicity:			
Black	-	54.0%	3,080
white	-	28.1%	1,603
Asian	-	0.2%	10
Other	-	17.7%	1,008
Latinx	-	3.7%	213
Persons 5 and Older in Households w/ Limited English Ability	28	0.7%	42

Health			
Indicator	Rank	Value	
Life Expectancy	11	77.2 years	-
Disease Prevalence Estimates:	Rank of % w/Condition	% with Condition	Persons with Condition
Asthma	16	10.4%	591
Cancer	37	6.4%	365
Diabetes	32	17.2%	981
Heart Disease	26	7.9%	452
High Blood Pressure	33	40.0%	2,281
Kidney Disease	30	3.8%	216
Obesity	21	37.5%	2,137
Lack of Health Insurance	16	10.1%	575
Persons w/ Independent Living Difficulty	31	3.5%	200
Persons Living w/ Disability	22	13.8%	787

Ecosystems and Infrastructure		
Indicator	Rank	Value
Tree Canopy Coverage	15	32.2%
Greenness of Land Surface	18	61.0%
Percent Land in Parks and Greenspaces	25	15.3%
Impervious Surface	10	23%
Heat Island Exposure	17	0.31
Walkability	-	Above Average
Persons w/ Low-Income and Low Food Access	22	24.2%
Transit Accessibility	-	Good to Excellent
Daytime Population vs. Resident Population	7	47.0%
Commuters Leaving Each Day	-	2,405
Commuters Using Public Transit	21	4.8%

# Kennedy Heights

## Cincinnati Neighborhood Profile

Socio-Economic Indicators			
Indicator	Rank	%	#
Persons Living in Poverty	11	15.9%	906
SNAP Recipient Households	15	13.0%	340
<b>Educational Attainment:</b>			
Less than High School	-	4.1%	-
HS or Equivalent	-	15.1%	-
Some College	-	16.0%	-
Associate's Degree	-	8.1%	-
Bachelor's Degree or Higher	-	23.1%	-
Educational Attainment Index	18	0.46	-
<b>Extreme Housing Burdens:</b>			
Renter-Occupied Housing (as % of All Housing Units)	11	49.4%	1,295
Renters Spending 30% of Income or More on Rent + Utilities	7	14.2%	371
Renters Spending 50% of Income or More on Rent + Utilities	8	7.8%	205
Homeowners Spending 30% of Income or More on Mortgage + Utilities	15	15.9%	211
Average Energy Costs (as % of Income)	13	3.1%	-
Persons without Vehicle Access	29	9.2%	526

Built Environmental Hazards		
Indicator	Relative Exposure Level	Value
Traffic Exposure	Moderate	-
Potential Lead Paint Exposure (Houses Built pre-1960)	Moderate	57.82%
Cancer Risk from Air Pollution	Moderate	-
Respiratory Disease Risk from Air Pollution	Low	-
Proximity to Water Pollution Sources	Low	-
PM2.5 Levels in Air, µg/m3	High	9.72
Ozone Concentration, ppb	Extreme	46.96
Diesel Particulate in Air, µg/m3	Low	0.74
Proximity to Superfund Sites	Extreme	-
Proximity to Potentially Toxic Industrial Activity	Low	-
Proximity to Hazardous Waste Treatment and Disposal Facilities	Very High	-

Neighborhood Planning	
Indicator	Description
Community Councils	Kennedy Heights Community Council
Community Development Corporations	Kennedy Heights Development Corporation
Community Plans	Kennedy Heights Comprehensive Community Plan (2003); Kennedy Heights Neighborhood Plan (Currently in Process)