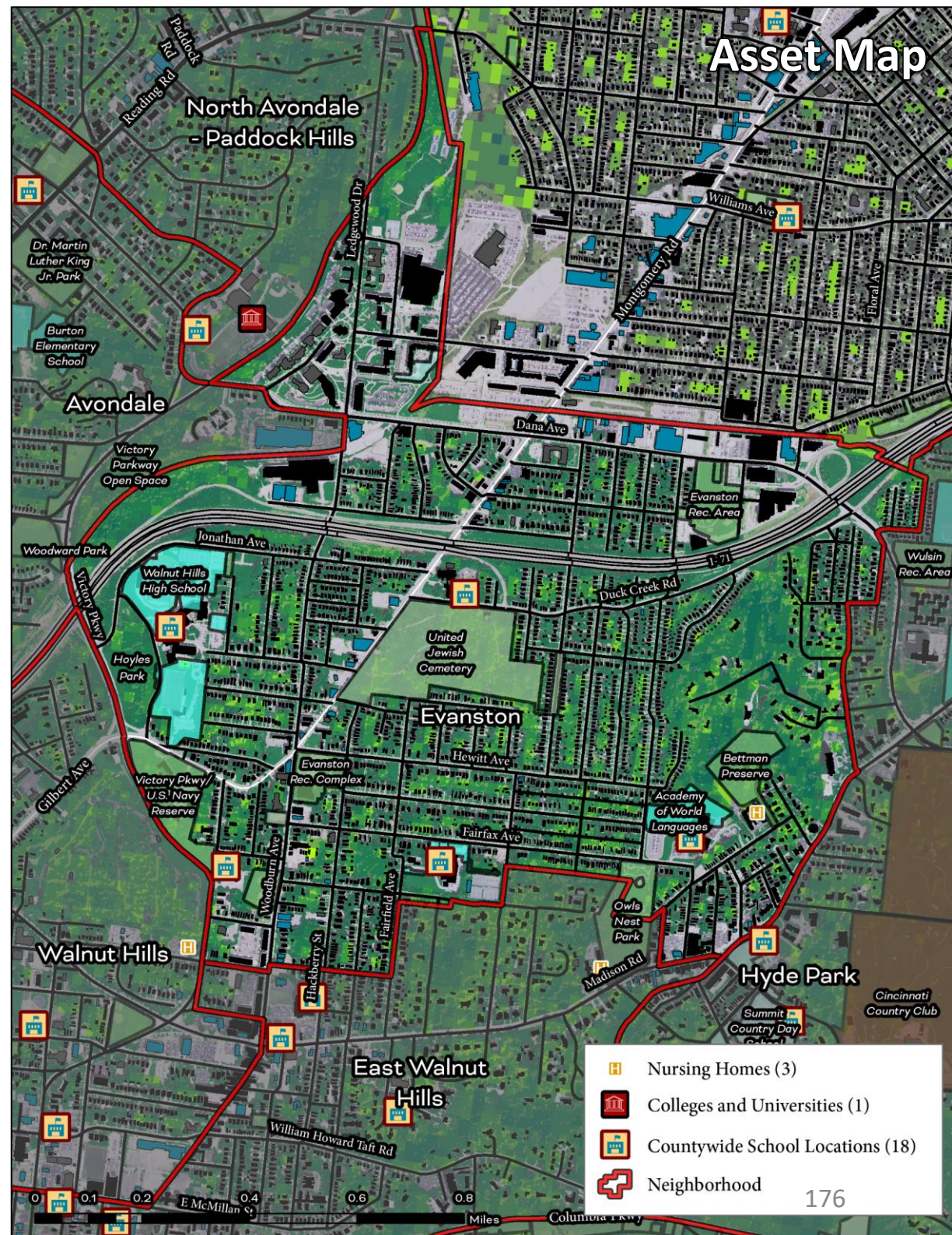


Evanston

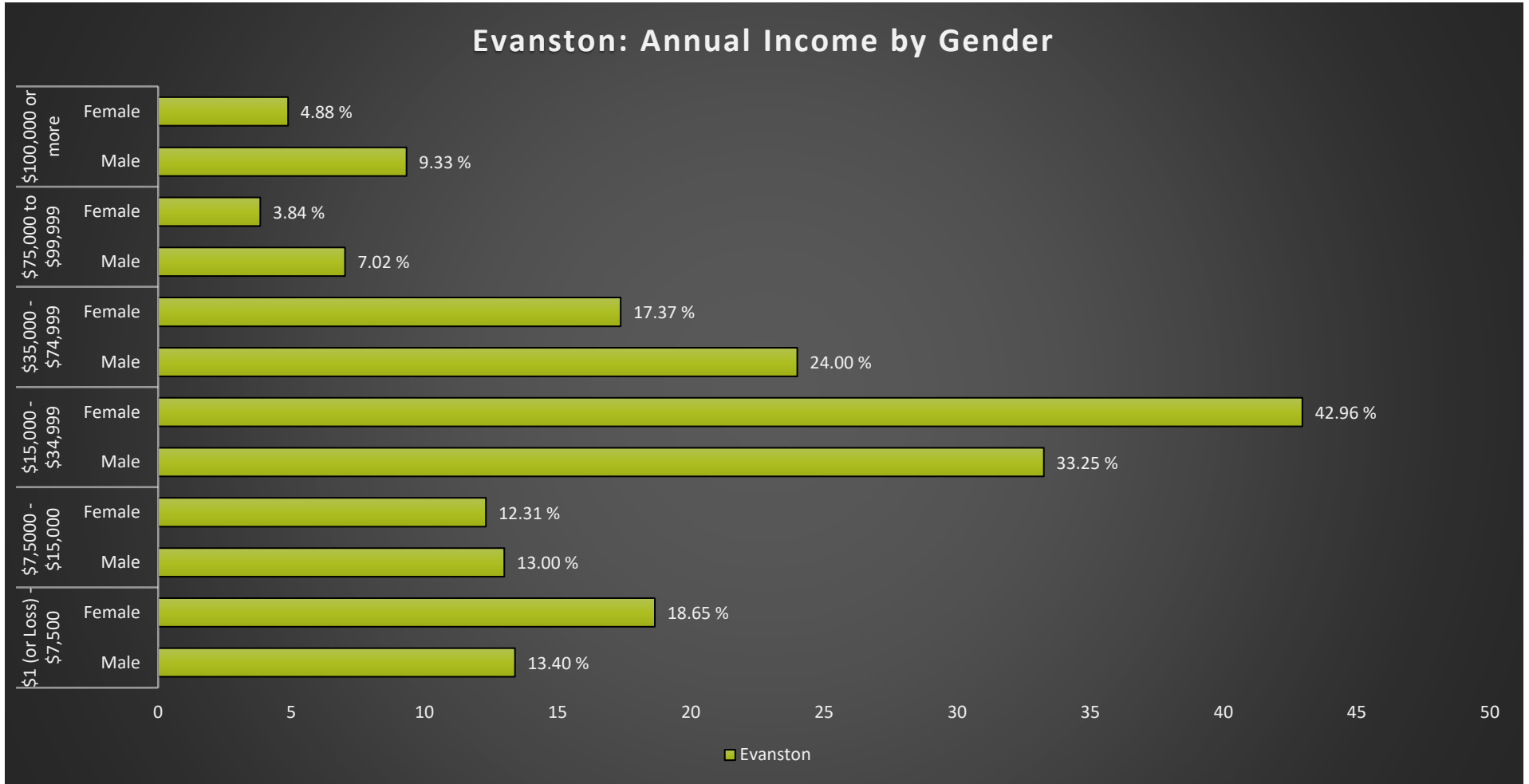
Cincinnati Neighborhood Profile

Evanston is a majority Black neighborhood (71.7%) with 5,994 residents. It has active community councils (Evanston Community Council) and several guiding community plans (Evanston Work Plan (2019) and the Evanston Five Point Urban Plan). The average life expectancy for the neighborhood is 73.8 (ranked 22nd of all communities assessed). Evanston has a “high” prevalence of cancer (6.7%), diabetes (22.1%), high blood pressure (49.6%), kidney disease (4.8%), and obesity (48.3%). It has a “high” number of residents living with a disability (22%). 15.1% of the community lacks health insurance (ranked 32nd of all communities assessed). The neighborhood has ~13.5% tree canopy cover (ranked 35th of all communities assessed) and 14.5% of land in parks and greenspaces (ranked 28th of all communities assessed). It has “good to excellent” access to public transit and “above average” walkability. It has “very high” cancer risk and respiratory disease risk due to air pollution. It also has “very high” exposure to Superfund sites and hazardous waste treatment and disposal facilities. Around 24.6% of Evanston residents are living in poverty (ranked 24th of all communities assessed) and 22.3% are SNAP recipient households (ranked 25th of all communities assessed).



Evanston

Cincinnati Neighborhood Profile



Evanston Notable Indicators

Average Life Expectancy	Exposure to Superfund Sites and Hazardous Waste Treatment Sites	% of Residents Living in Poverty
73.8 (ranked 22nd highest for all communities assessed)	Very High	24.6% (ranked 24th highest for all communities assessed)

Cincinnati Neighborhood Profile

People			
Indicator	Rank	%	# of Persons
Population	-	-	5,994
Persons over 65	40	16.9%	1,014
Persons 17 and Under	31	24.3%	1,459
Children Living w/ Grandparents	37	2.4%	143
Race/Ethnicity:			
Black	-	71.7%	4,298
white	-	19.8%	1,186
Asian	-	0.9%	52
Other	-	7.6%	458
Latinx	-	2.2%	132
Persons 5 and Older in Households w/ Limited English Ability	15	0.1%	6

Health			
Indicator	Rank	Value	
Life Expectancy	22	73.8 years	-
Disease Prevalence Estimates:			
	Rank of % w/Condition	% with Condition	Persons with Condition
Asthma	36	13.7%	818
Cancer	42	6.7%	401
Diabetes	40	22.1%	1,325
High Blood Pressure	47	49.6%	2,975
Heart Disease	36	9.7%	581
Kidney Disease	42	4.8%	289
Obesity	39	48.3%	2,896
Lack of Health Insurance	32	15.1%	906
Persons w/ Independent Living Difficulty	44	4.9%	294
Persons Living w/ Disability	47	22.0%	1,318

Ecosystems and Infrastructure		
Indicator	Rank	Value
Tree Canopy Coverage	35	13.5%
Greenness of Land Surface	33	48.6%
Percent Land in Parks and Greenspaces	28	14.5%
Impervious Surface	34	48%
Heat Island Exposure	39	1.12
Walkability	-	Above Average to Most Walkable
Persons w/ Low-Income and Low Food Access	35	57.5%
Transit Accessibility	-	Good to Excellent
Daytime Population vs. Resident Population	25	88.1%
Commuters Leaving Each Day	-	2,360
Commuters Using Public Transit	38	15.0%

Cincinnati Neighborhood Profile

Socio-Economic Indicators			
Indicator	Rank	%	#
Persons Living in Poverty	24	24.6%	1,475
SNAP Recipient Households	25	22.3%	581
Educational Attainment:			
Less than High School	-	7.7%	-
HS or Equivalent	-	20.5%	-
Some College	-	15.4%	-
Associate's Degree	-	3.9%	-
Bachelor's Degree or Higher	-	19.0%	-
Educational Attainment Index	24	0.41	-
Extreme Housing Burdens:			
Renter-Occupied Housing (as % of All Housing Units)	15	54.4%	1,417
Renters Spending 30% of Income or More on Rent + Utilities	22	27.3%	711
Renters Spending 50% of Income or More on Rent + Utilities	28	14.7%	383
Homeowners Spending 30% of Income or More on Mortgage + Utilities	38	23.8%	283
Average Energy Costs (as % of Income)	37	6.0%	-
Persons without Vehicle Access	36	11.9%	711

Built Environmental Hazards		
Indicator	Relative Exposure Level	Value
Traffic Exposure	Very High	-
Potential Lead Paint Exposure (Houses Built pre-1960)	Extreme	85.14%
Cancer Risk from Air Pollution	Very High	-
Respiratory Disease Risk from Air Pollution	Very High	-
Proximity to Water Pollution Sources	Moderate	-
PM2.5 Levels in Air, µg/m3	High	9.75
Ozone Concentration, ppb	Very High	46.80
Diesel Particulate in Air, µg/m3	Very High	1.13
Proximity to Superfund Sites	Very High	-
Proximity to Potentially Toxic Industrial Activity	High	-
Proximity to Hazardous Waste Treatment and Disposal Facilities	Very High	-

Neighborhood Planning	
Indicator	Description
Community Councils	Evanston Community Council
Community Development Corporations	NA
Community Plans	Evanston Work Plan (2019); Evanston Five Point Urban Renewal Plan (2003)