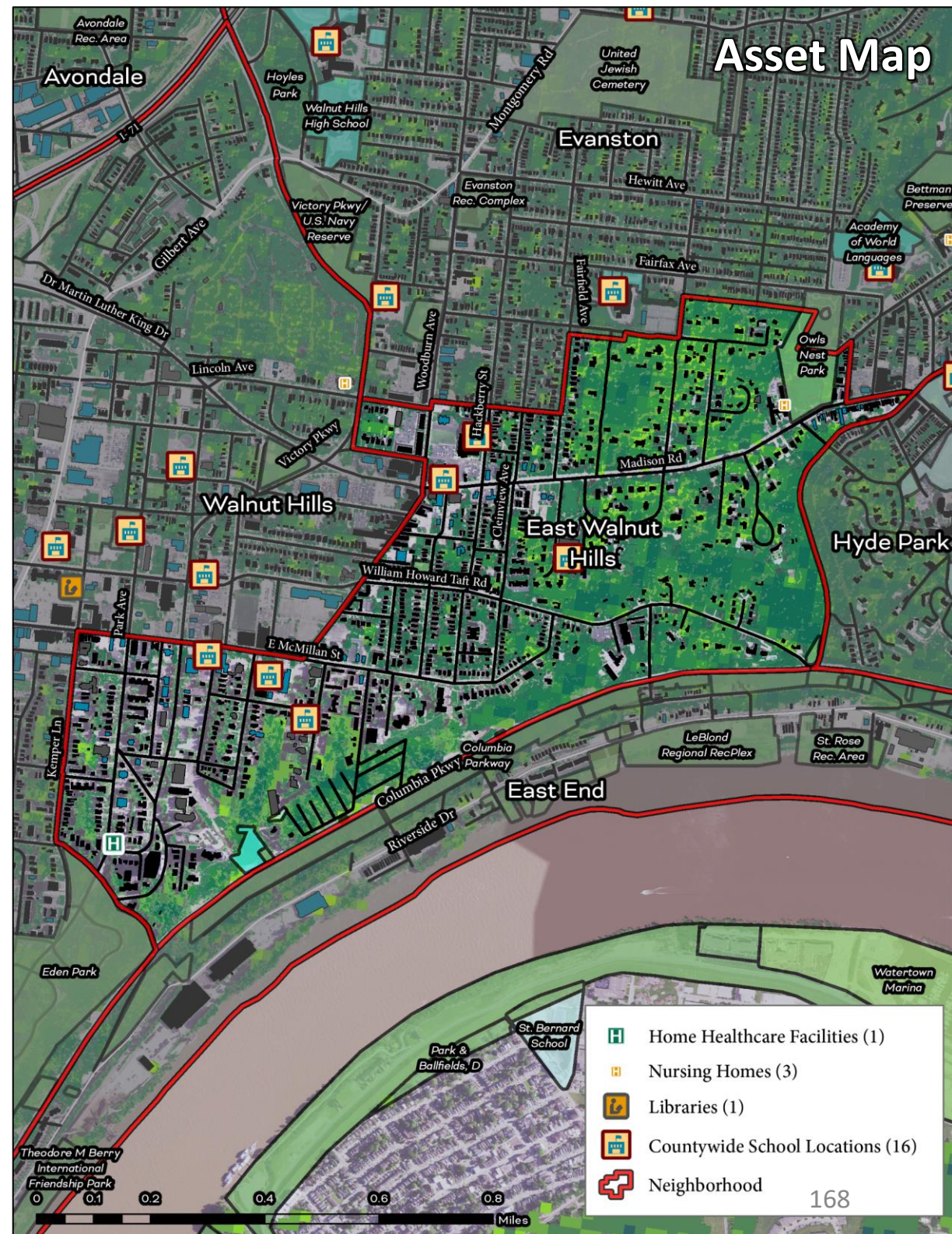


East Walnut Hills

Cincinnati Neighborhood Profile

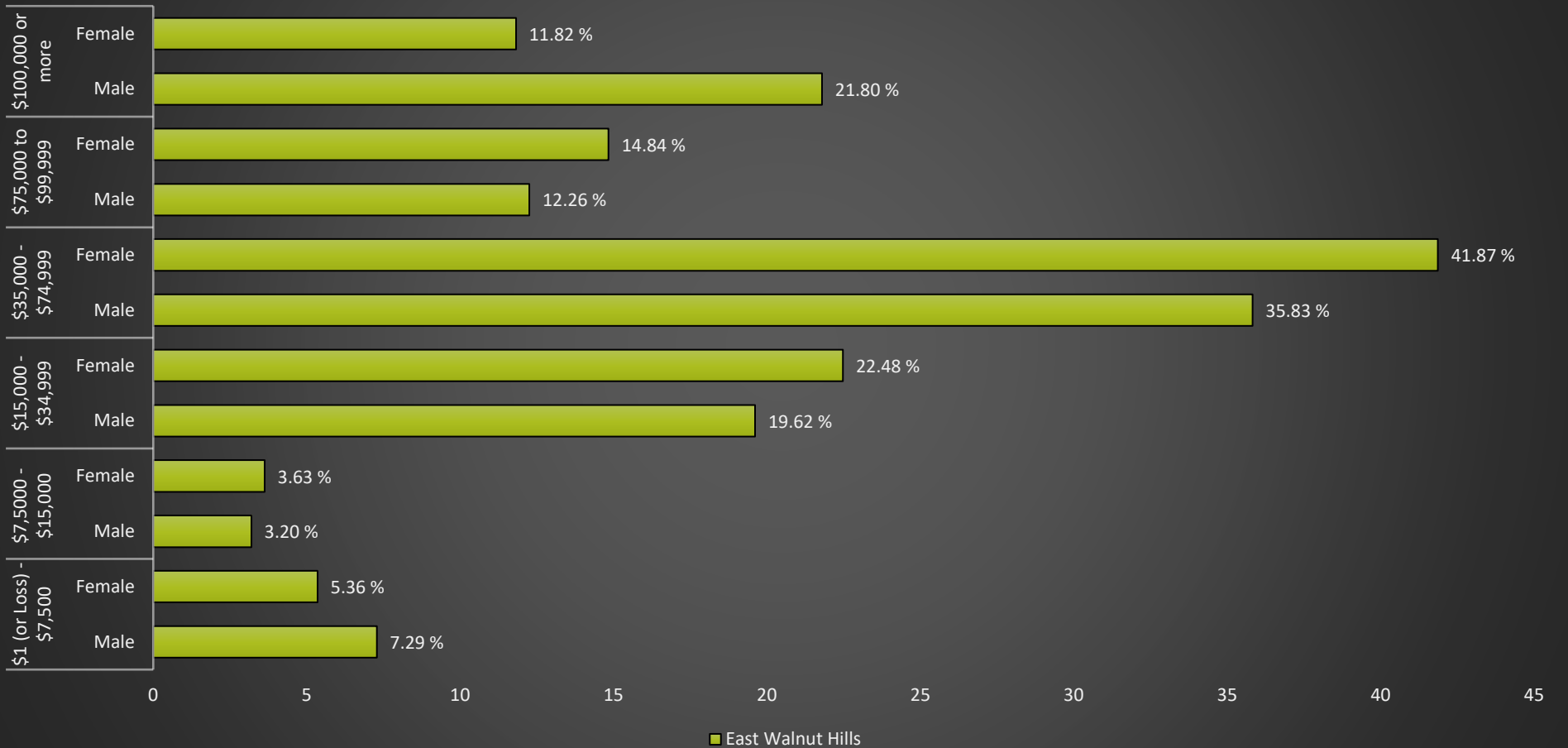
East Walnut Hills is a predominantly white neighborhood (64.6%) with 4,931 residents. It has active community councils (East Walnut Hills Assembly) and a community development corporation (Walnut Hills Redevelopment Foundation). The average life expectancy for the neighborhood is 78.4 (ranked 10th of all communities assessed). East Walnut Hills has a relatively low prevalence of diabetes (11%), high blood pressure (31.6%), kidney disease (2.7%), obesity (30.6%), and heart disease (6.2%) of all communities assessed. The neighborhood has ~24.9% tree canopy cover (ranked 25th of all communities assessed) but only 3.5% of land in parks and greenspaces (43rd of all communities assessed). It has “good” access to public transit and “above average” walkability. It has “very high” cancer risk from air pollution, respiratory disease risk from air pollution, ozone, and diesel particulates. It also has “very high” exposure to Superfund Sites. Around 13.8% of East Walnut Hills residents are living in poverty (ranked 9th of all communities assessed).



East Walnut Hills

Cincinnati Neighborhood Profile

East Walnut Hills: Annual Income by Gender



East Walnut Hills Notable Indicators

Average Life Expectancy	Exposure to Superfund Sites	% of Residents Living in Poverty
78.4 (ranked 10th longest for all communities assessed)	Very High	13.8% (ranked 9th highest for all communities assessed)

East Walnut Hills

Cincinnati Neighborhood Profile

People			
Indicator	Rank	%	# of Persons
Population	-	-	4,931
Persons over 65	41	17.3%	852
Persons 17 and Under	6	11.4%	564
Children Living w/ Grandparents	15	0.5%	23
Race/Ethnicity:			
Black	-	26.7%	1,316
white	-	64.6%	3,184
Asian	-	2.7%	133
Other	-	6.0%	298
Latinx	-	2.5%	121
Persons 5 and Older in Households w/ Limited English Ability	17	0.1%	7

Health			
Indicator	Rank	Value	
Life Expectancy	10	78.4 years	-
Disease Prevalence Estimates:			
	Rank of % w/Condition	% with Condition	Persons with Condition
Asthma	9	9.0%	446
Cancer	38	6.4%	316
Diabetes	13	11.0%	542
High Blood Pressure	16	31.6%	1,560
Heart Disease	17	6.2%	303
Kidney Disease	17	2.7%	133
Obesity	11	30.6%	1,507
Lack of Health Insurance	8	7.2%	357
Persons w/ Independent Living Difficulty	13	1.8%	91
Persons Living w/ Disability	12	9.9%	490

Ecosystems and Infrastructure		
Indicator	Rank	Value
Tree Canopy Coverage	25	24.9%
Greenness of Land Surface	31	50.9%
Percent Land in Parks and Greenspaces	43	3.5%
Impervious Surface	25	35%
Heat Island Exposure	25	0.53
Walkability	-	Above Average
Persons w/ Low-Income and Low Food Access	24	25.2%
Transit Accessibility	-	Good
Daytime Population vs. Resident Population	28	101.5%
Commuters Leaving Each Day	-	2,733
Commuters Using Public Transit	25	6.2%

East Walnut Hills

Cincinnati Neighborhood Profile

Socio-Economic Indicators			
Indicator	Rank	%	#
Persons Living in Poverty	9	13.8%	680
SNAP Recipient Households	8	8.8%	244
Educational Attainment:			
Less than High School	-	4.3%	-
HS or Equivalent	-	8.4%	-
Some College	-	11.6%	-
Associate's Degree	-	4.0%	-
Bachelor's Degree or Higher	-	49.3%	-
Educational Attainment Index	7	0.64	-
Extreme Housing Burdens:			
Renter-Occupied Housing (as % of All Housing Units)	14	52.8%	1,465
Renters Spending 30% of Income or More on Rent + Utilities	6	13.9%	385
Renters Spending 50% of Income or More on Rent + Utilities	9	8.0%	223
Homeowners Spending 30% of Income or More on Mortgage + Utilities	27	19.4%	254
Average Energy Costs (as % of Income)	5	1.8%	-
Persons without Vehicle Access	20	7.2%	353

Built Environmental Hazards		
Indicator	Relative Exposure Level	Value
Traffic Exposure	High	-
Potential Lead Paint Exposure (Houses Built pre-1960)	High	66.53%
Cancer Risk from Air Pollution	Very High	-
Respiratory Disease Risk from Air Pollution	Very High	-
Proximity to Water Pollution Sources	High	-
PM2.5 Levels in Air, µg/m3	High	9.71
Ozone Concentration, ppb	Very High	46.74
Diesel Particulate in Air, µg/m3	Very High	1.23
Proximity to Superfund Sites	Very High	-
Proximity to Potentially Toxic Industrial Activity	Moderate	-
Proximity to Hazardous Waste Treatment and Disposal Facilities	High	-

Neighborhood Planning	
Indicator	Description
Community Councils	East Walnut Hills Assembly
Community Development Corporations	Walnut Hills Redevelopment Foundation
Community Plans	Desales Corner Conservation Plan (1985)