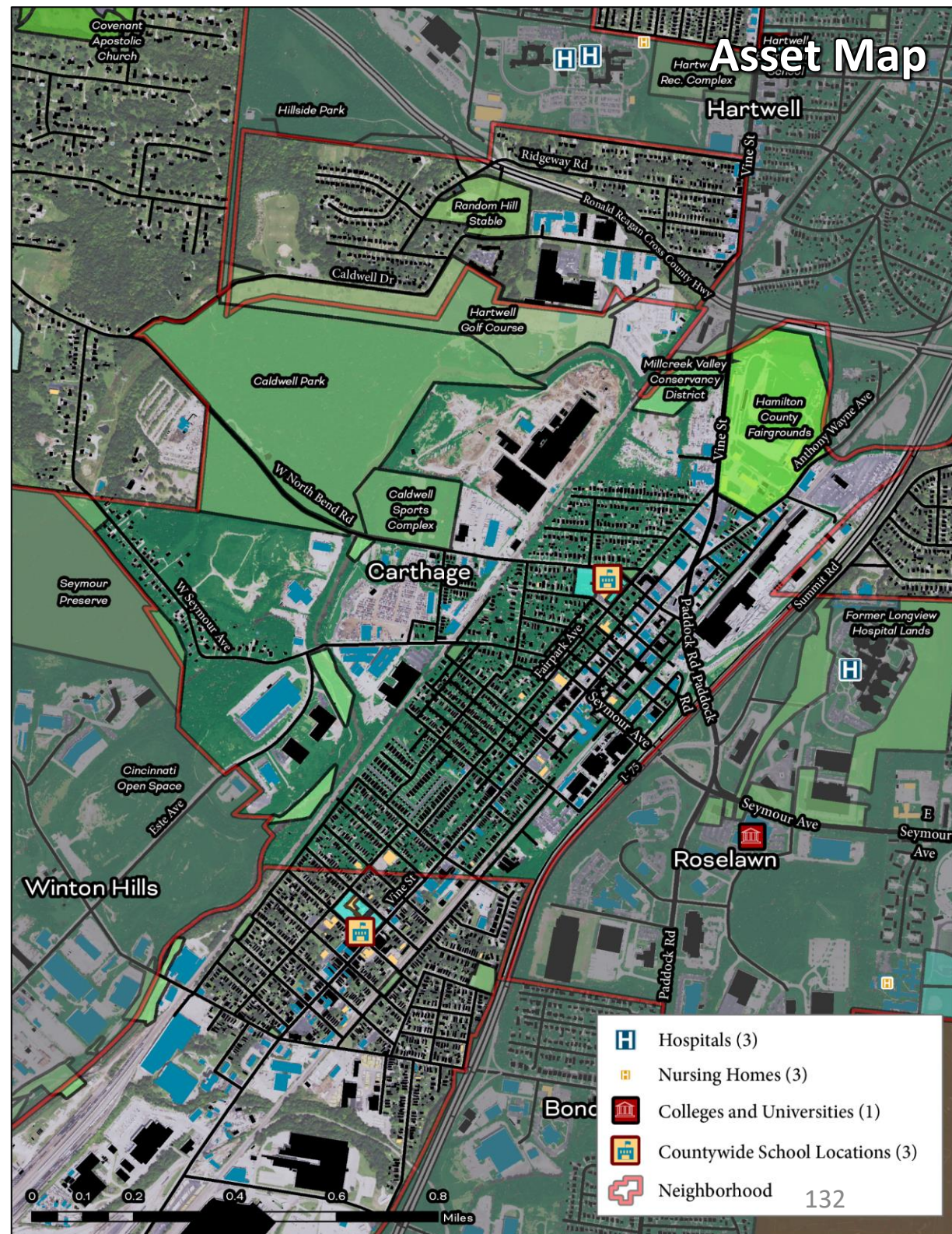


Carthage

Cincinnati Neighborhood Profile

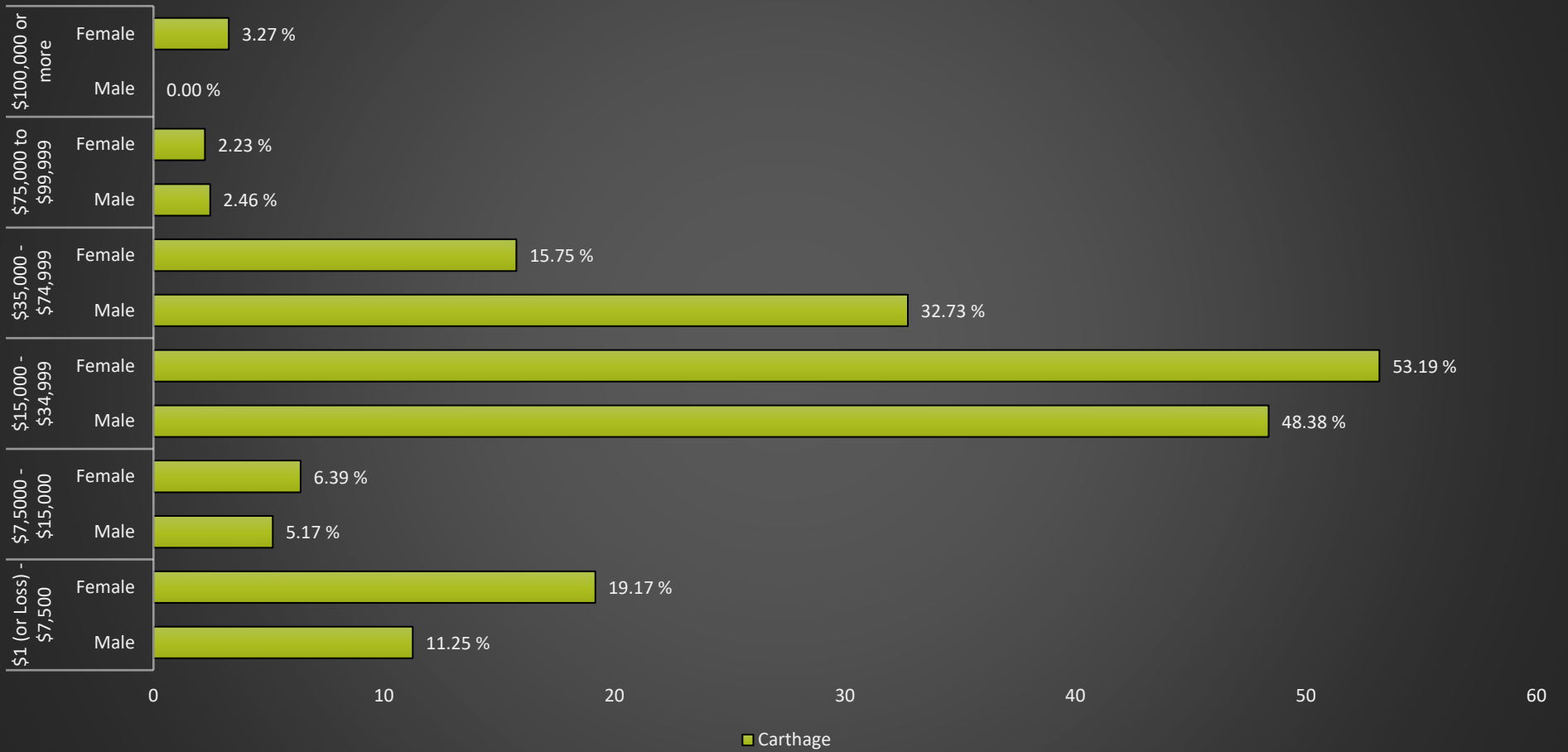
Carthage is a predominantly white neighborhood (47.1%) with 2855 residents. It has active community councils (Carthage Community Council) and a community development corporation (Carthage Civic League). The average life expectancy for the neighborhood is 72.5 (ranking 29th of all communities assessed). Carthage has an “average” prevalence of diabetes (18%), high blood pressure (37.3%), and cancer (5.8%) of all communities assessed, but high levels of heart disease (10.8%). The neighborhood has ~16.4% tree canopy cover (ranked 32nd of all communities assessed), and is ranked 11th among all communities assessed for percent of land in parks and greenspaces (21.2%). Carthage has “good to excellent” access to public transit and “above average” walkability. It has “high” exposure to air toxins that cause cancers and respiratory hazards, “very high” exposure to traffic and to lead paint, and “extreme exposure” to water toxins, PM2.5 levels, and ozone. It also has “extreme” exposure to potentially toxic industrial sites, hazardous waste treatment and disposal sites, and Superfund sites. Carthage ranks 27th of all communities assessed for persons living in poverty (25.8%) and 30th for the number of SNAP recipient households (27.4%).



Carthage

Cincinnati Neighborhood Profile

Carthage: Annual Income by Gender



Carthage Notable Indicators

<i>Persons Living in Poverty</i>	<i>Exposure to Water Toxins, PM2.5 Levels, and Ozone Levels</i>	<i>Proximity to EPA Management Plan Facilities, Hazardous Waste Sites, and National Priority List Sites</i>
25.8% (ranked 27th highest for all communities assessed)	Extreme	Extreme

Carthage

Cincinnati Neighborhood Profile

People			
Indicator	Rank	%	# of Persons
Population	-	-	2,855
Persons over 65	10	8.1%	232
Persons 17 and Under	43	32.6%	931
Children Living w/ Grandparents	47	5.8%	165
Race/Ethnicity:			
Black	-	23.9%	681
white	-	47.1%	1,346
Asian	-	0.0%	-
Other	-	29.0%	828
Latinx	-	30.6%	873
Persons 5 and Older in Households w/ Limited English Ability	48	11.8%	336

Health			
Indicator	Rank	Value	
Life Expectancy	29	72.5 years	-
Disease Prevalence Estimates:			
	Rank of % w/Condition	% with Condition	Persons with Condition
Asthma	26	11.6%	331
Cancer	30	5.8%	167
Diabetes	35	18.0%	514
Heart Disease	43	10.8%	309
High Blood Pressure	29	37.3%	1,066
Kidney Disease	36	4.1%	118
Obesity	29	41.5%	1,183
Lack of Health Insurance	42	18.7%	533
Persons w/ Independent Living Difficulty	17	2.1%	59
Persons Living w/ Disability	15	10.5%	299

Ecosystems and Infrastructure		
Indicator	Rank	Value
Tree Canopy Coverage	32	16.4%
Greenness of Land Surface	25	53.6%
Percent Land in Parks and Greenspaces	11	21.2%
Impervious Surface	33	46%
Heat Island Exposure	38	1.05
Walkability	-	Above Average
Persons w/ Low-Income and Low Food Access	1	0.0%
Transit Accessibility	-	Good to Excellent
Daytime Population vs. Resident Population	16	68.8%
Commuters Leaving Each Day	-	1,213
Commuters Using Public Transit	7	2.1%

Carthage

Cincinnati Neighborhood Profile

Socio-Economic Indicators			
Indicator	Rank	%	#
Persons Living in Poverty	27	25.8%	736
SNAP Recipient Households	30	27.4%	285
Educational Attainment:			
Less than High School	-	15.3%	-
HS or Equivalent	-	23.6%	-
Some College	-	12.0%	-
Associate's Degree	-	3.0%	-
Bachelor's Degree or Higher	-	7.6%	-
Educational Attainment Index	39	0.30	-
Extreme Housing Burdens:			
Renter-Occupied Housing (as % of All Housing Units)	13	52.6%	547
Renters Spending 30% of Income or More on Rent + Utilities	28	29.6%	308
Renters Spending 50% of Income or More on Rent + Utilities	13	9.4%	98
Homeowners Spending 30% of Income or More on Mortgage + Utilities	18	16.7%	82
Average Energy Costs (as % of Income)	34	5.6%	-
Persons without Vehicle Access	12	5.0%	143

Built Environmental Hazards		
Indicator	Relative Exposure Level	Value
Traffic Exposure	Very High	-
Potential Lead Paint Exposure (Houses Built pre-1960)	Very High	78.53%
Cancer Risk from Air Pollution	High	-
Respiratory Disease Risk from Air Pollution	High	-
Proximity to Water Pollution Sources	Extreme	-
PM2.5 Levels in Air, µg/m3	Extreme	9.82
Ozone Concentration, ppb	Extreme	46.89
Diesel Particulate in Air, µg/m3	High	0.82
Proximity to Superfund Sites	Extreme	-
Proximity to Potentially Toxic Industrial Activity	Extreme	-
Proximity to Hazardous Waste Treatment and Disposal Facilities	Extreme	-

Neighborhood Planning	
Indicator	Description
Community Councils	Carthage Community Council
Community Development Corporations	Carthage Civic League
Community Plans	NA