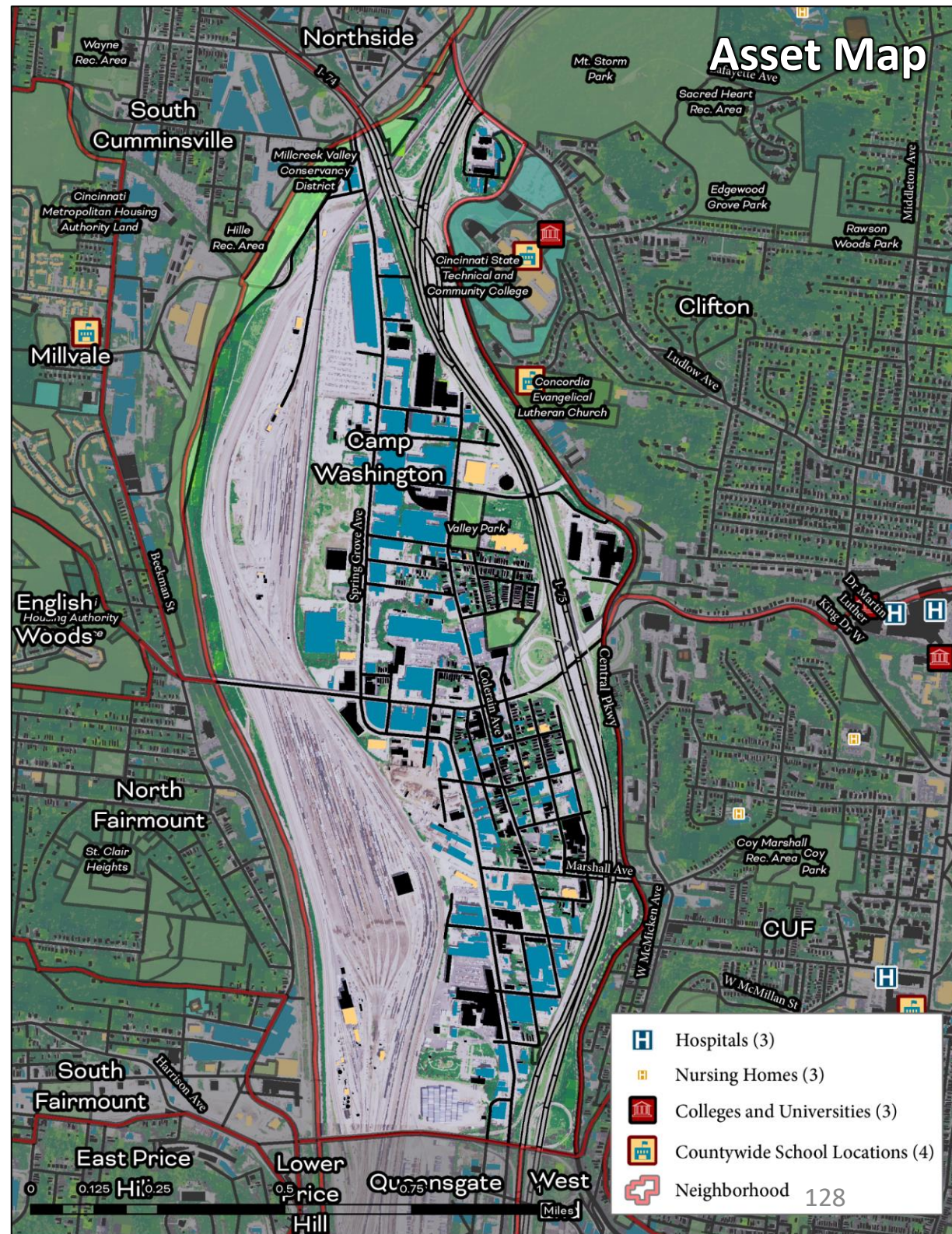


# Camp Washington

## Cincinnati Neighborhood Profile

Camp Washington is a predominantly white neighborhood (68.2%) with 1,394 residents. It has active community councils (Camp Washington Community Council) and a community development corporation (Camp Washington Community Board), and a community plan (Camp Washington Neighborhood Plan (1981)). The average life expectancy for the neighborhood is 67.2 (ranking 43rd of all communities assessed). Camp Washington has a relatively low prevalence of cancer (4%). The neighborhood has 0.7% tree canopy cover (ranked 47th of all communities assessed), and is ranked 49th of all communities assessed for percent of land in parks and greenspaces (1%). Carthage has “excellent” access to public transit and “above average” walkability. It has “extreme” exposure to traffic, air toxins that cause cancers and respiratory hazards, lead paint, PM2.5 levels, diesel particulate matter, and ozone. It also has “extreme” exposure to potentially toxic industrial sites and hazardous waste treatment and disposal sites. It also has “high” exposure to Superfund sites. 22.8% of Camp Washington residents are living in poverty and 62% of residents are renters.

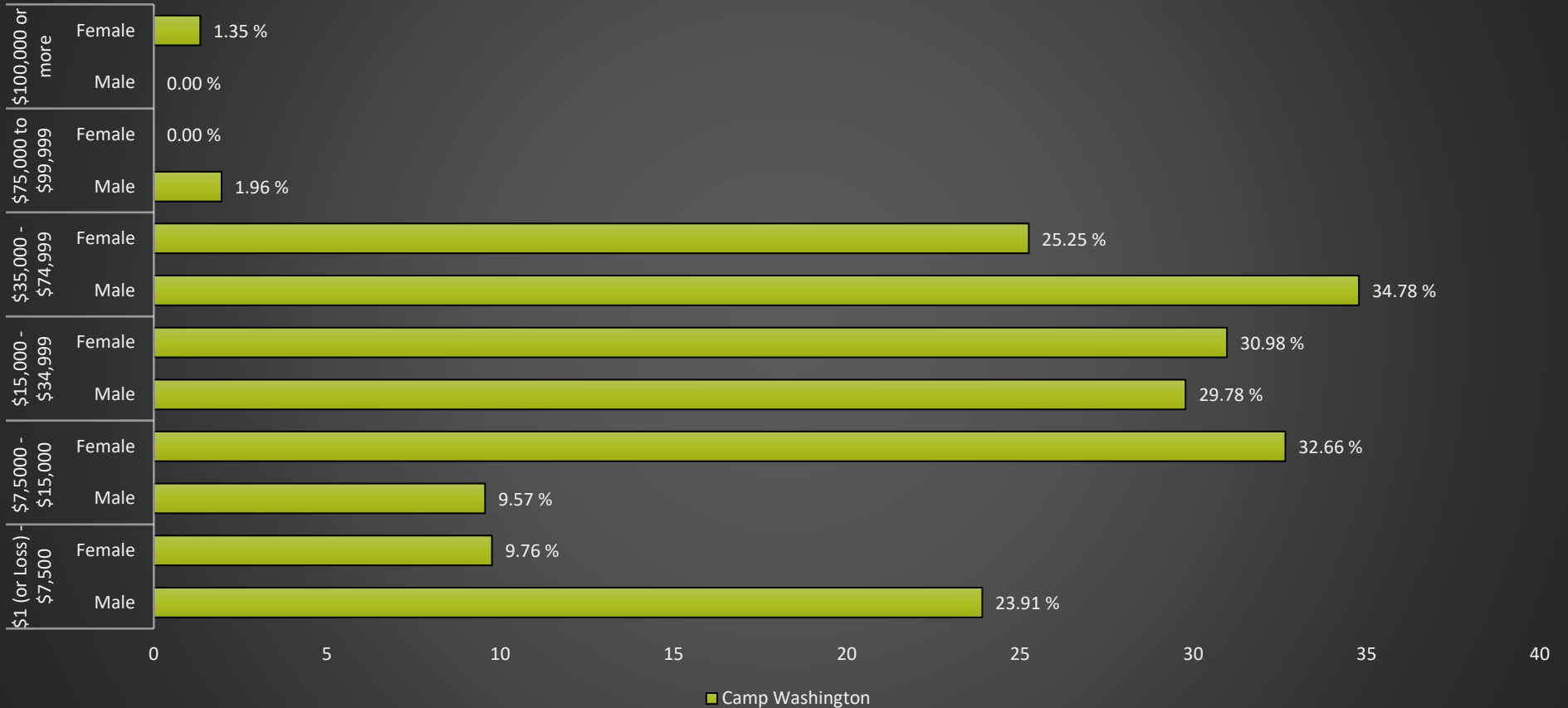




# Camp Washington

## Cincinnati Neighborhood Profile

Camp Washington: Annual Income by Gender



### Camp Washington Notable Indicators

Average Life Expectancy	Exposure to Traffic, Air Toxins That Cause Cancers and Respiratory Hazards, Lead Paint, PM2.5 Levels, Diesel Particulate Matter, and Ozone	Proximity to EPA Management Plan Facilities and Hazardous Waste Sites
67.2 (ranked 43rd for all communities assessed)	Extreme	Extreme

# Camp Washington

## Cincinnati Neighborhood Profile

People			
Indicator	Rank	%	# of Persons
Population	-	-	1,394
Persons over 65	7	6.3%	88
Persons 17 and Under	9	14.8%	206
Children Living w/ Grandparents	38	2.4%	34
Race/Ethnicity:			
Black	-	25.5%	356
white	-	68.1%	950
Asian	-	0.0%	-
Other	-	6.3%	88
Latinx	-	2.3%	32
Persons 5 and Older in Households w/ Limited English Ability	20	0.3%	4

Health			
Indicator	Rank	Value	
Life Expectancy	43	67.2	-
Disease Prevalence Estimates:			
	Rank of % w/Condition	% with Condition	Persons with Condition
Asthma	20	11.1%	155
Cancer	6	4.0%	55
Diabetes	15	11.2%	156
High Blood Pressure	11	30.0%	418
Heart Disease	18	6.3%	87
Kidney Disease	13	2.5%	35
Obesity	18	36.6%	510
Lack of Health Insurance	34	15.7%	219
Persons w/ Independent Living Difficulty	35	3.9%	54
Persons Living w/ Disability	34	16.5%	230

Ecosystems and Infrastructure		
Indicator	Rank	Value
Tree Canopy Coverage	47	0.7%
Greenness of Land Surface	46	16.3%
Percent Land in Parks and Greenspaces	49	1.0%
Impervious Surface	47	77%
Heat Island Exposure	45	1.80
Walkability	-	Above Average
Persons w/ Low-Income and Low Food Access	7	1.9%
Transit Accessibility	-	Excellent
Daytime Population vs. Resident Population	43	404.9%
Commuters Leaving Each Day	-	473
Commuters Using Public Transit	0	0.0%

# Camp Washington

## Cincinnati Neighborhood Profile

Socio-Economic Indicators			
Indicator	Rank	%	#
Persons Living in Poverty	23	22.8%	318
SNAP Recipient Households	32	31.6%	141
Educational Attainment:			
Less than High School	-	20.5%	-
HS or Equivalent	-	24.0%	-
Some College	-	13.8%	-
Associate's Degree	-	3.8%	-
Bachelor's Degree or Higher	-	10.0%	-
Educational Attainment Index	33	0.35	-
Extreme Housing Burdens:			
Renter-Occupied Housing (as % of All Housing Units)	23	62.1%	277
Renters Spending 30% of Income or More on Rent + Utilities	20	24.2%	108
Renters Spending 50% of Income or More on Rent + Utilities	24	13.2%	59
Homeowners Spending 30% of Income or More on Mortgage + Utilities	2	4.7%	8
Average Energy Costs (as % of Income)	38	6.1%	-
Persons without Vehicle Access	16	6.2%	87

Built Environmental Hazards		
Indicator	Relative Exposure Level	Value
Traffic Exposure	Extreme	-
Potential Lead Paint Exposure (Houses Built pre-1960)	Extreme	96.90%
Cancer Risk from Air Pollution	Extreme	-
Respiratory Disease Risk from Air Pollution	Extreme	-
Proximity to Water Pollution Sources	Extreme	-
PM2.5 Levels in Air, µg/m3	Extreme	9.81
Ozone Concentration, ppb	Extreme	46.62
Diesel Particulate in Air, µg/m3	Extreme	1.42
Proximity to Superfund Sites	High	-
Proximity to Potentially Toxic Industrial Activity	Extreme	-
Proximity to Hazardous Waste Treatment and Disposal Facilities	Extreme	-

Neighborhood Planning	
Indicator	Description
Community Councils	Camp Washington Community Council
Community Development Corporations	Camp Washington Community Board
Community Plans	Camp Washington Neighborhood Plan (1981)