

June 29, 2017

FOR YOUR INFORMATION

To: Mayor and Members of Council

From: Harry Black, City Manager **HB**

Subject: CincyInsights: Recycling Participation Dashboard

The Office of Performance and Data Analytics (OPDA) worked with the Office of Environment and Sustainability (OES) to create the newest CincyInsight: Recycling Participation.

The Recycling Participation feature contains two dashboards:

- an overview of neighborhood recycling participation for the past 12 months, and a summary of waste types and tonnage; and
- individual address recycling participation. On this dashboard, users may search by street and ZIP code, and change the date range to see recycling participation data as far back as January 2016.

The new feature may be found by visiting the [CincyInsights](#) homepage and clicking on “Thriving & Healthy Neighborhoods.” All filters are fully interactive, and neighborhood recycling participation rates are displayed. Using this map, residents may view both commercial and residential addresses with City of Cincinnati recycling bins, and check for recycling participation over time. A snapshot of the Recycling Participation dashboard is attached below.

The data powering this feature is generated by RFID technology, which enables the City to track each time a City-issued recycling bin is lifted. This “cart lift” count data is used to calculate residential recycling participation rates by neighborhood, while also informing strategic outreach to improve recycling participation, reduce Cincinnati’s environmental footprint, and save money on waste removal.

Like other CincyInsights dashboards, the data populating the Recycling Participation dashboards is automatically refreshed daily, providing users with “real-time” information as soon as it’s available (in this case, recycling data is currently updated monthly, although OPDA is working with OES to increase this frequency). All data used to power this dashboard may be found on the City’s [Open Data Portal](#).

As with all CincyInsights dashboards, community feedback is welcome and necessary. A feedback survey is located at the bottom of the Recycling Participation page. Additional CincyInsights will be added over time to reflect citywide activity and community interest.

Background

On December 7, 2016, OPDA launched [CincyInsights](#), the City's interactive Open Data dashboard portal. Currently, the CincyInsights website features 18 interactive data visualization dashboards, ranging from real-time snow plow tracking information to heroin overdoses, customer service requests, and community council information. CincyInsights has been a very successful community engagement tool - receiving national attention and serving as a resource for various City departments and local community groups who report using these dashboards for strategic decision making and outreach. Since its launch six months ago, CincyInsights has averaged more than 10,000 hits per month.

Results Cincy dashboards were launched on June 16, 2017. Results Cincy builds on CincyInsights and OPDA's broader data efforts to find new and creative ways to make City data easily accessible, interactive, and even more user-friendly. Users may quickly see what's happening where they live, and can filter by date range to check how activity has changed over time.

All CincyInsights

[Safer Streets](#)

- Heroin Overdose Responses
- Fire & Rescue Responses
- Emergency Medical Services (EMS) Responses
- Police Calls for Service
- Cincinnati Initiative to Reduce Violence: Shootings & other data

[Growing Economy](#)

- Certified Vendors by ethnicity & vendor category
- Economic Incentives (commercial & residential, by year and neighborhood)

[Thriving and Healthy Neighborhoods](#)

- Recycling Participation
- Greenspace Maintenance
- Private Lot Abatement Program
- Community Council Neighborhoods
- Street Sweeping (Sweeper tracker)
- Trash Collection Routes (Trash vehicle tracker)

[Innovative Government](#)

- Snow Plow Tracker
- Customer Service: Citizen Service Requests

[Fiscal Sustainability and Strategic Investment](#)

- Streets: Potholes
- Streets: Pavement Condition & Street Rehabilitation

[ResultsCincy](#)

- Safer Streets Results Dashboards
- Growing Economy Results Dashboard
- Thriving & Healthy Neighborhoods Results Dashboards
- Innovative Government Results Dashboard
- Fiscal Sustainability & Strategic Investment Results Dashboard

(Note: all ResultsCincy Dashboards are also embedded in strategic priority landing pages)

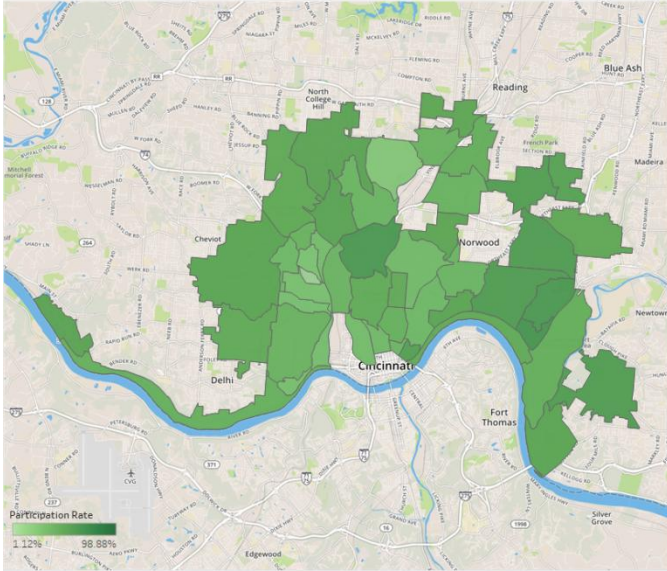
Conclusion

This progress is not possible without your continued commitment and support for the City's data and performance management initiatives.

CincyInsights is about transparency, improved customer service and creating inherent accountability for enhanced, combined performance. These results demonstrate the continued evolution and development of the City's efforts to use data to make Cincinnati the best managed city in the country.

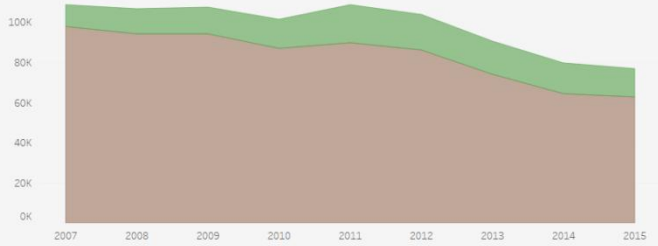
Attachment

Recycling Participation by Neighborhood In the Past 12 Months

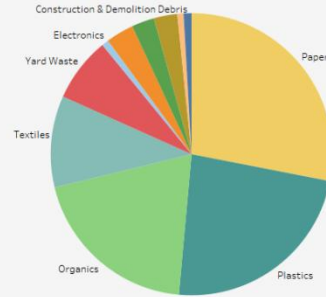


*If a Cincinnati neighborhood is missing from the map, it had a 0% recycling participation rate in the past 12 months

Tons of Recycling and Landfill Waste by Year

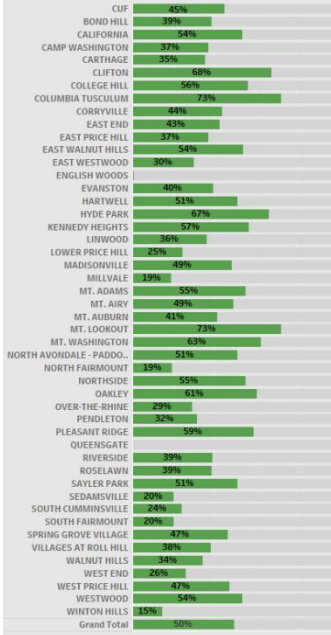


Cincinnati Waste by Type

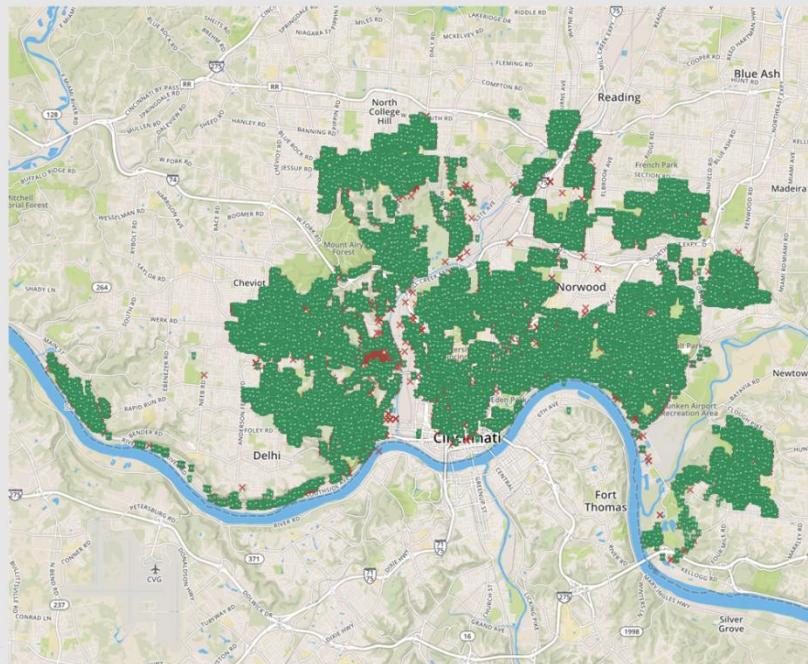


Search by Address: All

Neighborhood Recycling Participation



Zipcode All



Month Multiple values



Recycling Participation?

YES

NO