

## Weather Alerts

The City of Cincinnati follows the Snow Emergency Level system set by the Hamilton County Sheriff's Office:

- **Level 1 - Snow Alert:** Roadways are hazardous with blowing and drifting snow.
- **Level 2 - Snow Advisory:** Roadways are hazardous with blowing and drifting snow. Only necessary travel is advised.
- **Level 3 - Snow Emergency:** All roadways are closed to non-emergency personnel. Travel is prohibited unless absolutely necessary.

## Parking Restrictions

During a Snow Parking Restriction, parking is prohibited on designated snow emergency routes. Citizens are encouraged to park off the street if possible.



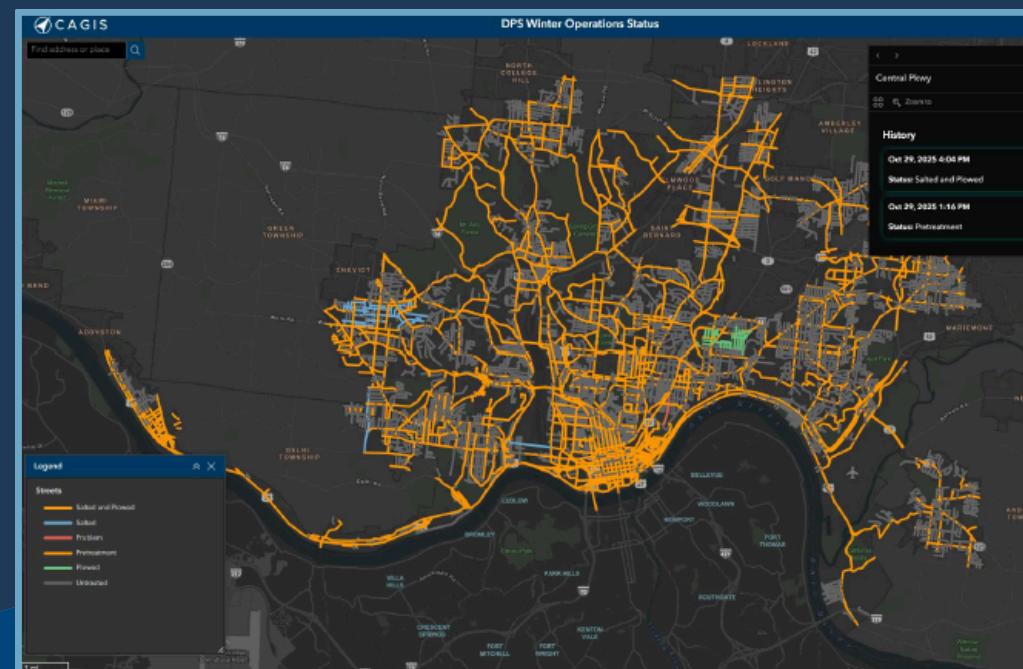
## Snow Plow Tracker

When ice and snow impact the region, Winter Operations keeps Cincinnati moving safely by anti-icing, de-icing, and plowing the streets. During winter weather events, the Department of Public Services (DPS) uses professional weather service data, road condition information, and GPS tracking software to maximize all available resources to develop an optimized operations plan for each winter storm.

To prioritize safety and efficiency, DPS treats streets based on a snow priority route system. Primary routes – including hills, bridges, major thoroughfares, and the downtown business district – are serviced first, followed by collector streets then residential streets.

The interactive map below now provides detailed, street-level service updates. Residents can view:

- When a vehicle serviced a street
- What type of treatment was applied



# WINTER OPERATIONS INFORMATION



DEPARTMENT OF PUBLIC SERVICES

Phone  
311 / 513-765-1212  
Website  
[www.cincinnati-oh.gov](http://www.cincinnati-oh.gov)



Social Media



@311Cincy

## From the Director:

Dear Community Member,

The City of Cincinnati is committed to maintaining safe and accessible streets during the winter season. Your cooperation is essential in achieving this goal. Please review the enclosed winter driving tips and ensure sidewalks are clear of snow and ice to enhance safety for everyone.

City crews treat streets in a systematic fashion, prioritizing heavily traveled roadways, steep hills, bridges, main access routes to hospitals and schools, and transit routes. Citizens can expect to see results 24 hours after the snowfall ends.

Your patience and adherence to winter driving tips will help us manage whatever winter throws our way.

Sincerely,  
Mark A. Riley  
Director of Public Services



## Road Treatment Procedures

### Logistics

Crews and equipment are centrally dispatched from four district salt domes to community routes, hills, bridges. Various vehicles, including pickup trucks, dump trucks, and specialty equipment, are used to maximize efficiency.

### Operations & Technology

Each winter weather event is unique. Media, weather services, and ground temperature sensors are closely monitored to develop strategies for evolving road conditions.

- **Anti-icing:** Focuses on pre-treating roadways to prevent ice formation.
- **De-icing:** Involves cutting through and removing ice from roadways.

Granular salt may be used alone or dissolved in water to form a slurry that dries to form a protective layer on pavement. Additives like Geomelt (beet juice) may be added to brine for effectiveness at lower temperatures.

Plowing is used to remove large amounts of snow.

### Communications

Throughout a winter weather event, the City provides road condition updates via media releases, which are sent to area media outlets and published on the City website. The City also utilizes regular social media updates.

## Winter Driver Tips

### Before You Drive

- Keep your gas tank at least half full.
- Ensure windshield fluid is full.
- Winterize your car: charge the battery and check tire pressure.
- Use de-icer or heat your key to open frozen locks.
- Keep emergency supplies in your vehicle: ice scrapers, blankets, shovels, jumper cables, flares, sand, extra clothing, de-icer, matches, candles, flashlights, cell phone, water, and non-perishable food.
- Listen to weather reports before heading out.

### While on the Road

- Remember bridges and ramps freeze before roads.
- Heavier traveled streets clear faster after salt is applied.
- If stuck, ease or “rock” out of spaces. Spinning tires digs deeper.
- Keep a safe distance of 50 feet from snow removal equipment.
- It takes longer to stop on wet or icy roads.
- When skidding, steer in the direction you want to go — do not slam on the brakes.
- Slow down!

