

*Cincinnati Board of Park Commissioners*

**Board Meeting Agenda**

**August 19, 2021**

**9:00 AM**

**Virtual Meeting**

**Order of Business**



**I. Call to Order**

**A. Public Comments**

**B. Approval of July 15, 2021 Meeting Minutes\***

**II. Police Report**

**III. Action Items**

**A. Clifton Dog Park\***

**Kara Kish, Director**

**B. Easements**

**Cindy France, Principal Architect**

**1) Cincinnati Bell at Avon Woods & Ault Park\***

**2) Duke Energy at Cincinnati Art Museum\***

**C. Grant Application & Acceptance**

**Crystal Courtney, Division Manager**

**1) Bloomberg Philanthropies Grant – BioChar Facility\***

**D. Contracts for Approval – Prismatic Exhibit\***

**Mary Unterreiner, Executive Assistant**

**E. In-Kind Contributions\***

**Patricia Thompson, Senior Accountant**

**IV. Discussion**

**A. Presentation: Green Team End of Season Re-cap Crystal Courtney, Division Manager**

**V. Staff Comments**

**VI. Commissioner Comments**

**VII. Next Regular Meeting Date: September 16, 2021**

**VIII. Adjournment\***

**BOARD OF PARK COMMISSIONERS**  
**July 15, 2021**

**CALL TO ORDER**

A meeting of the Cincinnati Board of Park Commissioners was held on this day at 950 Eden Park Drive. Commissioners present: President Jim Goetz, Vice President Linda Lee Thomas, Commissioner Susan Castellini, Commissioner Brad Lindner. Commissioner Molly North was in attendance via video conference. President Goetz called the meeting to order at 9:01 A.M.

**Acknowledgement of Public Comments**

President Goetz acknowledged receipt of emailed public comments and there were no speakers registered to give comments in person or over video conference.

**Approval of June 17, 2021 Meeting Minutes**

Commissioner Castellini motioned to approve the June 17, 2021 meeting minutes. Commissioner Lindner seconded. The motion passed by unanimous roll call vote.

**ACTION ITEMS**

**Rule 25 – Swings, Hammocks, & Slacklines**

Director Kish introduced the suggested rule change and introduced Crystal Courtney to present. Crystal Courtney noted an observed increase in hammock use throughout the parks and explained the current *CPB Rule 25 – Swings*, prohibits use of hammocks outside of designated areas, which have never been determined. She explained the rule was difficult to enforce for this reason and described staff’s methods for researching and determining updates to the rule, which would allow for safe use of hammocks on healthy trees. She described the guidelines for hammocks set within the revised *Rule 25 – Swings, Hammocks, and Slacklines*.

Details of permitted use of hammocks was discussed. Commissioner Castellini expressed opposition to the use of hammocks on public property due to concerns over safety and ability to enforce. Ms. Courtney explained the safety considerations within the revised Rule 25 and plans for public and staff education. Director Kish commented on the plans for public education in the form of signage and videos.

Vice President Thomas asked if it was reasonable for Parks to identify specific areas for hammock use. In response, Ms. Courtney considered staff resources, limitations on passive recreation, and potential liabilities associated with Parks designating areas for hammock use.

President Goetz asked how this revised rule measures up to other parks districts’ policies. Ms. Courtney answered Parks’ policy is very similar to Great Parks’ and at the state level, there are not many regulations for hammock guidance. Ms. Courtney explained a main force in creating the guidelines was recent use of hammocks in the Ault Park cherry tree grove. She described methods for following up on the success of the revised rule. Commissioner Lindner expressed the need to communicate potential risks of hammocking and hazard trees in the public education campaign.

The inclusion of swings in the revised rule was clarified.

Commissioner Lindner motioned to approve the staff recommendation. President Goetz seconded.

Vice President Thomas asked how public education will be made available. Ms. Courtney explained signage will include basic regulations and include a QR code for an online educational video.

The motion passed by roll call vote. Commissioners Goetz, Thomas, Lindner, and North voted in favor. Commissioner Castellini voted in opposition.

### **FY22 Budgets: Capital – Recommended Parks’ Infrastructure Rehabilitation Budget Adjustment**

Director Kish summarized the four items comprising the budget presentation.

Ms. Kish presented background on the need to approve a revised allocation of Parks’ Infrastructure Rehabilitation (CIP) budget for FY22, as the Council-appropriated amount is less than the Board’s request. She presented the staff-recommended budget and projects recommended for external funding sources.

President Goetz clarified points of discussion and the budget attachment, beginning the discussion with proposed CIP spending. He reminded the Board the presented budget represents intended spending of the appropriation and does not imply approval of each line-item project. Mr. Goetz expressed appreciation for staff’s approach and consideration of Infrastructure Study needs.

President Goetz motioned to approve allocation in the budget as outlined in Attachment B, presented by staff, for proposed CIP spending.

There was clarification on general categories within the recommended budget.

Commissioner Lindner seconded the motion on the floor. The motion passed by unanimous roll call vote.

Director Kish explained the next item for discussion would relate to proposed Commissioners Fund spending and the source of that spending. President Goetz asked how these items are put in perspective with Fleet needs. Director Kish clarified this focuses on items previously approved in the Capital budget and recommends other funding sources.

### **FY22 Budgets: Commissioners Fund – Recommended Operational Budget**

President Goetz suggested discussing the Commissioners Fund. He explained Director Kish was asked to consider what operational and capital needs should be funded from the Commissioners Fund.

Director Kish presented the staff's recommendation for the Operational Budget for the Commissioners Fund. She explained the total FY22 operational budget of \$1,922,815 was approximately a quarter of a million dollar increase from the previous year and it addresses some of the Board's requests. She identified large-ticket items contributing to the increase. She described ways the budget has changed and improved in structure and implementation.

President Goetz noted the differences in the presented FY21 Operations Budget and FY21 Adjusted Budget, noting increases in professional services due to Parks Foundation funds for Lot 23/28. He asked for clarification on the major increase in Equipment, Supplies, and Horticulture Supplies from FY21 to FY22. Ms. Mobley explained these expenses include small equipment, plant material, and other supplies to support new florist staff and other staff in their daily work.

Vice President Thomas asked about plans to improve versus add floral beds. Ms. Mobley explained focus would be on improving the quality and maintaining existing beds with operational funds.

Trail improvements were discussed, and Commissioner North expressed need to understand how much the \$500,000 budgeted for comprehensive trail signage would provide. She expressed it would be helpful to understand broad expectations for the trail system, and a vision for a clean, safe, well-marked trail system and online accessibility of information.

President Goetz commented on the growth of the Commissioners Fund from investment accounts and noted about \$600,000 of available funding. He expressed spending this available funding continues to be a focus and is happy to see proposed spending from the Commissioners Fund. He commented on the \$1.9 million of operational needs not provided by the City's allocation.

President Goetz asked if there was a motion for approving the FY22 Commissioners Fund operations budget of \$1,922,815. Commissioner Castellini motioned to approve. Vice President Thomas seconded. President Goetz confirmed the Board's understanding of the motion. The motion passed by unanimous roll call vote.

### **FY22 Budgets: Commissioners Fund – Consideration of Capital Expenses**

President Goetz introduced the need to discuss capital expense recommendations from the Commissioners Fund or City restricted funds. Director Kish provided an overview of available resources and staff-recommended capital expenses, which are largely operational in nature.

Ms. Kish commented on comprehensive trail signage and addressed Commissioner North's previous comments. She explained Parks' Trail Technician is currently using GIS to evaluate the trail system and data should be collected by September, which will be mapped and inform signage needs, cost estimates, and be available online.

Opportunities for expenses from the Commissioners Fund was discussed. President Goetz commented the staff-recommended capital project presented by staff would be considered and prioritized in the 3-year strategic plan and asked if there were recommendations for priority projects to be addressed immediately. Vice President Thomas expressed Krohn Conservatory would be a top

priority since the proposed repair work addresses safety. Director Kish agreed and explained the recommended source of funding is a restricted fund for Krohn.

Commissioner Castellini asked if all proposed Fleet purchases were needed today. President Goetz asked about money budgeted in FY21 for Fleet and Ms. Mobley explained vehicles budgeted for in FY21 are still not in service, and that dollar amount is not represented in the FY22 Commissioners Fund capital expense recommendation. She described the desperate need for vehicles and how the Fleet situation is impacting operations and morale. President Goetz commented allocated city funds are not enough to keep Parks' Fleet operational, expressed the need for additional vehicles for staff to do their jobs, and suggested asking City Council for reimbursement from any excess funds in the FY21 budget.

Commissioner Lindner asked if Parks' Fleet is generally underfunded. Ms. Mobley described the decrease in City funding since 2017 and the City's priority of first responder vehicles.

President Goetz commented one of the Park Board's responsibilities is making the City aware of needs. He expressed the recommendation for trail signage was a worthy expense and trails signage was discussed. Mr. Goetz suggested a presentation from staff regarding plans for signage in the future. He commented the needs recommended for Krohn Conservatory would also be needed. Director Kish explained with a little investment for Mt. Airy Arboretum, it could be revitalized in a very meaningful way. Mr. Goetz suggested not making decisions on funding a dog park until a decision is made. Proposed Commissioners Fund spending for Bettman HVAC was discussed.

President Goetz motioned to approve the items recommended for Proposed CF Spending totaling \$162,500 as well as the following Commissioners Fund Capital Expense Recommendations: \$724,000 for Fleet; \$500,000 for Trail Signage; \$25,000 for Mt. Airy Arboretum; and \$258,000 for repairs to Krohn Conservatory. Commissioner Lindner seconded.

Commissioner North asked how new Capital expenses are treated in the budget. Director Kish expressed an approach has not been established, but this can be addressed in the strategic planning process. Ms. North expressed a need for a proactive approach. President Goetz agreed and expressed the Board can also approve allocations as items come up and felt some items presented today were being funded proactively. Commissioner Lindner expressed the same for Mt. Airy Arboretum revitalization.

The motion on the floor passed by unanimous roll call vote.

Director Kish and President Goetz introduced the staff recommendation to approve the use of restricted City funds for projects requested but not included in the City allocation.

Vice President Thomas asked about the parking lot restoration at Sawyer Point and why it has not been included in the recommended budget. Director Kish explained there will be opportunity in the next few months to discuss plans for that area more holistically.

President Goetz asked about the estimated \$100,000 cost of the Mt. Airy bike skills area and ADA walkway. Director Kish explained the estimate. Mr. Goetz expressed comfort with the additional proposed other spending and funding sources.

President Goetz motioned to approve the items recommended for Proposed Other Spending totaling \$410,000. Vice President Thomas seconded. The motion passed by unanimous roll call vote.

Director Kish thanked the Board for their support and for the additional investment in the Parks system and staff. President Goetz expressed appreciation for staff's recommendations, which allowed the Board to approve funding for meaningful items.

### **FY 22 Budgets: Capital – City-Issued Capital Projects**

Director Kish introduced the next item related to additional capital dollars appropriated by City Council, and staff's recommendation on expenditure of those funds.

President Goetz asked about \$750,000 for a trail system masterplan and clarified the actual masterplan would be estimated at \$75,000, and the cost of design and build would be the remaining \$675,000. He also referenced the \$150,000 for trails from Rapid Run to Dunham, which is new natural-surface trail, different from the larger paved trail project.

Director Kish explained the summary staff recommended expenditures are intended to provide accountability because of the vague nature of the City-Issued Capital Project allocation.

Commissioner Castellini asked about the Sawyer Point Tennis Courts Improvement and Director Kish clarified it is related to Pickleball Courts and seismic studies, which will inform a formal project recommendation.

President Goetz expressed his perspective that staff is looking for support of the recommendation from a budgetary standpoint, but the Board is not approving specific projects yet.

Commissioner North noted an opportunity for a marathon trail at Mt. Airy within the masterplan for the 30-mile trail redevelopment, which could be promoted and be a regional draw. President Goetz asked that the idea for a marathon trail be part of stakeholder discussions about trails in Mt. Airy.

The differences between the City-issued \$1,050,000 for Mt. Airy Trail Expansion and the "Proposed Other Spending" of \$100,000 for Area 23 bike skills area and ADA walkway were discussed.

President Goetz motioned to approve the staff recommended budget allocation. Commissioner Lindner seconded. The motion passed by unanimous roll call vote.

President Goetz expressed appreciation for everyone's hard work on the budget.

## **DISCUSSION**

### **Clifton Dog Park Discussion**

Director Kish provided an overview of the discussion regarding a dog park in the Clifton community. She provided a staff summary of the project to-date and a description of seven viable sites. She referred to a graphic displaying the criteria including size, site fit, neighborhood, parking, proximity to homes, and access to water. She expressed the goal of the discussion was to narrow the list down to two or three sites allowing staff to create prototypes at each, collect feedback, and produce a recommendation to the Board next month.

President Goetz expressed appreciation for the work on the project. He commented the presented graphic includes subjective evaluations.

Commissioner North commented she had visited and studied each proposed site and concluded the Northeast Corner of Burnet Woods site was most appropriate. She presented her reasoning for wanting to elevate this site for consideration.

There was discussion regarding desirable site criteria, including water access, and significance of site location being central within Clifton.

Vice President Thomas expressed concern regarding the aesthetics of a dog park at Losantiville Triangle and commented MLK is her preferred site if water access can be made available. She also commented Dunore Park would not be a consideration from her perspective.

President Goetz commented he had visited the sites and expressed the MLK site did not appear favorable in person due to its size, access, topography, busy street, and users' inability to utilize the Good Samaritan parking lot adjacent to the site due to planned construction by Good Samaritan. The size, usable space, and topography of the site was discussed.

Commissioner Castellini commented on the number of comments received in opposition versus feedback in favor of a particular site. President Goetz echoed this sentiment, sharing a comment from a member of Clifton Town Meeting & Preserve Burnet Woods regarding messages of opposition to development in Clifton parks. He shared his opinions on the value of a dog park in Clifton and for the Park Board to be proactive as opposed to reactive.

Commissioner Lindner expressed his opinion on the benefits of the Burnet Woods Northeast Corner, including its central location and size. Commissioner Castellini expressed the Burnet Woods Northeast corner was a standout and staff should focus on it. The other Burnet Woods sites were discussed.

President Goetz expressed there is a clear standout site and there may not be a need to select a "Plan B."

Director Kish commented on the work that went into the narrowing down of sites by both staff and Board. She suggested including the project at the Northeast Corner site in the strategic plan and

identify funding at that point. President Goetz expressed the project timeline should not be extended further. He asked to move forward with staking the site and engaging the community for support and fundraising, then bringing a proposal with costs to the Board. There was discussion regarding getting cost estimates for water access and concepts for design and materials.

Vice President Thomas asked what immediate next steps were needed for useful discussion with the community. Director Kish explained now that there is consensus for an ideal site, staff can determine cost estimates and simultaneously invite qualitative feedback, and bring a proposal back to the Board next month. Commissioner Lindner expressed there may not be additional or differing feedback from the community. There was discussion about presenting a staff recommendation and concept to the community and inviting them to respond and assist with the project.

Commissioner North clarified next steps and including a concept and conceptual budget, identifying the Park Board's contribution, and what additional funding would be needed from other sources. She also expressed a need to understand the cost of ongoing maintenance.

Director Kish expressed at the August meeting, staff could present a report with information on what it would take to construct and maintain a dog park at the Northeast Corner of Burnet Woods. President Goetz expressed the Board is now looking for community input on the specifics of the project at this site, not on the site selection. There was discussion about preparing various proposals for different sizes and costs. It was clarified staff would deliver in August an estimate for a 20,000 square foot dog park with options for smaller, site concepts, and any barriers and costs for bringing water to the site. There was discussion about whether to notify project stakeholders that other sites were no longer considered, and it was determined this information would be reflected in the meeting minutes.

### **Capital Improvement Plan (CIP) Quarterly Update**

Director Kish presented the Capital Improvement Plan Quarterly Update which is maintained by the Division of Planning & Design and is intended to capture the status of current projects and expenditures within the CIP.

Commissioner Castellini asked for an update on the Boat Dock and Director Kish explained it is still under consideration by the Purchasing Department. The need to address timing issues and identify opportunities for improving the relationship with Purchasing and revisiting the MOU with the City was discussed. President Goetz expressed there is great interest in completing the Boat Dock and it may be a good time to revisit the MOU between Parks, the City, and the Parks Foundation to look for opportunities for improvement. Expectations were set for a staff proposal at the August meeting for improving the working relationship with Purchasing, as well as meeting with the City Administration and Parks Foundation regarding the MOU.

President Goetz provided feedback on the CIP report, providing suggestions for improvement and outlining inconsistencies in funding reports. He suggested reporting on the project budget, amount of funding received, expenditures, and remaining dollars for each project. He asked those figures be provided for Tom Jones Commons by next month.

Vice President Thomas commented on the monthly CIP narrative and CIP spreadsheet are not always consistent with one another. She requested more detailed next steps be provided in each update. Director Kish commented improvements will be made to the CIP report.

Commissioner Lindner asked about the inclinometers at Friendship Park. Director Kish expressed other City departments have been engaged as the ground movement will make any future projects at that site a much larger endeavor.

Commissioner Lindner commented given the community interest in Owl's Nest Pavilion and the Clifton Dog Park, there may be opportunity for fundraising. Vice President Thomas asked for an update on the Sawyer Point Fishing Pier but Planning & Design staff were not present to provide.

### **STAFF COMMENTS**

Rocky Merz presented updates from staff. He explained all staff have resumed on-site or in-office work. He directed the Commissioners to the list of upcoming events on the provided calendar. He announced registration for ReLeaf, sponsored by Mad Tree, the Parks Foundation, and Macy's will begin in August. He explained the goal of 1,750 trees and the new priority registration for neighborhoods with lower tree canopy, based on the 2020 UTC data. Plans for announcing and distributing registration information was discussed.

Mr. Merz thanked Vice President Thomas for speaking at the Marian Spencer Statue dedication and recognized Parks staff Sarah Moskovitz and DeAndre Davis for documenting the project over the past year and creating a video. He announced the upcoming Tom Jones Commons ribbon cutting on July 23<sup>rd</sup>.

Mr. Merz explained July is Parks and Recreation Month and staff asked park patrons and staff to share their Parks and Recreation stories. He shared one of the stories, recounting how Parks staff teamed up to search Smale Riverfront Park to find a young child's lost baseball glove. Vice President Thomas commended the work and impact of the CEV Division in collecting and sharing these stories.

### **COMMISSIONER COMMENTS**

Commissioner Castellini asked about the Federal lobbyists. Director Kish provided an update, explaining there had been an advancement in the acquisition of USACE funding, which has not yet been appropriated, but was submitted through Senator Brown's office for Western Hills Viaduct and the River's Edge and is going through the budget process. She explained this is a top priority for the City and a focus of the City's lobbyist.

Commissioner North asked about the frequency of police reports at Park Board meetings and reporting on the response to the shooting incident occurring on July 4<sup>th</sup> at Smale. Jenny Mobley clarified the report is quarterly, however, Captain Swingley had a scheduling conflict this month. Ms. North asked for an update regarding safety at Smale Riverfront Park. Director Kish explained there had not been police resources for sustained efforts at Smale, however, this has shifted since the shootings on July 4<sup>th</sup>. She explained Parks is installing cameras that CPD will have access to

and CPD will distribute parking cones (provided by Parks) Fridays-Sundays as well as increased police patrols. She explained efforts of Parks staff and CPD are focused on other parks as well. Commissioner North asked that opportunities for the Board to support safety efforts be brought to their attention moving forward.

Commissioner Lindner commended the staff for their work on the budget development. He thanked Commissioner North for visiting the dog park site options to help focus the discussion.

**EXECUTIVE SESSION**

President Goetz motioned to enter into Executive Session pursuant to Ohio Revised Code Section 121.22 (G) to consider the employment, discipline, and compensation of a public employee. Commissioner Lindner seconded. The motion passed by unanimous roll call vote.

President Goetz explained he anticipated the meeting will adjourn and there will be no further action when the Board reenters the public meeting after Executive Session.

The Board entered into Executive Session at 11:25 A.M.

The Board reentered the public meeting at 12:45 P.M.

**ADJOURNMENT**

Commissioner Castellini motioned to adjourn. President Goetz seconded. The meeting adjourned at 12:45 P.M.

ATTEST:

\_\_\_\_\_  
PRESIDENT

\_\_\_\_\_  
DIRECTOR



BOARD OF PARK

COMMISSIONERS

Date: August 19, 2021

To: Board of Park Commissioners

From: Kara Kish, Director

Subject: Potential Dog Park Site in Burnet Woods

James Goetz  
*President*

Linda Lee Thomas  
*Vice President*

Brad Lindner

Susan F. Castellini

Molly North

Kara S. Kish  
*Director*

Jenny Mobley  
*Deputy Director*

Crystal Courtney  
*Division Manager*

Rocky Merz  
*Division Manager*

Steven L. Schuckman  
*Division Manager*

Craig Sherman  
*Division Manager*

**Background**

At the July 15th Board of Park Commissioners meeting, the Board considered and discussed Staff's presentation of potentially viable dog park locations to serve the Clifton community. The Board came to a consensus that their preferred site for consideration was the Northeast corner of Burnet Woods. Further, they sought a better understanding of the optimal footprint(s), concepts, surfaces, cost estimates, water access, maintenance needs and natural environment impacts and asked Staff to do additional research for presentation and discussion at the August 19<sup>th</sup> Park Board meeting. This information has been developed and is being presented for consideration.

This represents the culmination of an extensive engagement and fact-finding effort by the Park Board and Staff over the last 18 months in response to interest from the Clifton community about developing a dog park in the area. As you are aware, a [Cincinnati Parks survey](#) conducted this spring about the potential for a dog park at Dunore Park attracted 850 responses of whom 52% vs. 43% indicated an interest in creating a dog park.

This engagement process has included direct engagement with individuals and community organizations, public notification of Park Board meetings with distribution of meeting materials, surveys and general comments received by the Board and Staff. This feedback and process has been quite valuable in helping to advance this conversation. As this process continues, Staff welcomes and appreciates continued input and engagement from all individuals and organizations.

**Site Description**

The site at the southeast corner of Brookline and Ludlow Avenues consists primarily of a sloping, bowl-shaped open lawn area flanked by hillsides and trees. Staff has developed alternatives for surfacing the site and for boundaries of the dog park, all of which impact cost.

950 Eden Park Drive  
Cincinnati, Ohio 45202  
Phone (513) 352-2604  
Fax (513) 352-4096  
[www.cincinnatiiparks.com](http://www.cincinnatiiparks.com)  
#cincyparks

The basic features would include surfacing material, a five-foot high perimeter fence with entry gates, benches, and water service for a drinking fountain and site cleaning.

## **Surfacing**

The surfacing choice is an important component of any dog park, and a number of alternatives exist. These range from a natural lawn treatment to wood chips, stone, crushed rock or decomposed granite, concrete, or specially manufactured artificial turf products. There are advantages and disadvantages with each approach. Choices are dependent on performance, cost, maintenance, and site suitability.

Reviewing the experiences at other dog parks and consulting best practices, wood chips and crushed stone are not considered suitable due to deterioration of wood chips, dampness supporting biological growth, difficulty in seeing and picking up dog feces and retention of odors in stone, wood, or rubber chips. Also, some dogs may ingest wood chips.

The identified surface options to consider at Burnet Woods are natural, concrete or an artificial turf product made specifically for dog parks. Due to the small size of the site and the likely high usage, a natural surface would result very quickly in a grassless site of dirt and mud. This would not be advisable due to the wear and tear on the site and the resulting unsightliness.

A concrete surface, similar to what is at the dog parks in Washington Park and Westwood Town Hall would alleviate the problems of an all-natural site. A dog park artificial turf surface would accomplish the same goals as a concrete site but has the added advantage of being softer, greener, and most important, offering a permeable drained surface. The turf is put down over a base of stone aggregate and has fixed edges. It has a 15-year warranty, comes with antibacterial treatment and is cheaper than concrete.

## **Layout**

In order to preserve the tree cover adjacent to the open lawn and avoid the hillsides on both sides of the site, the proposed layout would establish the dog park within the open lawn area. The entrance would be a double-gated vestibule next to the sidewalk on Brookline. This layout avoids containing the large trees within the dog park, sparing heavy compaction around their roots, while maintaining a vegetative canopy along Ludlow Avenue. This also preserves the tree cover, screening the site from the condominium building just to the east. None of the options discussed below will result in the loss of any existing trees.

Fence placement options would determine the size of the dog park and is an important factor in cost since fencing and surfacing prices are dependent upon size and layout. Three options are proposed for consideration, all of which encompass a smaller area for small dogs (See attached).

## Cost Estimate

	<b>A (10,000 sf)</b>	<b>B (15,000 sf)</b>	<b>C (19,000 sf)</b>
<b>Fencing/Gates</b>	\$20,000	\$25,000	\$30,000
<b>Turf Surfacing Installed</b>	\$119,000	\$178,500	\$226,000
<b>Water</b>	\$87,500	\$87,500	\$87,500
<b>Concrete</b>	\$8,800	\$8,800	\$8,800
<b>Benches</b>	\$8,000	\$8,000	\$8,000
<b>Subtotal</b>	\$233,300	\$307,300	\$360,300
<b>10% Contingency</b>	\$23,330	\$30,730	\$36,030
<b>Total Cost</b>	\$256,630	\$338,030	\$396,330
<b>Cost/Sq. Ft.</b>	\$25.66	\$22.54	\$20.86

## Considerations

Though cost is a major consideration in determining a preferred option, this should also be weighed against how much use the dog park would likely have to avoid overcrowding issues. The artificial turf product is preferred due to its durability and permeability thereby minimizing maintenance responsibilities to daily pickup of trash and occasional spray washing.

For comparison purposes, the Westwood Town Hall Dog Park is 7,200 sf and the Washington Park Dog Park is 9,000 sf. Both are fenced, have water on site and are primarily concrete surfaces. Westwood cost \$27/sf. Washington Park cost \$56/sf. Mt. Airy and Armleder dog parks are natural surfaces but are much larger consisting of several acres each.

An annual estimate for maintaining this space is approximately \$15,000, which includes a part-time employee (\$12,750) providing string trimming around the fence, graffiti removal, spraying off the surface weekly, removing the trash (supply cost \$500) and refilling the dog bags (\$2,000).

## Funding

Staff has previously identified and presented the Board the potential use of \$150,000 of Commissioner's Funds for construction of a Clifton area dog park. Additional funding to construct the park could come from further use of Commissioner's funds, grants, private giving, private fundraising, sponsorship/naming rights, the capital improvement fund, or some combination.

Further, it may be worth exploring partnerships with local interested parties such as the Clifton PUPP, who have expressed strong interest in assisting efforts to develop a dog park or to raise funds for the construction and/or maintenance of one.

While none of the Park Board's current dog parks charge for use, it is worth noting some charge a daily fee for or paid memberships generating money to help off-set maintenance costs. Below is a sampling of some public dog parks and their fees.

<b>Name</b>	<b>Daily</b>	<b>Annual</b>
Wood County, OH Dog Shelter	None	\$40/Full \$30/Partial
Williamsburg, VA	\$2	\$27/Resident \$62/Non-Resident
Cary Park, IL	None	\$55/Resident \$110/Non-Resident
Kenosha County, WI	\$2/Resident \$5/Non-Resident	\$20/Resident \$25/Non-Resident

## **Conclusion**

Staff is seeking Board discussion and direction to determine whether further development of the NE corner of Burnet Woods as a dog park serving the Clifton community should proceed.

Attachment A—NE Burnet Woods Site

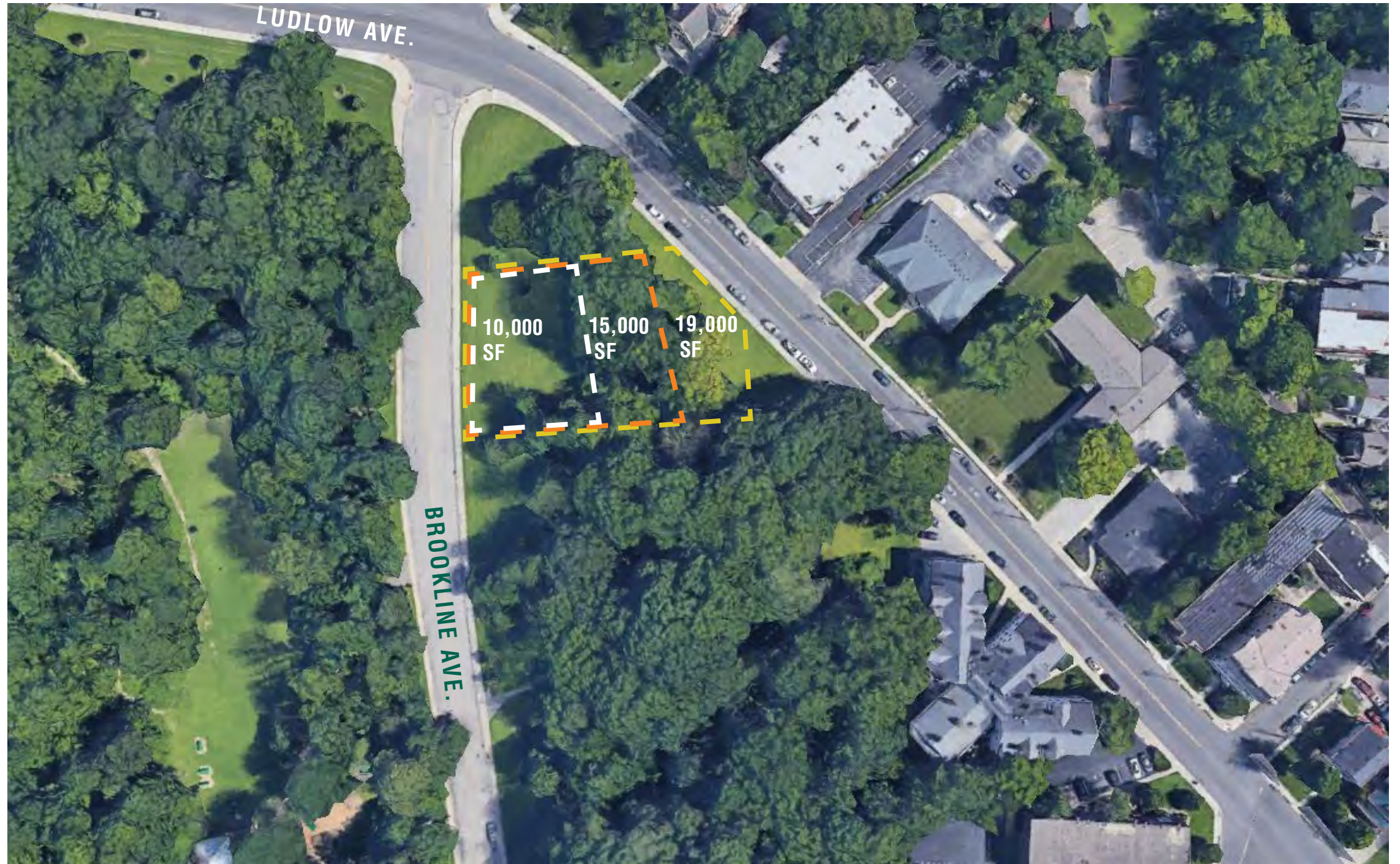
Attachment B—NE Burnet Woods Dog Park Layout Options

# PROPOSED SITE | NE BURNET WOODS

Option A: 10K SF 

Option B: 15K SF 

Option C: 19K SF 



# OPTION A | 10,000 SF



# OPTION B | 15,000 SF



# OPTION C | 19,000 SF





**BOARD OF PARK**

**COMMISSIONERS**

James Goetz  
*President*

Linda Lee Thomas  
*Vice President*

Brad Lindner

Susan F. Castellini

Molly North

Date: August 19, 2021

To: Board of Park Commissioners

From: Cindy France, Principal Architect *KSK*

Subject: Avon Woods and Ault Park Easements

---

**Background**

In FY21, Parks received grants for the installation of Wi-Fi at Avon Woods Nature Center and Ault Park Pavilion. For Wi-Fi to be installed, Cincinnati Bell will need to run fiber lines to the facilities, requiring an easement at Ault Park and Avon Woods.

**Description**

Cincinnati Bell is requesting an easement which will cover the pathway of the fiber lines for Ault Park Pavilion and Avon Woods. Each path was reviewed on-site with Cincinnati Bell, Parks' Natural Resources, Parks' Planning, and CRC (Avon Woods) to determine the least impactful path to prevent damage to trees and operations. Parks staff will coordinate with CRC staff so there is minimal impact to CRC's golf reservations at Avon Woods. The easement will allow Cincinnati Bell to install the line and enable them to provide any maintenance which may be necessary in the future.

**Findings**

The easement requested is minor and will not interfere with any uses in the park.

**Recommendation:**

Staff respectfully requests the Board approve granting an easement to Cincinnati Bell for the above-described work.

**Attachment A—Fiber Line Pathways**

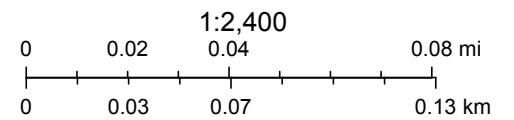
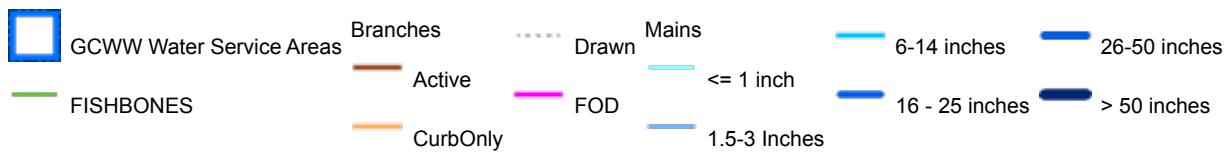
# Avon Woods



# Ault Park



6/29/2021, 3:11:48 PM





BOARD OF PARK

COMMISSIONERS

Brad Lindner  
*President*

James Goetz  
*Vice President*

Susan F. Castellini

Kevin Flynn

Linda Lee Thomas

Kara S. Kish  
*Director*

Steven L. Schuckman  
*Division Manager*

Craig Sherman  
*Division Manager*

Rocky Merz  
*Division Manager*

Jenny Mobley  
*Division Manager*

Lawrence Parker  
*Division Manager*

Date: August 19, 2021

To: Board of Park Commissioners

From: Cindy France, Principal Architect *KSK*

Subject: Eden Park Easement for Duke Energy

---

**Background**

The Cincinnati Art Museum is in the midst of a significant renovation to reorient their main vehicular entrance off of Eden Park Drive. The new driveway plan was approved by the Park Board in concept at the November 17, 2016 meeting. As part of the work, a gas line which feeds the Art Museum will need to be rerouted across park property and therefore requires an Easement. The Board is being asked to approve issuing an Easement to Duke Energy Ohio, Inc. to allow installation of the new gas line and for future maintenance as required.

**Description**

Duke Energy Ohio, Inc. is requesting an Easement which will cover a 10' wide path from Art Museum Drive to the Cincinnati Art Museum. The entire Easement area is located on Park Board property. The easement will enable this company to install the line and enable them to provide any maintenance which may be necessary in the future.

**Findings**

The Easement requested is minor and will not interfere with any uses in the park or future plans for Eden Park. Duke Energy Ohio, Inc. is responsible for paying any legal fees required for the Easement and will pay the appraised value of the easement which has not yet been determined.

**Recommendation:**

Staff respectfully requests the Board approve granting an Easement to Duke Energy Ohio, Inc. for the above-described work.

950 Eden Park Drive  
Cincinnati, Ohio 45202  
Phone (513) 352-2604  
Fax (513) 352-4096  
www.cincinnatiiparks.com  
#cincyparks





BOARD OF PARK

COMMISSIONERS

James Goetz  
*President*

Linda Lee Thomas  
*Vice President*

Susan F. Castellini

Brad Lindner

Molly North

Date: August 19, 2021  
To: Board of Park Commissioners  
From: Crystal Courtney, Division Manager *KSK*  
Subject: Grant Application/Acceptance—Bloomberg Biochar Grant

---

**Background**

In March 2021, Cincinnati Parks Division of Natural Resources partnered with the City's Office of Environmental Sustainability (OES) and the University of Cincinnati (UC), to submit a proposal to Bloomberg Philanthropies to participate in the Mayors Challenge: Biochar Replication Project. The purpose of this project was to conduct a feasibility study for implementation of a biochar facility for the City of Cincinnati. Much to our surprise, Cincinnati was one of only ten cities in the world chosen to participate.

Kara S. Kish  
*Director*

Jenny Mobley  
*Deputy Director*

Crystal Courtney  
*Division Manager*

Rocky Merz  
*Division Manager*

Steven L. Schuckman  
*Division Manager*

Craig Sherman  
*Division Manager*

Over the past four months a stakeholder group from the city has worked with Bloomberg Philanthropies and the City of Stockholm (Sweden) to develop a plan for the production of our own biochar from wood waste produced by Parks. The next round of this project is to submit a grant application to Bloomberg Philanthropies detailing our implementation plan and requesting match funding to bring this vision to life.

**Description**

Biochar is a supplemental planting product that is incorporated into the soil of new tree plantings and landscape beds to increase the water and nutrient holding capacity of the soil. Biochar is produced utilizing woodchips and plant waste that is run through a pyrolysis machine. The organic material is pulled into this machine and is heated to expel the moisture organic compounds leaving behind the carbanionic structure of the plant material, in the form of char. The char is incorporated into compost material, charging the carbonic structure with nutrients that plants need to grow. The final product is added to soil improving the growth rate and health of trees and plants by locking up the nutrients and water near the root structure. If incorporated into our operation, all wood waste would be processed through the pyrolysis machine turning wood chips into biochar, and essentially closing the loop on carbon stored by our urban forest as it is incorporated back into the soil.

950 Eden Park Drive  
Cincinnati, Ohio 45202  
Phone (513) 352-2604  
Fax (513) 352-4096  
www.cincinnatiiparks.com  
#cincyparks

The stakeholder group for this project is made up of the Division Manager of Natural Resources, two city staff from the OES, a professor from UC whose research is focused on carbon sequestration and measurement, and a biochar industry professional. This team has begun the planning for how to make this project come to life, starting with identification of the best machine to produce biochar based upon Parks' current needs, with the ability to scale up to take on wood chips from local tree companies to turn this operation into a revenue generating opportunity that would be used to pay for the operation and maintenance of the facility.

Beyond this, we have begun to identify park sites where the machine could be placed and operated, with review from Park's Planning, Operations and Facility Maintenance teams. The best site identified is in Mt. Airy Park, at the dead end of Diehl Road, where Park staff currently dump woodchips and logs. This area of the park was once the Civilian Conservation Corps headquarters. It is currently inactive, set back away from residential properties, and has the necessary utilities on site (water and electricity) to further explore implementation.

As noted, the next step in this project is to present an implementation plan to Bloomberg Philanthropies, seeking match funding and continued guidance on installation, operation, and building community support for this transformative project. The Bloomberg Philanthropies grant will be issued to the ten selected cities in mid-August and is due by the end of September. If approved the team would have two years to implement.

Beyond the implementation plan, the stake holder group has identified and began pursuing match funds from the Hamilton County Solid Waste Policy Board, MSD, SMU, the Ohio EPA, the Greater Cincinnati Foundation, and private companies. Staff is requesting the potential allocation of \$100,000 from Compensatory Fund 428. This fund has a current balance of \$248,341.38 and is restricted to be utilized for the Urban Forest Management Program.

### **Recommendation**

Staff respectfully requests the Board approve application and acceptance of grant funds made to the Bloomberg Philanthropies in the amount up to \$400,000 and the allocation of match funds in the amount of \$100,000 from the Urban Forestry Compensatory Fund (428) for the implementation of this project.



**BOARD OF PARK  
COMMISSIONERS**

- Brad Lindner  
*President*
- James Goetz  
*Vice President*
- Susan F. Castellini
- Linda Lee Thomas
- Molly North

Date: August 19, 2021

To: Board of Park Commissioners

From: Mary Unterreiner, Executive Assistant *KSK*

Subject: Contracts and Agreements for Approval

**Background**

The Board has established guidelines for items requiring their review, including contracts over \$50,000 or agreements with terms exceeding 12 months.

**Contracts over \$50k**

The project below has an Installation Rental Agreement exceeding \$50k, and is ready to proceed:

- Kara S. Kish  
*Director*
- Jenny Mobley  
*Deputy Director*
- Crystal Courtney  
*Division Manager*
- Rocky Merz  
*Division Manager*
- Steven L. Schuckman  
*Division Manager*
- Craig Sherman  
*Division Manager*

- **Prismatica Exhibit at Krohn Conservatory** – \$119,357.14  
Prismatica is a unique exhibit of colorful, 7.5' tall prisms which will be the focal point of the Krohn Conservatory's 2022 Summer/Fall Show: The Science of Color. The addition of Prismatica, the most popular exhibit by Creos, to the annual floral exhibit will be a new event for the city of Cincinnati; it has never been experienced in this area. The one-of-a-kind display is typically featured in large international cities around the world, and is available for Cincinnati in 2022. This exhibit will attract a great deal of attention from the regional population, leading to financial contributions to our local economy and a stronger artistic relevance for the city.

\$59,678.56 (50%) will be due at the time of signature, to be funded out of Fund 430. The remaining balance will be paid in installments according to the schedule within the agreement (Attachment A).

**Recommendation**

Staff respectfully requests the Board approve the presented agreement.

Attachment A—Installation Rental Agreement with Creos  
Attachment B—The Science of Color and Prismatica Exhibit Concept

## INSTALLATION RENTAL AGREEMENT

BETWEEN:

**CREOS EXPERTS-CONSEILS INC**, a corporation duly incorporated under the laws of the Province of Québec, Canada, having its principal place of business at, 1-1375, rue des Marie-Victorin, Saint-Bruno-de-Montarville, Québec, J3V 6B7, hereinafter represented by **Benoît Lemieux**, a duly authorised representative as he so declares;

(Hereinafter called "Creos")

AND:

**CITY OF CINCINNATI, ON BEHALF OF THE CINCINNATI PARK BOARD**, having its principal place of business at 950 Eden Park Dr, Cincinnati OH 45202 US;

(Hereinafter called "Client")

(Creos and Client hereinafter called the "Parties")

**WHEREAS Partenariat du Quartier des spectacles** owns the installation entitled **Prismatica** (the "Installation") and has allowed Creos to rent and produce said Installation to third parties outside of Montreal;

**WHEREAS Krohn Conservatory** has expressed to Creos its interest in renting and presenting the Installation in **Cincinnati** from **July 2, 2022 until October 16, 2022**, and that Creos has accepted;

**IN CONSIDERATION** of the above recitals, the mutual covenants contained herein, and other good and valuable consideration, the receipt and sufficiency of which are hereby acknowledged, the Parties agree as follows:

### 1. OBJECT AND DATE OF COMING INTO FORCE

- 1.1. The preamble and the annexes form an integral part of this agreement (the "Agreement").
- 1.2. The Parties undertake to provide their respective services, expertise, products in order to produce in collaboration the Installation at **Krohn Conservatory - Cincinnati**, in order for it to be presented from **July 2, 2022 until October 16, 2022**, in accordance with the project description included

in Appendix A to this Agreement and with the project schedule included in Appendix C.

## 2. BUDGET AND FINANCIAL STRUCTURE

- 2.1. Unless indicated otherwise, all monetary sums are in US dollars.
- 2.2. All monetary sums are calculated based on the exchange rate  
1USD=1.2102CAD
- 2.3. As compensation for the rental and the presentation of the Installation in **Cincinnati**, Client will pay to CREOS upon presentation of invoice, the sum of **one hundred and nineteen thousand, three hundred and fifty-seven dollars fourteen cents (US\$119,357.14 + applicable taxes)** in accordance with the following schedule:
- 2.3.1. **Fifty-nine thousand, six hundred and seventy-eight dollars fifty-six cents (US\$59,678.56)**, (plus applicable taxes), representing **fifty percent (50%)** of the total compensation, on the date of signature of this Agreement;
- 2.3.2. **Twenty-nine thousand, eight hundred and thirty-nine dollars twenty-nine cents (US\$29,839.29)** (plus applicable taxes), representing **twenty-five percent (25%)** of the total compensation, on **July 2, 2022**.
- 2.3.3. **Twenty-nine thousand, eight hundred and thirty-nine dollars twenty-nine cents (US\$29,839.29)** (plus applicable taxes), representing **twenty-five percent (25%)** of the total compensation, on **October 16, 2022**.

The invoices shall be payable by bank transfer in the bank account of Creos.

<b>Transit number</b>	<b>13231</b>
<b>Institution (Banque Nationale du Canada)</b>	<b>006</b>
<b>Account</b>	<b>0030468</b>
<b>Swift Code</b>	<b>BNDCCAMMINT</b>

Client certifies that no sum will be withheld for any amount due as per this Agreement.

- 2.4. All transportation costs are final and based on a delivery from Monday to Friday between 8am and 5pm. If there are any additional fees due to external

circumstances outside of Creos control and its transportation company, all fees will be charged to the Client.

- 2.5. In addition to the Budget, Client will also pay the costs of the elements described in Appendix D hereof.
- 2.6. The Parties agrees that any financial participation to the presentation of the Installation at **Krohn Conservatory - Cincinnati** by any individual, corporation, public or private organisation, is subject to the prior written approval of the Parties.

### **3. PRESENTATION OF THE INSTALLATION**

- 3.1. Each Party will designate in writing a person responsible to make all decisions for said Party.
- 3.2. Client undertakes to approve the different milestones of the project within five (5) business days following submission by Creos in person or by e-mail.

### **4. CREOS OBLIGATIONS**

Subject to Client abiding by its obligations as per this Agreement, Creos undertakes to

- 4.1. Organise the preparation, transport, set up and disassembly of the Installation on the site;
- 4.2. Provide necessary equipment and material, technical services and human resources to produce the Installation as indicated in Appendix A;
- 4.3. Make the necessary adjustments to the Installation for its presentation at the Site, in consultation with Client;
- 4.4. Coordinate the production team, ensure the follow-up and respect of the Budget, prepare and transmit the project reports determined by the Parties;
- 4.5. Respect the project schedule as described in Appendix C (the « Production Schedule »);
- 4.6. Determine, in consultation with Client, the credits to be attributed in relation with the Installation.
- 4.7. Ensure maintenance of the Installation during the event according to the schedule agreed by both Parties, or upon express request from the Client in case of technical dysfunction of the Installation.

## 5. CLIENT OBLIGATIONS

Client undertakes to:

- 5.1. Provide necessary equipment and material:
  - 5.1.1. Electrical source as detailed in Appendix A;
  - 5.1.2. Manpower as detailed in Appendix D;
  - 5.1.3. Public and equipment security items as stated in Appendix D;
  - 5.1.4. Necessary permits and authorisations;
  - 5.1.5. Handling equipment as described in Appendix A;
  - 5.1.6. Operate and store the Installation as indicated in Appendix A hereof;
- 5.2. Collaborate with Creos in the production of the Installation;
- 5.3. Ensure to Creos access to **Krohn Conservatory – Cincinnati** for the production of the Installation, and ensure the secure guard and control of the Installation during production, installation, presentation and storage phases;
- 5.4. Client shall obtain and maintain the minimum insurance coverages set forth below. By requiring such minimum insurance, Creos shall not be deemed or construed to have assessed the risk that may be applicable to Client under this Agreement. Client shall assess its own risks and if it deems appropriate and/or prudent, maintain higher limits and/or broader coverages. Client is not relieved of any liability or other obligations assumed or pursuant to the Agreement by reason of its failure to obtain or maintain insurance in sufficient amounts, duration, or types.
  - 5.4.1. Coverages
    - Commercial General Liability – Coverage to include:
      - Premises and Operations
      - Personal Injury/Advertising Injury
      - Products/Completed Operations
    - Property Insurance – Including:
      - Property of Others or Rented Property
  - 5.4.2. Limits Required
    - Client shall carry the following limits of liability:
  - 5.4.3. Commercial General Liability
    - Products/Completed Operations Aggregate   \$2,000,000
    - Each Occurrence Limit \$2,000,000
    - Personal/Advertising Injury       \$2,000,000
  - 5.4.4. Property Insurance

All Risks at replacement cost Full replacement cost value of the  
"Installation"

Client shall name Creos, **Partenariat du Quartier des spectacles**, and their respective officers, employees, agents, and volunteers as Additional Insureds. Such insurance may not be cancelled during the term of this Agreement unless thirty (30) days advance written notice via certified mail is provided to Creos. However, should Client be self-insured, then it shall inform Creos of such status prior to Installation being delivered to Client. Finally, should Client contract an insurance policy from a third party insurance provider during the rental period, such insurance policy shall meet with the minimum coverages provided herein.

## 6. INTELLECTUAL PROPERTY

- 6.1. Subject to Client abiding by all its obligations as per this Agreement, Client is only permitted to physically exhibit the Installation at **Krohn Conservatory - Cincinnati** from **July 2, 2022 until October 16, 2022**. Client shall not assign, convey, sublicense, or transfer this right to exhibit the Installation. Except as expressly permitted by this Agreement, Client shall have no right to alter, modify, or create derivative works of the Installation.
- 6.2. Subject to Client abiding by all its obligations as per this Agreement, including the requirements to identify **RAW design** as the artist, Client shall have for an unlimited period of time starting on **July 2, 2022** a limited, non-exclusive right, with no right to sublicense, to make copy, license and distribute images and recordings of the Installation as displayed at **Krohn Conservatory - Cincinnati** from **July 2, 2022 until October 16, 2022** throughout all media analog, digital, and through any technology now known or hereafter devised, for promotional purposes (and not for any commercial purpose) only in connection with the presentation of the Installation at **Krohn Conservatory - Cincinnati** from **July 2, 2022 until October 16, 2022**. For clarity, any sale or exchange of such images, video, or recordings in exchange for compensation, monetary or otherwise, shall be deemed a commercial purpose.

## 7. CREDITS

- 7.1. The following long credits must appear on the website/landing page and in all media relations documents (press releases, conferences, radio interviews, etc.):

Name of Installation: Prismatic  
Owner: Quartier des Spectacles Partnership  
Creator: RAW design

Collaborators: ATOMIC3, DIX au carré, Jean-François Piché  
Tour Producer: Creos

If available, the logos of the creator/s and owner/s may also be provided upon request.

All such uses must be subject to the prior written consent of Creos' communications team at [communications@creos.io](mailto:communications@creos.io).

- 7.2. The following short credits must appear on all public mentions of the Installation (posters, programs, social networks, etc.):

Name of Installation: Prismatica  
Owner: Quartier des Spectacles Partnership  
Creator: RAW design

- 7.3. The Client shall place the signage provided by Creos near the Installation on site.

Should the Client prefer to produce their own signage for the Installation, they must include the following elements:

Name of Installation: Prismatica  
Description of Installation (provided in the Presskit)  
Creator: RAW design  
Owner: Quartier des Spectacles Partnership  
Tour Producer: Creos  
Operating instructions and safety rules (if applicable)

If available, the logos of the creator/s and owner/s may also be provided upon request.

All signage is subject to the prior written agreement of Creos' communications team.

- 7.4. The Client undertakes to follow Creos' instructions pertaining to all Installation credits, including without limitation credit dimensions and position.

## **8. REPRESENTATIONS AND WARRANTIES**

- 8.1. Each Party warrants that it has the necessary authority to sign the present Agreement.
- 8.2. Each Party warrants that it has the capacity to exercise the required rights to conclude and execute the present Agreement.

- 8.3. Each Party warrants that it is not the object of any claim, legal action, or other litigation in a court of justice or other organisation of competent jurisdiction in Canada or elsewhere in the world, that may negatively affect the production, presentation, and exploitation of the Installation.
- 8.4. Each Party warrants that it is not party to any agreement that may be in conflict with its obligations as per this Agreement.
- 8.5. All transactions contemplated in this Agreement must abide by federal and provincial laws and regulations, including without limitation applicable sales taxes.
- 8.6. The present Section 8 shall remain in force after the expiration or termination of this Agreement for any reason.

## **9. EXPIRATION AND TERMINATION OF THE AGREEMENT**

- 9.1. A Party may terminate this Agreement effective upon written notice to the other Party if the other Party has breached any material obligation under this Agreement, or any of its representations or warranties under this Agreement are inaccurate in any material respect, and such breach or inaccuracy is not cured within thirty (30) days after written notice of such breach is provided by the non-breaching Party to the breaching Party. Upon any termination, all licenses granted hereunder shall terminate, and Creos shall take possession of the Installation.
- 9.2. In case of termination of this Agreement for any reason, Client will forthwith pay Creos all sums due as per this Agreement and reimburse all sums engaged by Creos.
- 9.3. In case of termination of this Agreement due to COVID-19 prior the event, Client will be allowed to:
  - 9.3.1. Postpone this Agreement to 2021 without penalty except a potential adjustment of transportation fees.
  - 9.3.2. Cancel the presentation immediately upon payment of a pre-established cancellation fees. The cancellations fees represent the addition of the Artwork item as well as the Administration items that can be found in the Budget (see Appendix B)
- 9.4. For clarity, in case of termination due to COVID-19 during the event, Client will forthwith pay Creos all sums due as per this Agreement and reimburse all sums engaged by Creos.

## **10. ASSIGNMENT TO A THIRD PARTY**

- 10.1. No Party may assign this Agreement without the prior written approval of the other Party.



- 12.4. In case the Parties do not find an amicable settlement through said mediation, said dispute will be subject to the Courts of the jurisdiction of Hamilton County, Ohio.
- 12.5. This Agreement, including its appendices, constitutes the entire agreement between the Parties, and supersedes all prior proposals, agreements, and other communications, written or oral, relating to the subject matter hereof and thereof.
- 12.6. No supplement, modification or amendment of this Agreement shall be binding against a Party, unless executed in writing by a duly authorized representative of such Party.
- 12.7. The Parties undertake to execute all documents useful or necessary to the full execution of this Agreement.
- 12.8. This Agreement may be executed in two or more counterparts, each of which shall be deemed an original and all of which shall constitute one instrument in two or more counterparts, each of which shall be deemed an original and all of which shall constitute one instrument. This Agreement may be executed and transmitted by fax or e-mail (in pdf format); it will have the same force and effect as if it had been signed by the Parties simultaneously. The signatures on said faxed or e-mailed copy are considered as original signatures.
- 12.9. Nothing herein shall be construed to create a joint venture or partnership between the Parties hereto or an employee/employer relationship. Neither Party hereto shall have any express or implied right or authority to assume or create any obligations on behalf of or in the name of the other Party or to bind the other Party to any contract, agreement or undertaking with any third party.

IN WITNESS WHEREOF, the Parties have signed this Agreement on \_\_\_\_\_

**CITY OF CINCINNATI**

**CREOS**

Paula Boggs Muething, City Manager

\_\_\_\_\_  
**Benoît Lemieux**  
**CEO**

RECOMMENDED BY:

\_\_\_\_\_  
Kara Kish, Director of Parks

APPROVED BY DEPARTMENT OF ECONOMIC  
INCLUSION

\_\_\_\_\_  
Director

APPROVED AS TO FORM:

\_\_\_\_\_  
Assistant City Solicitor

CITY PURCHASING APPROVAL:

\_\_\_\_\_  
Bobbi Hageman, Chief Procurement Officer

CERTIFICATION OF FUNDS:

Date: \_\_\_\_\_

Funding: \_\_\_\_\_

Amount: \_\_\_\_\_

\_\_\_\_\_  
Karen Alder, Acting Finance Director

## **LIST OF APPENDICES**

### **Appendix A**

Specifications of the Installation and required equipment

### **Appendix B**

Budget

### **Appendix C**

Production Schedule

### **Appendix D**

Manpower and security requests

### **Appendix E**

Excise Tax Act

# Appendix A

## Specifications of the Installation and required equipment

# *PRISMATICA*



**Lugano**  
**Credit : LAC - Lugano Arte e Cultura**

# DESCRIPTION OF THE ARTWORK

**Name:** Prismatica

**Type:** Interactive light installation

**Location:** Outdoors / Indoors

## Description:

A modern ice palace. Prismatica turns heads with the countless colourful reflections made by its giant prisms. Visitors can walk among them to see city life in every colour of the spectrum, and turn the prisms to make the colours dance. After sunset, the enormous interactive kaleidoscope's illusory effects reach a crescendo.

Prismatica is a participatory installation comprising 25 pivoting prisms more than two meters tall. Each one is made of panels covered with a dichroic film that reflects the colours of the rainbow, varying with the light source and viewing angle. Each prism is mounted on a base containing a projector that gives the installation a new dimension after nightfall.



**Canal Convergence, Scottsdale**  
**Credit : Andrew Pielage, courtesy of Scottsdale Public Art**

# TEAM

<b>Concept and execution</b>	Raw Design in collaboration with Atomic3
<b>Sound design</b>	DIX au carré
<b>Lighting design</b>	ATOMIC3 and Jean-François Piché
<b>Production</b>	Quartier des Spectacles Partnership
<b>Tour Producer</b>	Creos
<b>Tour Director</b>	Régis Proulx (regis.proulx@creos.io)

# LOGISTICS AND OPERATION

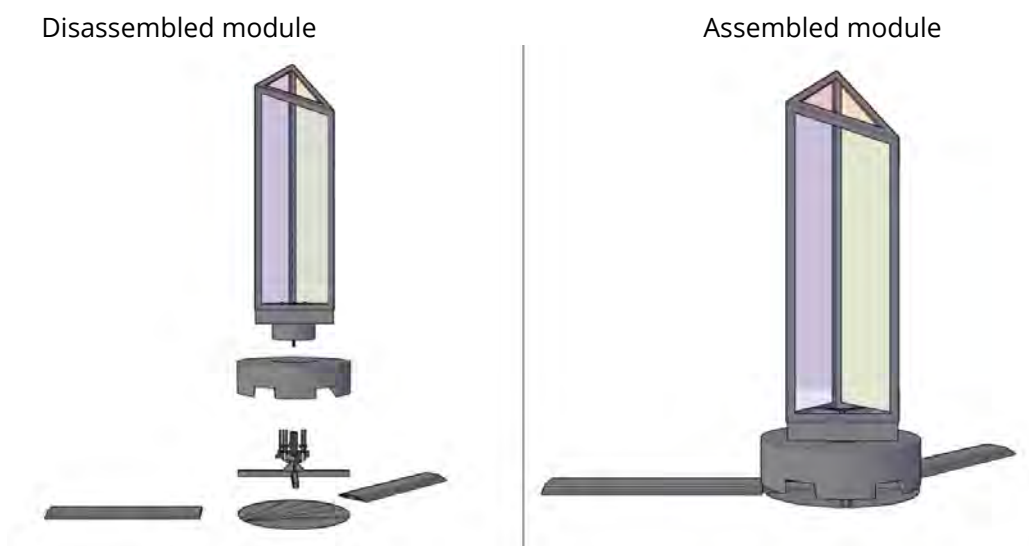
## MODULE DESCRIPTION

Prisms are held upright by the weight of a donut-shaped concrete base. The prisms are free-standing, swiveling and backlit

Quantity:	25
Base weight:	615 pounds / 280 kilos
Prism weight:	105 pounds / 48 kilos
Total weight / unit:	720 pounds / 328 kilos

## MODULE FOOTPRINT

Each module: 3 feet long (1 meter) x 3 feet wide (1 meter) x 7.5 feet high (2.5 meters)



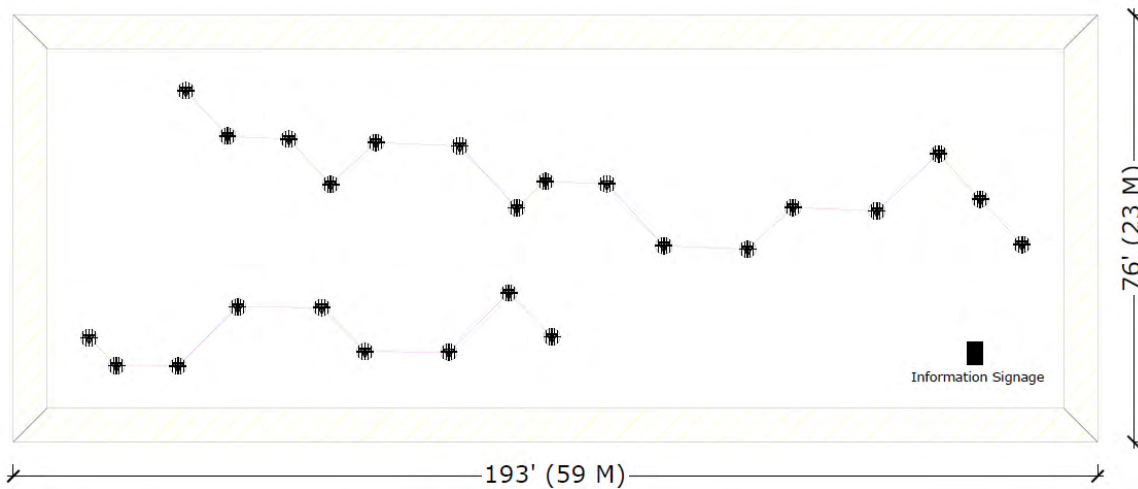
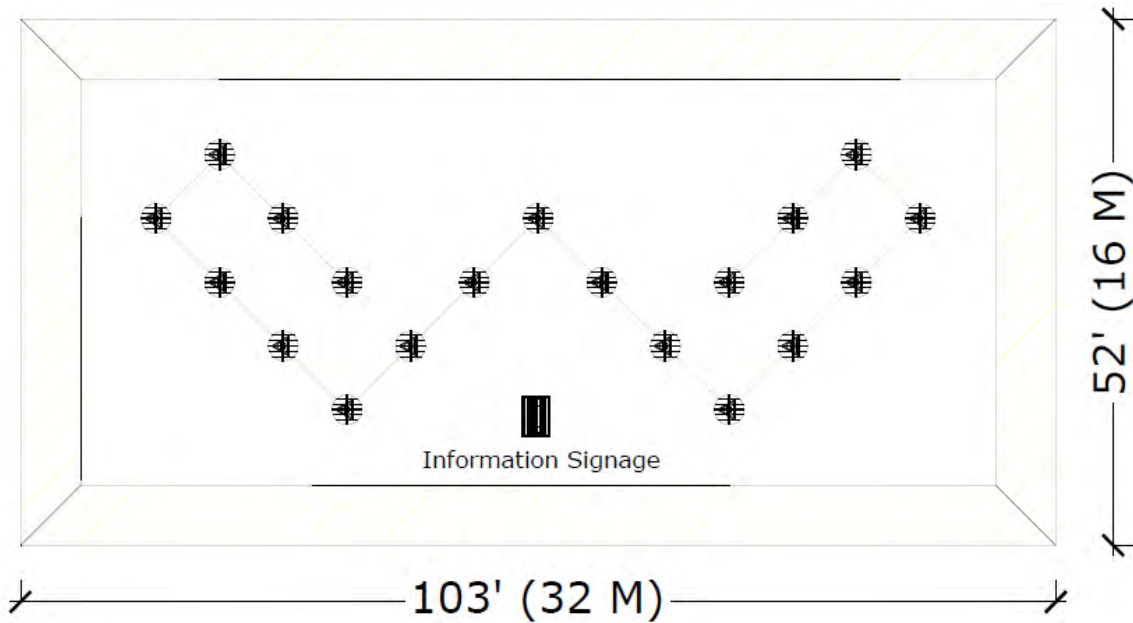
**THE WORK'S FOOTPRINT**

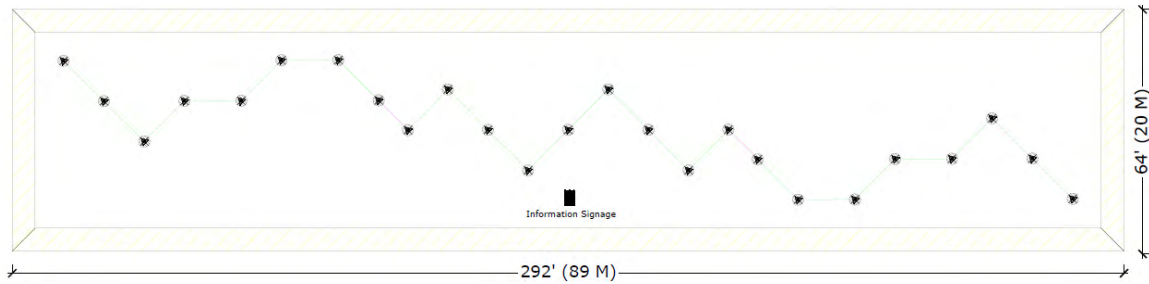
Using the maximum number of modules, being 25 modules: the footprint varies from 5,356 square feet (497 square meters) and 18,688 square feet (1,736 square meters).

Configuration can easily be adapted according to the site chosen for the installation. A space of 8 to 12 feet (0.75-1.25 meters) is required between the prisms.

Modules are connected to each other with cable ramps, and connected in series, starting from the electric source(s).

*Examples of configuration with 25 modules*





**SIGNAGE**

A bilingual (English - French) generic signboard is included with this installation. It is 4 feet (1,2m) wide by 4½ feet (1,4m) high. A solar panel lamp is included.

The content of the signage cannot be changed. If the client wishes to produce his own signage, they must provide it and have the content validated by the Creos communication team.

Model of the included signage:

*Back + Front*

**PRISMATICA**

**Prismatica** is an installation comprised of pivoting prisms more than two metres tall, transforming the space into a giant kaleidoscope. The prisms are made of panels laminated with a dichroic film that transmits and reflects every colour in the visible spectrum, varying with the position of the light source and the observer. The prisms are mounted on bases containing projectors. As visitors wander among and manipulate the prisms, they will enjoy an infinite interplay of lights and colourful reflections. As the prisms rotate, a variable-intensity soundtrack comprised of bell sounds will play.

**Prismatica** est une installation interactive de prismes colorés pivotants d'une hauteur de plus de deux mètres, créant un kaléidoscope géant. Chaque prisme est composé de panneaux recouverts d'un filtre dichroïque qui relie les couleurs de l'arc-en-ciel en fonction de la lumière et de l'angle d'observation. Fixés sur un socle, les prismes intègrent des projecteurs. Le public, qui déambule et manipule les prismes, s'émerveillera des jeux infinis de lumière et de réflexions aux couleurs insées. Une musique de carillons d'intensité variable accompagne la rotation des prismes.

Concept and execution ..... **RAW Design in collaboration with ATOMIC3** ..... Conception et réalisation

Sound design ..... **DIX au carré** ..... Conception sonore

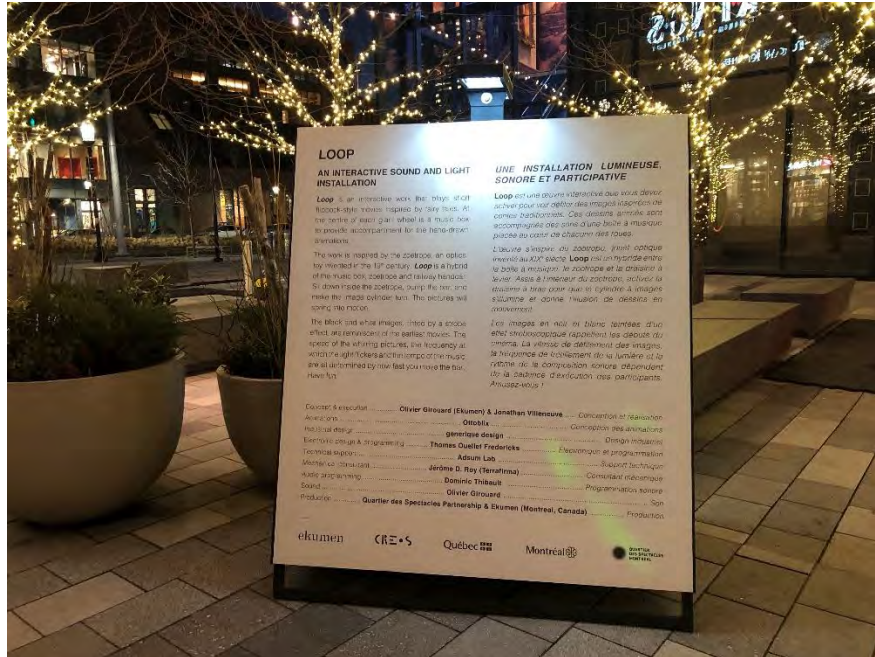
Lighting design ..... **ATOMIC3 and Jean-François Piché** ..... Conception lumière

Production ..... **Quartier des Spectacles Partnership (Montreal, Canada)** ..... Production

ATOMIC  
3

Québec

Quartier des Spectacles  
MONTREAL



**HANDLING**

The Prismatic display requires a forklift 5,000 pounds (approx. 2300 kilos) for exterior loading and handling off-site.

The forklift will be used on the first day of assembly to unload the truck, and for handling equipment on site during the installation. It will also be used for the disassembly, for handling equipment on site and to load the truck.



The installation should not, under any circumstance, be moved without the approval of Creos' team

**POWER SUPPLY**

For each module: 21 W – 120 volts – 60hz

Connection type: North American standard plug. Creos will provide the adaptors if necessary.

Number of connections: 2-5 independent circuits

*Even though the modules can function with only one 15A / 120V independent circuit, we prefer to split the electric connections lines and therefore increase the number of configuration options.*

Day of connection: Day 1 of assembly

Day of disconnection: Day 1 of disassembly

## TECHNICAL MANPOWER AND SITE SECURITY

### \* Skills required:

- Ability to lift and carry heavy loads (50 – 100 pounds / 25 – 50 kilos)
- Ability to use basic tools (screwdriver, drill, hand tools)
- Ability to work as part of a team and to follow instructions
- Experience as general / manual worker

Assembly and disassembly: One certified heavy equipment operator

Media opening: In case of Media premiere, please inform us about date and time

During the event: One person for display maintenance. The daily maintenance consists in inspecting the module(s) and recording any lightning, sound, interactivity or mechanism problem and inform Creos' team.

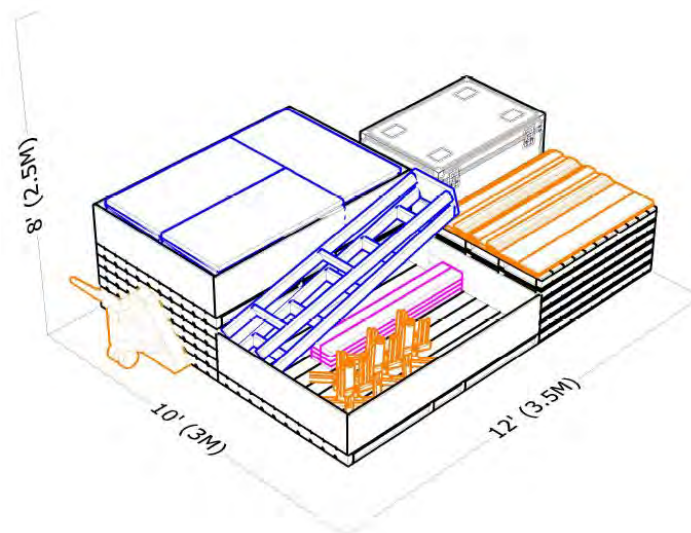
## TRANSPORTATION

The equipment travels in one 40 feet (approx. 12 meters) container for oversea transportation or in a fifty-three (53) feet trailer (approx. 16 meters) for ground transportation.

We will need the following information for the coordination of the transport of the Work.

- Full name of the local producer
- Complete civic address of the place of delivery
- Contact person from local producer for coordination of the transport
- Site access restriction

A secured space is required at the venue to store all extra equipment, transportation dollies, boxes and pallets.



# Appendix B

## Budget

**Prismatica  
25 units  
July 2nd – October 17th 2022**

<b>Artwork</b>		<b>\$89 250,00</b>
<b>Production team fees</b>		<b>\$10 794,00</b>
<b>Ancillary fees</b>		<b>\$4 290,00</b>
<b>Logistic material</b>	<b>Provided by local producer</b>	<b>\$0,00</b>
<b>Production material</b>		<b>\$11 591,25</b>
<b>Transportation - Team and Artwork</b>		<b>\$11 970,00</b>
<b>Lodging</b>		<b>\$2 250,00</b>
<b>Per diem fees</b>		<b>\$1 169,30</b>
<b>Security</b>	<b>Provided by local producer</b>	<b>\$0,00</b>
<b>Local workforce</b>	<b>Provided by local producer</b>	<b>\$0,00</b>
<b>Subtotal</b>		<b>\$131 314,55</b>
<b>Administration</b>	<b>10%</b>	<b>\$13 131,46</b>
<b>Total</b>		<b>\$144 446,01</b>
<b>Total in USD</b>		<b>\$119 357,14</b>

*Pricing is in \$CAD*

# Appendix C

## Production Schedule

June 30, 2022	Production crew on site Equipment arrives on site on am First day of assembly
July 1, 2022	Last day of assembly and testing
July 2, 2022 – October 16, 2022	Event
October 17, 2022	Dismantling of the installation Equipment leaves the site on pm

# Appendix D

## Manpower and security requests

**June 30, 2022**

Four (4) workers for unloading and assembly.  
Days of 8 working hours.

**July 1, 2022**

Creos staff for touch ups and cleaning

**July 2, 2022 to October 16, 2022**

Maintenance and operation of the artwork  
Security

**October 17, 2022**

Four (4) workers for dismantling and loading.  
Days of 8 working hours

# Appendix E

## Excise Tax Act

Extract of the publication P-009 in terms of tps/tvh

I, Paula Boggs Muething, on behalf of the City of Cincinnati, 801 Plum Street, Cincinnati OH 45202 US certify that the City of Cincinnati is not a resident of Canada for purposes of the Excise Tax Act, and that the City of Cincinnati is not registered to GST under subdivision d of division V of Part IX of that Act.

I also undertake to inform immediately Benoit Lemieux, 1-1375 Marie-Victorin St., Saint-Bruno-de-Montarville, J3V 6B7, Quebec, Canada of any changes in the City of Cincinnati residence status for purposes of that Act or the moment the City of Cincinnati becomes registered for the purpose of that Act.

\_\_\_\_\_  
Date

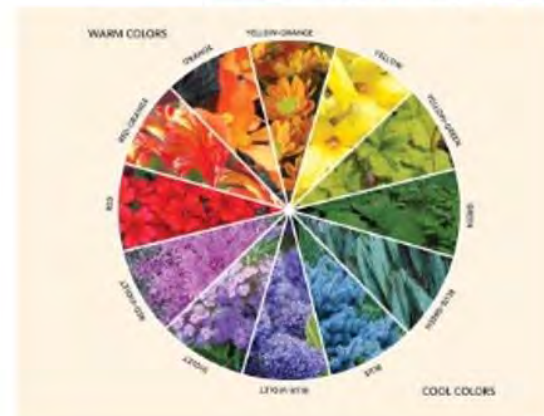
\_\_\_\_\_  
Paula Boggs Muething, City Manager

APPROVED AS TO FORM:

\_\_\_\_\_  
Assistant City Solicitor

# The Science of Color

- ▶ The 2022 Summer Show at the Krohn Conservatory is titled: The Science of Color. It touches on the visual spectrum of color, how we perceive it, how flowers get their color, what pollinators see, etc.





**BOARD OF PARK  
COMMISSIONERS**

Date: August 19, 2021

To: Board of Park Commissioners

From: Patricia Thompson, Senior Accountant *KSK*

Subject: Acceptance of In-Kind Contributions

James Goetz  
*President*

Linda Lee Thomas  
*Vice President*

Brad Lindner

Susan F. Castellini

Molly North

**Background**

Board approval is needed to retain in-kind contributions for QTR2 2021.

**Description**

Staff is requesting approval to accept the following QTR2 2021 in-kind contributions:

Row Labels	Sum of Amount
Contracted Services	\$ 14,480.00
Park Supplies	\$ 35,619.48
<b>Grand Total</b>	<b>\$ 50,099.48</b>

Kara S. Kish  
*Director*

Jenny Mobley  
*Deputy Director*

Crystal Courtney  
*Division Manager*

Rocky Merz  
*Division Manager*

Steven L. Schuckman  
*Division Manager*

Craig Sherman  
*Division Manager*

**Recommendation**

Staff respectfully requests the Board approve to accept the in-kind contributions in the amount of \$50,099.48.

Attachment A—Cincinnati Parks Foundation In-Kind Contributions  
QTR2

**Indirect donations to Cincinnati Park Board**

2nd QTR 2021

Attachment A

Type	Date	Num	Name	Type	Memo	Amount	Notes
Check	04/14/2021	13269	COUNTRY CASUAL	Park Supplies	6 six ft Monarch teak benches Cust #2259834	7,078.90	
Check	06/28/2021	13342	E C SHAW COMPANY	Park Supplies	Plaques for benches Inv 823932/3/4	382.03	
Check	04/30/2021	13281	Eads Fence	Park Supplies	Fencing for Larz Anderson park	346.14	
Check	06/01/2021	13317	J. B. Doppes Sons Lumber Company	Park Supplies	Inv #682860, materials needed for bench installations	1,075.00	
Check	04/14/2021	13271	Klyn Nurseries	Park Supplies	trees Mt Airy Ken Casey Order # 184976	385.50	
Check	06/09/2021	13328	Mike Weber	Park Supplies	Reimbursement for Larz Anderson expenses - Bloomin garden, EADS	1,349.47	
Check	04/14/2021	13270	MKSK	Contracted Services	Balance Due engineering Inv 2210250	2,180.00	these design fees on this particular project are ok for CPF to pay per MOU discussions (grandfathered)
Check	05/26/2021	13312	MKSK	Contracted Services	Phasing, site survey, permitting Inv 2210563	12,300.00	these design fees on this particular project are ok for CPF to pay per MOU discussions (grandfathered)
Check	04/30/2021	13285	NATORP LANDSCAPE SUPPLY	Park Supplies	northern red tree for Bart Sherrill Stanbery Inv 93089	291.50	
Check	05/21/2021	13303	NATORP LANDSCAPE SUPPLY	Park Supplies	rosa dr popcorn inv 89324 for Ken Casey	236.25	
Check	04/14/2021	13277	NATORP LANDSCAPE SUPPLY	Park Supplies	Eden Park - Vietnam memorial Inv #89462	2,591.00	
Check	04/30/2021	13278	NATORP LANDSCAPE SUPPLY	Park Supplies	Eden Park - Vietnam memorial Inv #91550	959.00	
Check	04/30/2021	13279	NATORP LANDSCAPE SUPPLY	Park Supplies	Mt. Echo - Lifecenter trees Inv #91326	6,498.50	
Check	06/23/2021	13340	Schubert Tennis	Park Supplies	4 pickle net systems	5,781.00	
Check	04/30/2021	13286	SERVICE SUPPLY LTD INC	Park Supplies	half downpyrmt for 6 dumor benches - per Linda Groves PO 27088	4,232.50	
Check	06/01/2021	13319	SERVICE SUPPLY LTD INC	Park Supplies	Inv 22568, 6 Dumor benches 50% final pymt	4,232.50	
General Journal	05/21/2021	146		Park Supplies	Bears Mulch-Mulch for Foundation Garden	180.19	
<b>Total</b>						<b>50,099.48</b>	

# Monthly Reports

## August 2021



BOARD OF PARK

COMMISSIONERS

James Goetz  
*President*

Linda Lee Thomas  
*Vice President*

Susan F. Castellini

Brad Lindner

Molly North

Kara S. Kish  
*Director*

Jenny Mobley  
*Deputy Director*

Crystal Courtney  
*Division Manager*

Rocky Merz  
*Division Manager*

Steven L. Schuckman  
*Division Manager*

Craig Sherman  
*Division Manager*

Date: August 19, 2021

To: Board of Park Commissioners

From: Steven Schuckman, Division Manager

*KSK*

Subject: Monthly CIP/Planning & Design Update

---

**Sawyer Point Courts:** Soil sampling was completed and the conclusion was that no subsurface work would be required prior to resurfacing the courts. A plan will now be developed to fill surface cracks and resurface the courts, identify lighting solutions and netting requirements and make adjustments to the perimeter fencing and gates. Once the plan is in place a cost estimate will be generated and a funding plan developed.

**Administration Building Renovation:** Office configuration changes and ADA improvements to the restrooms.

Budget: \$170,000

Funding Source: FY20 CIP

Start Date: 9/21

Completion Date: 11/21

Long lead time items have delayed the start of the project. The Contractor is working on putting together a new construction schedule based on lead times. The projected start date is now 8/30/21. One toilet room will remain open for staff use throughout the duration of the project. This project was bid twice because bidders failed to meet MBE/WBE goals.

**Hauck/French/ Administration Building Exterior Painting:** These park buildings are all in need of painting.

Budget: \$226,000

Funding Source: FY18 & FY20 CIP

Start Date: 7/21

Completion Date: TBD. The project was bid three times because bidders failed to meet MBE/WBE goals.

Work was completed at the Administration Building in July. Work on the Hauck House will start in mid-August. Staff is working with Purchasing to procure the carpentry work associated with painting French House.

**SRP River Edge:** An engineer will develop a schematic design and cost estimate for this hard edge to stabilize the riverbank at Smale Park between the Roebling Bridge and Elm Street. The engineer, KZF is working with Sasaki on the design of the project, integrating it into the park's master plan.

Budget: \$100,000

Funding Source: State Grant

Start Date:6/21

Completion date: 11/21

Design work is underway and is expected to take four months to complete

**Burnet Woods Disc Golf Course:** Improve and expand the course. Includes installation of concrete pads to replace natural surface tees.

Budget: \$25,000

Funding Source: CIP and Fleischmann

Completion Date: 11/21

A new course design was developed with staff and with the disc golf community. The expansion is part of the master plan for the park. A price was obtained from the City contractor but Purchasing then determined that bids had to be solicited from more contractors. After others declined to bid on it, one bid was received but it well-exceeded the budget. We were then authorized to go back to the City contract and a proposal has been received that meets budget.

**Mt Airy Bike Trail Parking at Shepard Creek and Diehl Road:** Provide additional parking to serve the new bike trails in Mt. Airy.

Budget: \$140,000

Funding Source: FY20

Start Date:10/20

Completion date: 6/21

Work was completed at both sites, including new ADA spaces.

**Mt Airy Retaining Wall Project:** The retaining wall adjacent to the Mt Airy Service Building needs to be replaced.

Budget: \$140,000

Funding Source: FY20

Start Date:6/21

Original Completion date: 7/21

Work is underway and to be completed in September. The Contractor was given a Notice to Proceed in early July and has until November 1<sup>st</sup> to complete the work per their contract. The Contractor requested a start date in August to allow for shop drawing review and the lead time for steel fabrication.

**Little Duck Creek Restoration:** Restoration of the creek in Bramble Park to prevent further erosion. This project is funded with a grant from the State of Ohio.

Budget: \$173,075

Funding Source: \$130,000 State Grant / \$43,075 Private

Start Date: 2/21

Completion date: 8/22

The RFP for this design/ build project closed on 6/7/21. It was originally bid as an RFQ and there were no successful bidders. It was then determined to restructure it as an RFP. Unfortunately, there were no bidders for the RFP. Staff then conferred with contractors and determined what project changes might bring bidders to the project. The modified RFP was then rebid. An on-site meeting was held with prospective contractors on 8/5. Bids now close on 8/17.

**Bike Skills Center:** The schematic design for the site is underway. A design and cost estimate are expected by September.

**Boat Dock RFP:** Responses were due on June 24<sup>th</sup> and were ultimately rejected. The City Manager has appointed a committee to review options for pursuing the project.

**Hollister Property Sale:** One proposal was received and was approved by the City Manager. The proposal, from Uptown Holdings, LLC, met all the RFP requirements. Negotiations to sell the property can now proceed with final terms to be brought back to the Board.

**Owls Nest Park Pavilion:** This structure is severely deteriorated and was scheduled for demolition. At the request of the community the demolition was put on hold. One meeting was held with stakeholders and community representatives and the group was provided information on the condition of the building and the cost of repairs. Next steps include further discussion with this group about shelter needs and funding opportunities.

**Ezzard Charles Plaza:** The project was put out to bid 8/10. Bids are due back on 8/24. The project entails the erection of a sculpture of world heavyweight boxer Ezzard Charles set in a plaza in Laurel Park. Funding of \$100,000 was provided by the Parks Foundation. Once bids are received they will be brought back to the Board for approval. The project is slated for completion the spring of 2022.

**Operations Center Replacement:** The kick-off meeting was held for the project. The architects will first review and confirm the program and examine the District 5 and Sinton sites while observing the current operations center. A draft program and budget are expected by early October and a final schematic plan and cost estimate are due in November.

**Burnet Woods Dog Park:** Staff developed plans and costs for a dog park in Burnet Woods

**Tom Jones Commons:** The project was completed and dedicated. The final seeding mix will be planted in the early fall and followed by a maintenance plan to water the landscape and maintain the wetland.

**Sawyer Point Viewing Platform:** Rehabilitation of the structure supporting the platform.

Budget: \$772,000

Funding Source:

Start Date: 9/20

Completion Date: 8/21

The work was completed in July. Completion had been delayed due to high water over the winter and into the Spring.

**Property Issues:** Staff worked with a number of organizations and contractors on a series of easements, rights-of-entry and other property agreements. Work included establishing easements for the Art Museum's new driveway, a number of sewer repair projects and utility easements at several parks.

# Cincinnati Park Board

## Financial Presentation – August 2021

### BOARD OF PARK COMMISSIONERS

**James Goetz** - PRESIDENT    **Linda Lee Thomas** - VICE PRESIDENT  
**Susan F Castellini**    **Brad Lindner**    **Molly North**

**Kara Kish** – DIRECTOR  
**Jenny Mobley** - Deputy Director    **Steven Schuckman** - DIVISION MANAGER    **Rocky Merz** - DIVISION MANAGER  
**Crystal Courtney** - DIVISION MANAGER    **Craig Sherman** - CFO

# Table of Contents



YTD EXPENSES



YTD REVENUE



YTD PARK BOARD  
FUND BALANCES



YTD PARK BOARD  
TRUST BALANCES



STAFFING  
SUMMARY

# Year to Date Expenses

As of July 31, 2021

FUND	Fund Name	Expenses	Budget	Target % Spend*^	Actual % Spend	% Variance
050	General Fund	\$ 1,319,181	\$ 9,205,629	10.9%	13.4%	2.5%
107	Stormwater Fund	\$ -	\$ 1,935,020	0.0%	0.0%	0.0%
301	Hwy Greenspace (Street Construction Management)	\$ 14,887	\$ 404,090	8.2%	3.7%	-4.5%
302	Infrastructure Fund (Income Tax-Infrastructure)	\$ 93,779	\$ 1,707,970	5.2%	5.5%	0.3%
318	Sawyer Point	\$ 9,607	\$ 1,106,920	2.3%	0.9%	-1.4%
326	Park Donations and Special Activity	\$ 135,984	\$ 1,141,781	7.0%	10.7%	3.7%
327	W.M. Ampt Fund (Free Concerts)	\$ 750	\$ 16,000	15.0%	4.7%	-10.3%
328	Groesbeck Fund (endowment)	\$ 4,975	\$ 16,000	15.0%	31.1%	16.1%
329	Cincinnati Riverfront Park	\$ 4,682	\$ 1,526,430	5.2%	0.3%	-4.9%
330	Park Lodge / Pavilion Deposits	\$ 35,775	\$ 372,870	1.4%	9.6%	8.2%
332	Krohn Conservatory	\$ 86,893	\$ 1,344,680	3.2%	4.2%	1.0%
430	Private Endowment	\$ 47,223	\$ 1,922,815	7.1%	2.5%	-4.6%
792	Forestry Assessment	\$ 120,088	\$ 2,354,930	4.6%	4.0%	-0.6%
<b>Grand Total</b>		<b>\$ 1,873,824</b>	<b>\$ 23,055,135</b>			

- Fund 050 – In FY22, Park Staff will be encumbering dollars for expense for a full year versus quarterly. This process change will cause a slight increase in actual spend over target spend throughout FY22.

Unspent dollars returned to the city

\* Includes expensed and committed dollars

^ Target increases monthly

# Year to Date Revenue

As of July 31, 2021

FUND_DESC	Actual Revenue	Budget	Target % Revenue^	Actual % Revenue	% Variance
318 - Sawyer Point	\$ 114,721	\$ 850,000	13.1%	13.5%	0.4%
326 - Park Donations and Special Activity	\$ 38,015	\$ 760,000	7.5%	5.0%	-2.5%
329 - Cincinnati Riverfront Park	\$ 237,472	\$ 1,062,000	8.2%	22.4%	14.2%
330 - Park Lodge / Pavilion Deposits	\$ -	\$ 235,630	22.6%	0.0%	-22.6%
332 - Krohn Conservatory	\$ 21,227	\$ 1,338,000	3.1%	1.6%	-1.5%
<b>Grand Total</b>	<b>\$ 411,435</b>	<b>\$ 4,245,630</b>			

- Fund 332 – Timing of admission deposits drove down Krohn’s revenue
- Fund 329 – Increase was due to the receipt of CAM payments in July versus June.

^ Target increases monthly

# Year to Date Park Board Fund Balances

Fund Name		Account Balance as of 08/03/2021	Fund Name		Account Balance as of 08/03/2021
318	Sawyer Point	\$ 1,365,706	403	Yeatman's Cove Park Trust	\$ 708,756
326	Park Misc Revenue & Special Activity	\$ 1,350,440	428	Urban Forestry	\$ 272,442
327	WM Ampt Free Concerts	\$ 53,694	430	Commissioner Fund	\$ 381,594
328	Groesbeck Endowment	\$ 149,243	706	Ampt Trust	\$ 126,394
329	Cincinnati Riverfront Park	\$ 3,847,063	707	Groesbeck Trust	\$ 38,250
330	Park Lodge/Pavilion Deposits	\$ 1,115,424	708	Schmidlapp Music	\$ 52,666
332	Krohn Conservatory	\$ 799,073	752	Permanent Capital Improvement	\$ 2,528,159
334	Columbia Parkway Greenway	\$ 505	792	Forestry Assessment	\$ 2,228,614

Fund Name	Account Balance as of 08/03/2021	FY22 Budget Expenses	FY22 Budget Revenue	Recommend Reserves	Available Dollars
318 Sawyer Point	\$ 1,365,706	\$ 1,106,920	\$ 850,000	\$ 450,000	\$ 658,786
326 Park Donations and Special Activity	\$ 1,350,440	\$ 1,141,781	\$ 760,000	\$ 400,000	\$ 568,659
329 Cincinnati Riverfront Park	\$ 3,847,063	\$ 1,526,430	\$ 1,062,000	\$ 800,000	\$ 2,582,633
330 Park Lodge/Pavilion Deposits	\$ 1,115,424	\$ 372,870	\$ 235,630	\$ 200,000	\$ 778,184
332 Krohn Conservatory	\$ 799,073	\$ 1,344,680	\$ 1,338,000	\$ 700,000	\$ 92,393
403 Yeatman's Cove Park Trust	\$ 708,756	\$ -	\$ -	\$ 708,756	\$ 0
752 Permanent Capital Improvement	\$ 2,528,159	\$ -	\$ -	\$ 600,000	\$ 1,928,159
<b>Total Available</b>	<b>\$ 11,714,622</b>	<b>\$ 5,492,681</b>	<b>\$ 4,245,630</b>	<b>\$ 3,858,756</b>	<b>\$ 6,608,815</b>

# Year to Date Park Board Trust Balances

Fund Name	Mar-21 Balance	Apr-21 Balance	May-21 Balance	Jun-21 Balance	Jul-21 Balance
<b>Trustee</b>					
Bettman	\$ 2,498,695	\$ 2,584,806	\$ 2,602,216	\$ 2,591,101	\$ 2,625,472
Drabner	\$ 1,265,722	\$ 1,309,903	\$ 1,298,133	\$ 1,317,152	\$ 1,332,558
Fleischmann	\$ 850,658	\$ 880,661	\$ 844,636	\$ 856,907	\$ 866,913
Fleischmann	\$ 2,987,625	\$ 3,091,609	\$ 3,063,685	\$ 3,107,722	\$ 3,143,745
Geier	\$ 1,883,587	\$ 1,949,930	\$ 1,937,016	\$ 1,965,276	\$ 1,988,307
Miles-Edwards	\$ 3,892,704	\$ 4,023,120	\$ 4,012,217	\$ 4,047,626	\$ 4,140,026
Levy	\$ 37,097	\$ 38,700	\$ 38,349	\$ 39,131	\$ 39,905
<b>Sub-total</b>	<b>\$13,416,089</b>	<b>\$13,878,729</b>	<b>\$13,796,251</b>	<b>\$13,924,915</b>	<b>\$14,136,925</b>
<b>Beneficiary Only</b>					
Hauck- Sooty Acres	\$ 611,247	\$ 631,999	\$ 635,605	\$ 617,923	\$ 622,854
Hauck - Fountain Sq	\$ 1,739,775	\$ 1,795,685	\$ 1,806,582	\$ 1,740,235	\$ 1,754,165
Meyer	\$ 5,473,036	\$ 5,647,908	\$ 5,683,237	\$ 5,482,708	\$ 5,526,541
<b>Sub-total</b>	<b>\$ 7,824,059</b>	<b>\$ 8,075,592</b>	<b>\$ 8,125,424</b>	<b>\$ 7,840,866</b>	<b>\$ 7,903,560</b>
<b>Endowment Total</b>	<b>\$ 21,240,148</b>	<b>\$ 21,954,321</b>	<b>\$ 21,921,675</b>	<b>\$ 21,765,782</b>	<b>\$ 22,040,485</b>
Commissioner Fund 430	\$ 835,058	\$ 869,289	\$ 612,689	\$ 121,000	\$ 381,594
Commissioner Money Market Acct	\$ 2,651,653	\$ 2,692,114	\$ 3,209,891	\$ 3,387,364	\$ 3,046,687
Commissioner Investment Acct	\$ 4,029,484	\$ 4,145,195	\$ 4,175,062	\$ 4,219,967	\$ 4,264,072
<b>Total Commissioner Dollars</b>	<b>\$ 7,516,195</b>	<b>\$ 7,706,599</b>	<b>\$ 7,997,642</b>	<b>\$ 7,728,331</b>	<b>\$ 7,692,353</b>
<b>Grand Total</b>	<b>\$ 28,756,343</b>	<b>\$ 29,660,920</b>	<b>\$ 29,919,317</b>	<b>\$ 29,494,113</b>	<b>\$ 29,732,838</b>

# Staffing Summary

As of July 31, 2021

Month	Full Time Budget Positions	Full Time Filled Positions	Variance
Jul-21	156	133	23
Aug-21	156	-	
Sep-21	156	-	
Oct-21	156	-	
Nov-21	156	-	
Dec-21	156	-	
Jan-21	156	-	
Feb-21	156	-	
Mar-21	156	-	
Apr-21	156	-	
May-21	156	-	
Jun-21	156	-	
<b>Average</b>	<b>156</b>	<b>133</b>	<b>23</b>

Position Status	2017	2018	2019	2020	2021
Filled	143	137	141	142	135
Vacant	17	27	24	22	21
<b>Total</b>	<b>159</b>	<b>164</b>	<b>165</b>	<b>164</b>	<b>156</b>

Available Vacant FT Positions	FTEs	Status
Clerk Typist 2	1	Holding
Asst Supvr of Fleet Services	1	Holding
Automotive Mechanic-Crew Chief	1	Holding
Laborer	1	Holding
Senior Architect	1	Waiting for candidate response
		Candidate declined offer -
Landscape Architect	1	reposting
Administrative Technician	1	Holding
Clerk Typist 3	1	Holding
Facility Maintenance Specialist	3	Posted to public
		Pending City Administration
HVAC Specialist	1	approval
Maintenance Crew Leader	1	Posted
Service Crew Leader	2	Working off eligible list
Storekeeper	1	Working off eligible list
Human Resource Managers	1	Holding
Supvr Prks/Rec Mnt & Const	1	Holding
Tree Maintenance Worker	1	Extended posting to 8/16/21
Truck Driver	3	Working off Open to public list
Plumber	1	Holding

\* Positions PVAed in FY22 were part of the budget reduction exercise

# Cincinnati Park Board

## Endowment Funds Asset Allocation & Performance

	Allocation		Performance						Inception Date
	Market Value \$	%	3 Months	CYTD	1 Year	3 Year	5 Year	Inception	
<b>TOTAL FUND</b>	<b>\$ 25,989,015</b>	<b>100.0%</b>	<b>5.36</b>	<b>9.34</b>	<b>27.67</b>	<b>12.12</b>	<b>11.81</b>	<b>8.15</b>	
<b>TOTAL US BANK</b>	<b>\$ 7,247,041</b>	<b>27.9%</b>	<b>5.71</b>	<b>9.69</b>	<b>29.90</b>	<b>11.90</b>	<b>11.81</b>	<b>13.07</b>	
DRABNER FUND	\$ 1,317,149	5.1%	5.69	9.39	29.57	11.92	11.77	6.35	May-2002
<i>CPB Custom benchmark</i>			5.30	9.88	29.85	12.74	12.32		
FLEISCHMANN ENDOW FUND	\$ 856,905	3.3%	5.73	9.60	29.87	11.88	11.88	7.80	Dec-1992
<i>CPB Custom benchmark</i>			5.30	9.88	29.85	12.74	12.32		
GEIER FUND	\$ 1,965,271	7.6%	5.76	9.66	29.84			15.86	Jun-2019
<i>CPB Custom benchmark</i>			5.30	9.88	29.85				
FLEISCHMANN GARDENS FUND	\$ 3,107,716	12.0%	5.69	9.85	30.09			15.61	Aug-2019
<i>CPB Custom benchmark</i>			5.30	9.88	29.85				
<b>TOTAL BAHL &amp; GAYNOR</b>	<b>\$ 4,045,083</b>	<b>15.6%</b>	<b>5.54</b>	<b>11.41</b>	<b>30.70</b>	<b>15.42</b>	<b>14.47</b>	<b>8.40</b>	
MILES EDWARDS FUND	\$ 4,045,083	15.6%	5.54	11.41	30.70	15.42	14.47	8.40	Dec-2003
<i>80% S&amp;P500/ 20% BBgBarc INT GOV/CR</i>			7.01	11.88	31.81	16.06	14.70	9.06	
<b>TOTAL PNC</b>	<b>\$ 6,813,696</b>	<b>26.2%</b>	<b>4.93</b>	<b>7.28</b>	<b>23.31</b>	<b>9.73</b>	<b>9.45</b>	<b>4.60</b>	
ARTHUR M. BETTMAN NATURE CENTER	\$ 2,591,875	10.0%	5.29	8.03	24.87	9.73	9.45	7.91	Dec-1992
<i>CPB Custom benchmark</i>			5.30	8.18	26.10	12.21	11.51	9.07	
PNC COMM	\$ 4,221,821	16.2%	4.71	6.82	22.36			2.57	Dec-2008
<i>60% S&amp;P 500+ 40% BBgBarc Agg</i>			4.75	8.17	25.25			-	
<b>TOTAL FIFTH THIRD</b>	<b>\$ 7,883,195</b>	<b>30.3%</b>	<b>5.31</b>	<b>9.74</b>	<b>27.82</b>	<b>12.68</b>	<b>12.49</b>	<b>6.56</b>	
HAUK SOOTY ACRES FUND	\$ 618,170	2.4%	5.30	9.80	28.10	12.90	13.20		Jan-2013
<i>CPB Custom benchmark</i>			5.30	9.90	29.90	13.10	12.40		
HELEN MEYER FUND	\$ 5,484,950	21.1%	5.30	9.70	27.80	12.60	12.40	7.10	Oct-2002
<i>CPB Custom benchmark</i>			5.30	9.90	29.90	13.10	12.40	9.40	
HAUK FOUNTAIN SQ FUND	\$ 1,740,945	6.7%	5.30	9.80	27.70	12.80	12.50	7.20	Oct-2002
<i>CPB Custom benchmark</i>			5.30	9.90	29.90	13.10	12.40	9.40	
LEVY CLOCK FUND	\$ 39,131	0.2%	7.10	12.00	32.00	14.80	14.40	5.70	Jul-2001
<i>CPB Custom benchmark</i>			5.30	9.90	29.90	13.10	12.40		



**BOARD OF PARK**

**COMMISSIONERS**

Brad Lindner  
*President*

James Goetz  
*Vice President*

Susan F. Castellini

Linda Lee Thomas

Molly North

Date: August 19, 2021

To: Board of Park Commissioners

From: Kara Kish, Director *KSK*

Subject: Personnel Actions – July 2021

---

<b>Name</b>	<b>Title</b>	<b>Division</b>	<b>Action</b>
Raymond Cook III	Laborer	East Region	Filled a Full-time open position

Kara S. Kish  
*Director*

Jenny Mobley  
*Deputy Director*

Crystal Courtney  
*Division Manager*

Rocky Merz  
*Division Manager*

Steven L. Schuckman  
*Division Manager*

Craig Sherman  
*Division Manager*



## 2021 SPECIAL EVENTS & PROGRAMS

Date	Description	Time	Location
Every day until 9/6	Butterflies of Bali	10:00 AM - 8:00 PM	Krohn Conservatory
Every Tues. & Thurs. 6/1 - 8/31	Acoustic Lunch at Piatt	11:30 AM - 1:30 PM	Piatt Park
Every Wed. 6/2 - 9/29	Smale Mind and Body (Embra Yoga)	6:00 PM - 7:00 PM	Smale Schmidlapp Event Lawn
Every Thurs. 5/20 - 9/2	Rockin' on the Roebling	6:00 PM - 10:00 PM	Smale Schmidlapp Event Lawn
Every Thurs.	Facebook Live with Natural Resource Management Division	10:00 AM	Facebook Live
Every Friday	Facebook Lives "Krohn ConservaSTORIES"	10:00 AM	Facebook Live
8/1 - 8/30	Storywalk at California Woods	All Day	California Woods Nature Preserve
8/19	Summer Music Festival	6:00 PM - 10:00 PM	Ault Park
Every Sun. 8/22 - 10/17	Community Yoga at Burnet Woods	4:00 PM - 5:00 PM	Burnet Woods
Every Sat. 8/21 - 10/16	Community Yoga at Burnet Woods	11:00 AM - 12:00 PM	Burnet Woods

# #cincyparks

[www.cincinnatiiparks.com](http://www.cincinnatiiparks.com)



Cincinnati Parks is committed to providing a quality experience at all parks and facilities by providing reasonable accommodations for individuals with disabilities upon request, call 5133572604. Visitors may be recorded by Cincinnati Park Board for educational and promotional uses.



## 2021 SPECIAL EVENTS & PROGRAMS

Every Sat. 8/21 - 10/17	Let's Get Physical: Saturday Vinyasa Yoga	10:00 AM	11:00 AM	Mt. Echo Park
Every Sun. until 10/24	Let's Get Physical: Sunday Vinyasa Yoga	9:00 AM	10:00 AM	Olden View Park
8/28	Music at the Esplanade	5:00 PM	7:00 PM	Castellini Esplanade at Smale Riverfront Park
9/3	Concerts at Stanbery Park	6:00 PM	9:00 PM	Stanbery Park
9/5	Riverfest West at Mt Echo	2:00 PM	11:00 PM	Mt. Echo Park
9/10, 9/17 & 9/24	Guided Hike Friday: The Swan Song of Summer	11:00 AM	12:00 PM	California Woods
9/11	Everybody in Mt. Airy	9:00 AM	12:00 PM	Mt. Airy Forest
9/16, 9/23, 9/30, & 10/7	Garden Rocks Concerts at Krohn Conservatory	6:00 PM	9:00 PM	Krohn Conservatory
Every Mon. 9/13 - 11/29	Active Adult Hikes	2:30 PM	4:00 PM	New Location Each Week. Check Cincinnati Parks.com for location details
9/13, 9/20, & 9/27	Adventures Under Glass: Fall Preschool Camp at Krohn	10:00 AM	12:00 PM	Krohn Conservatory
9/16	Summer Music Festival	6:00 PM	10:00 PM	Ault Park
9/18	Concerts at Olden View	6:00 PM	8:00 PM	Olden View
9/18	Bonsai Show	10:00 AM	5:00 PM	Krohn Conservatory
9/20	Harvest Moon & Autumnal Equinox Hike	7:30 PM	9:00 PM	French Park

# #cincyparks

[www.cincinnatiiparks.com](http://www.cincinnatiiparks.com)



Cincinnati Parks is committed to providing a quality experience at all parks and facilities by providing reasonable accommodations for individuals with disabilities upon request, call 5133572604. Visitors may be recorded by Cincinnati Park Board for educational and promotional uses.



## 2021 SPECIAL EVENTS & PROGRAMS

9/18 - 10/17	Krohn Conservatory Fall Show “Mounds of Mums” (Closed Mondays)	10:00 AM	8:00 PM	Krohn Conservatory
9/25	Fall Harvest Festival	10:00 AM	5:00 PM	Krohn Conservatory
9/25	National Public Lands Day of Service	9:00 AM	12:00 PM	Multiple Locations
9/25	Great Outdoor Weekend: Canoeing and Camping Skills	11:00 AM	3:00 PM	Burnet Woods
9/25	Great Outdoor Weekend: Storytime with a Naturalist	2:00 PM	2:30 PM	LaBoiteaux Woods Nature Preserve
9/25	Great Outdoor Weekend: California Creek Crawl	2:00 PM	3:30 PM	California Woods
9/26	Great Outdoor Weekend: Intro to Orienteering	11:00 AM	3:00 PM	Mt. Airy Forest
9/25	International Children’s Day	11:00 AM	3:00 PM	Trailside Nature Center
10/9	Everybody in Mt. Airy	9:00 AM	12:00 PM	Mt. Airy Forest
10/9	Fourth Annual Ezz Fest	t.b.d.		Laurel Park
10/9	Fungus Fest	10:00 AM	3:00 PM	Krohn Conservatory
10/22	Hallow Eve Birthday Bash	6:30 PM	10:00 PM	Ault Park

# #cincyparks

[www.cincinnatiiparks.com](http://www.cincinnatiiparks.com)



Cincinnati Parks is committed to providing a quality experience at all parks and facilities by providing reasonable accommodations for individuals with disabilities upon request, call 5133572604. Visitors may be recorded by Cincinnati Park Board for educational and promotional uses.