

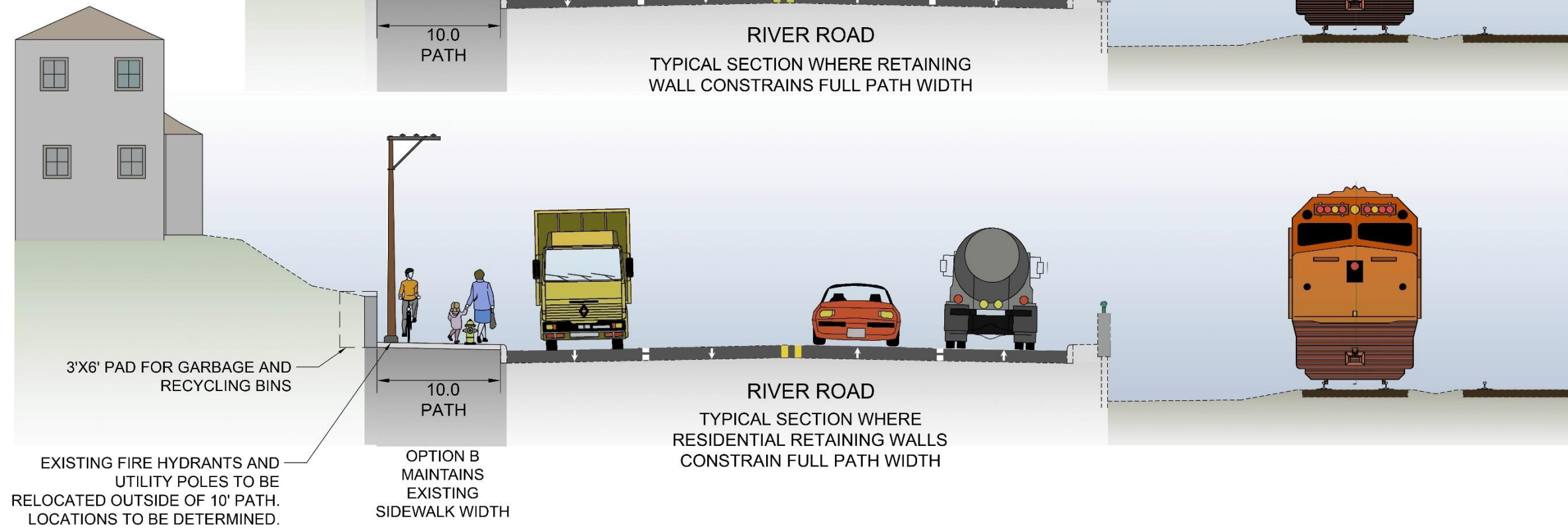
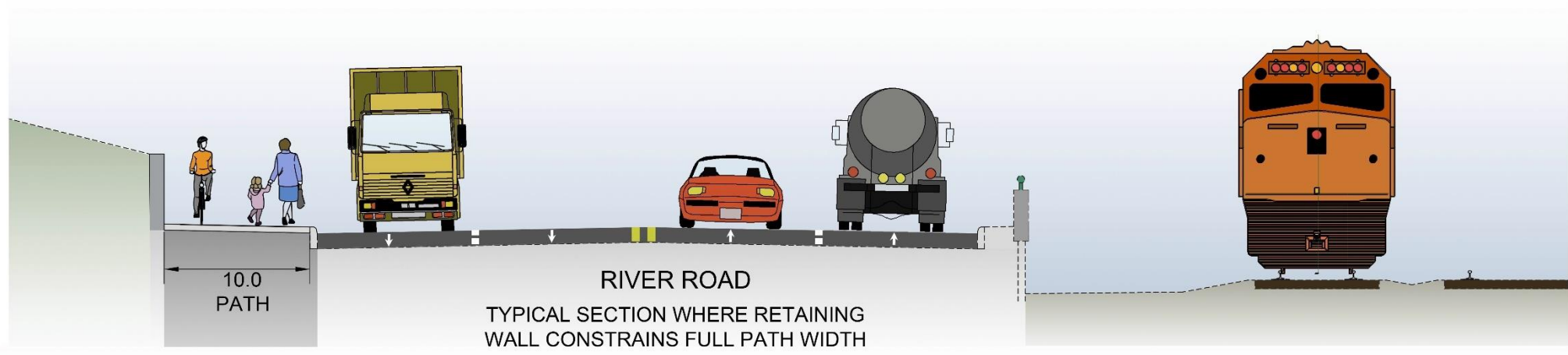
Department of
Transportation
and Engineering
City of Cincinnati
801 Plum Street
Cincinnati, Ohio 45202

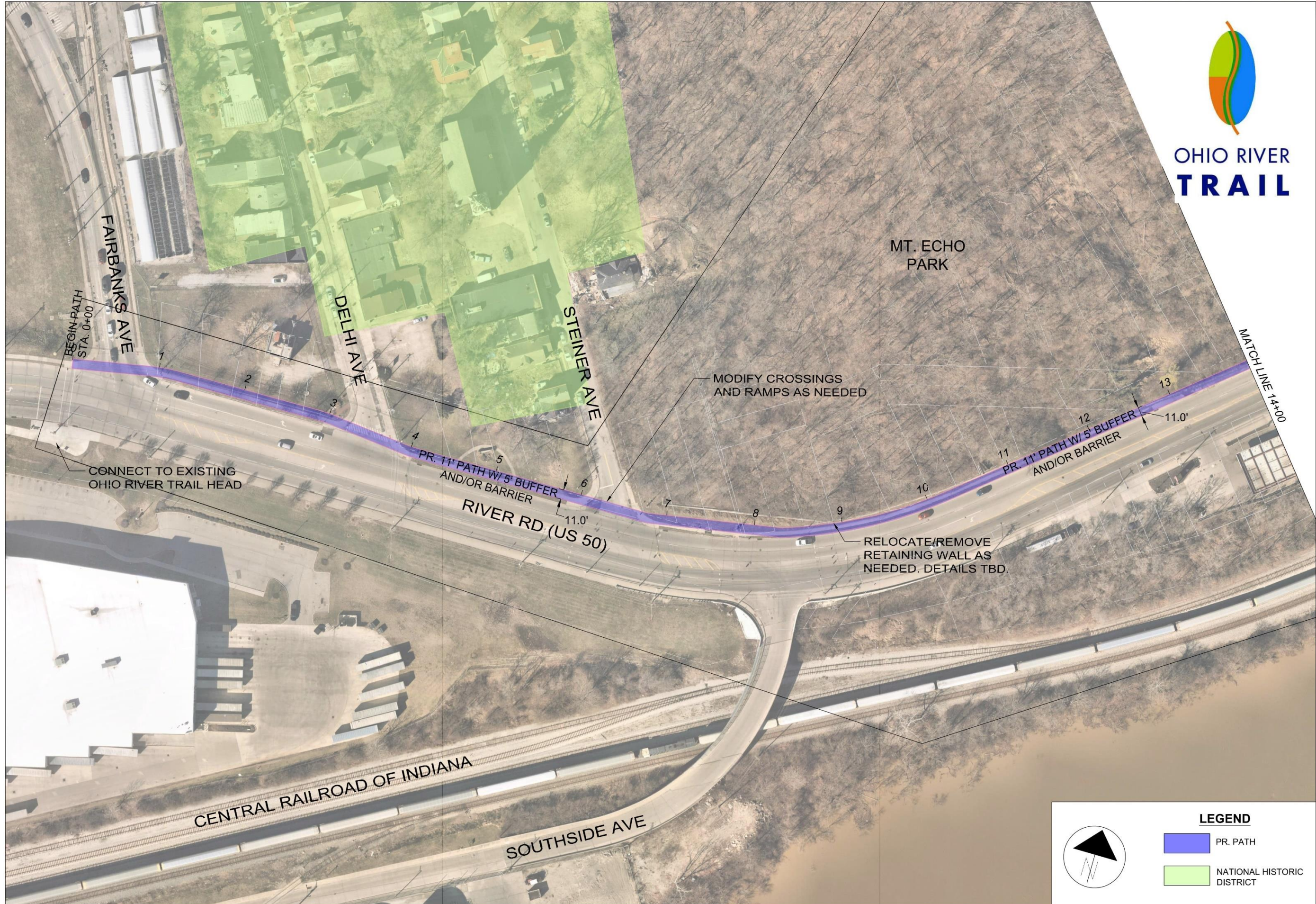
OHIO RIVER TRAIL
OPTION C - NORTH SIDE OF US 50
TYPICAL SECTIONS

Drawn by	Date
Designed by	Date
Checked by	Date
Reviewed by	Date

Consultant
TEC Engineering, Inc.
PLAN PREPARED BY:
TEC Engineering, Inc.
11000 Winton Road
Weston, OH 43081

ACC No.





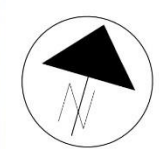
Department of
Transportation
and Engineering
City of Cincinnati
City Hall Street
Cincinnati, Ohio 45202

OHIO RIVER TRAIL

OPTION C - NORTH SIDE OF US 50
BEGIN TO STA. 14+00

Date	Drawn by	Date	Designed by	Date	Checked by	Date	Reviewed by

Consultant
TEC Engineering, Inc.
7228 Centre Pointe Blvd
Wilmington, OH 45391
ACC No. _____



LEGEND

	PR. PATH
	NATIONAL HISTORIC DISTRICT





Department of
Transportation
and Engineering
City of Cincinnati
863 Plum Street
Cincinnati, Ohio 45202

OHIO RIVER TRAIL

OPTION C - NORTH SIDE OF US 50
STA. 14+00 TO 28+00

Drawn by	Designed by	Checked by	Reviewed by
Date	Date	Date	Date

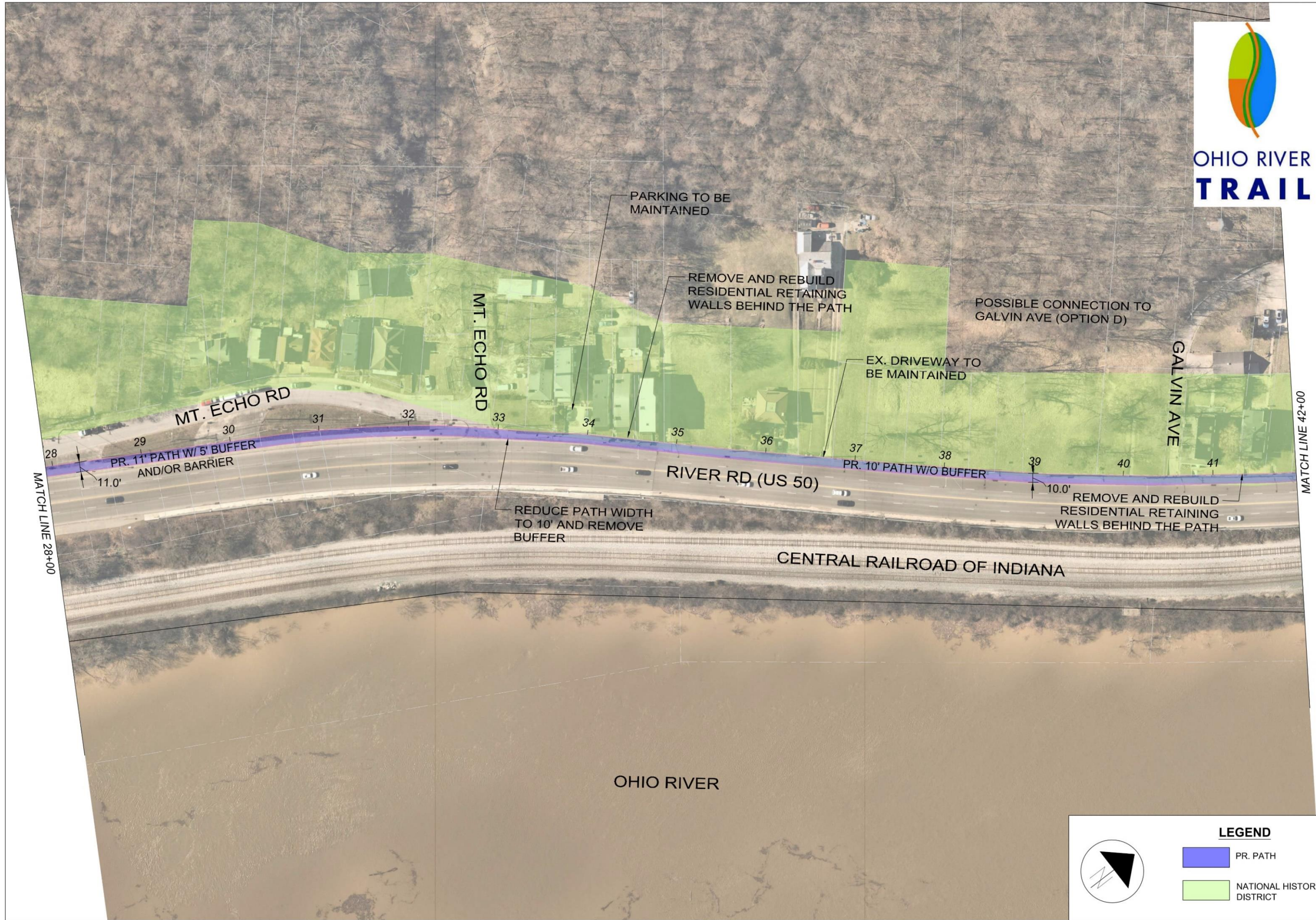
Consultant
TEC Engineering, Inc.
TEC Engineering, Inc.
7288 Centre Point Blvd.
Dublin, OH 43017

ACC No. C

LEGEND

- PR. PATH
- NATIONAL HISTORIC DISTRICT





Department of
Transportation
and Engineering
City of Cincinnati
801 Plum Street
Cincinnati, Ohio 45202

OHIO RIVER TRAIL

OPTION C - NORTH SIDE OF US 50
28+00 TO 42+00

Drawn by	Designed by	Checked by	Reviewed by
Date	Date	Date	Date

Consultant

 TEC Engineering, Inc.
 2200 Central Expressway
 Dayton, OH 45424

ACC No. C

LEGEND

- PR. PATH
- NATIONAL HISTORIC DISTRICT





Department of
Transportation
and Engineering
City of Cincinnati
City Hall Street
Cincinnati, Ohio 45202

OHIO RIVER TRAIL

OPTION C - NORTH SIDE OF US 50
STA. 42+00 TO 56+00

Drawn by	Designed by	Checked by	Reviewed by
Date	Date	Date	Date

Consultant
TEC Engineering, Inc.
1700 Winton Road B.
Troy, Ohio 45326
www.tecinc.com

ACC No. _____



LEGEND

- PR. PATH
- NATIONAL HISTORIC DISTRICT



OHIO RIVER

